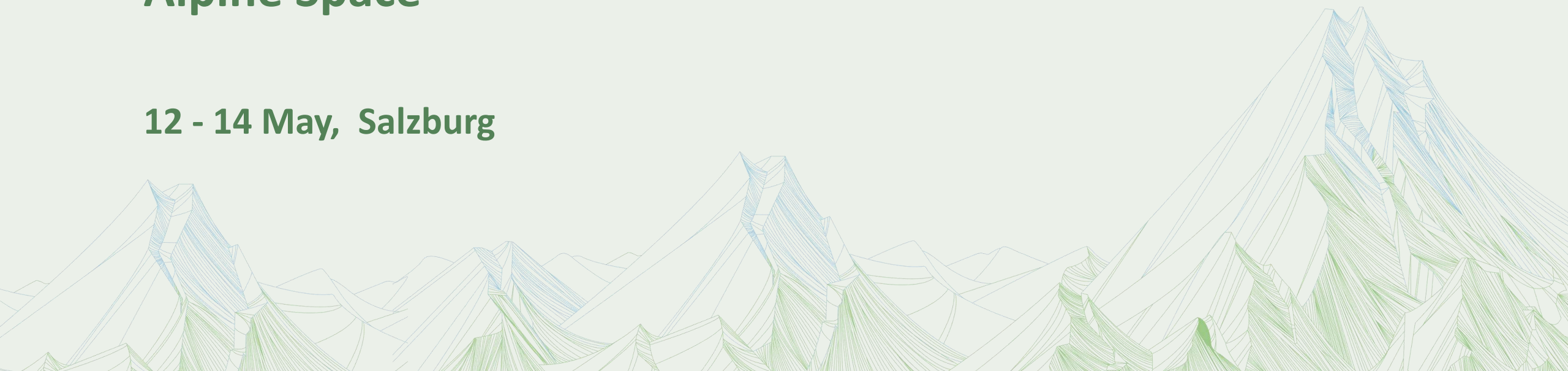


Cooperation, Legacy and Change: 25 Years of Interreg Alpine Space

12 - 14 May, Salzburg



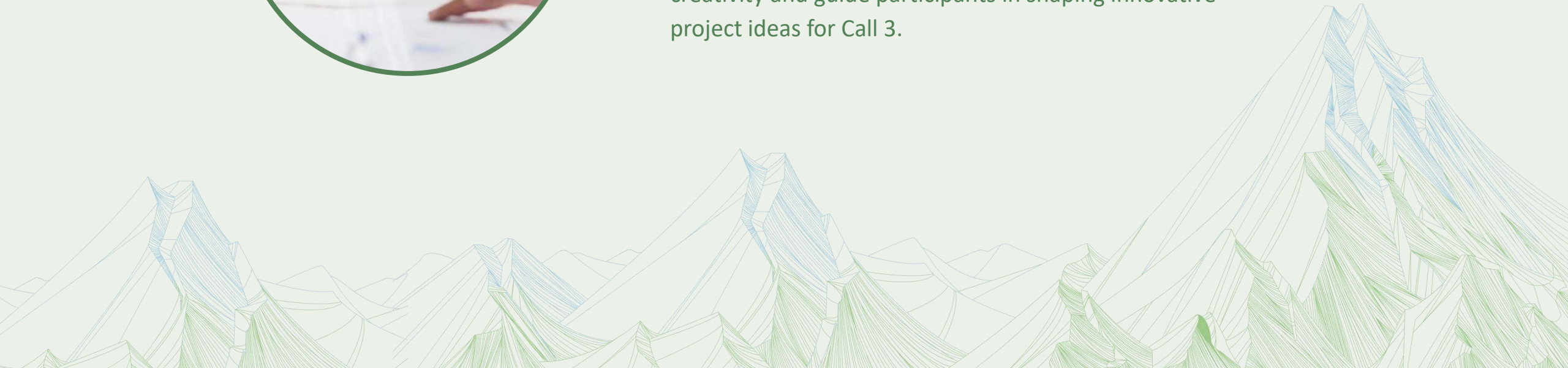
Workshops 14:00 - 17:00

in two sessions



IDEA LAB: MAKING YOUR PROJECT IDEA A REALITY

The foundation of a successful project starts long before a proposal is submitted. This interactive session will foster creativity and guide participants in shaping innovative project ideas for Call 3.



Workshops 14:00 - 17:00

in two sessions



Today's Menu

Appetizer

Welcome to the Alpine Space Idea lab

Christina Bauer (Head of the Managing Authority) and Thomas Fleury (Head of the Joint Secretariat)

Main course

Call 3 Classic explained

Matteo Decostanzi (Project officer)

Understanding the project intervention logic

Aleš Kegl (Project officer)

Exercise: How to design a Project, from Idea to Logic

Adina Schmid (Project officer)

Dessert

Final remarks and participant Q&A

Supported by: Corinna Wallner, Roberto De Marco, Lucie Greffier, Martina Bach



Third call for classic projects

1 Climate resilient and green Alpine region

Promoting climate change adaptation and disaster risk prevention, and resilience, taking into account eco-system based approaches

Enhancing protection and preservation of nature, biodiversity and green infrastructure, including urban areas, and reducing all forms of pollution.

2 Carbon neutral and resource sensitive Alpine region

Promoting energy efficiency and reducing greenhouse gas emissions

Promoting the transition to a circular and resource efficient economy

3 Innovation and digitalisation supporting a green Alpine region

Developing and enhancing research and innovation capacities and the uptake of advanced technologies

Reaping the benefits of digitalisation for citizens, companies, research organisations and public authorities

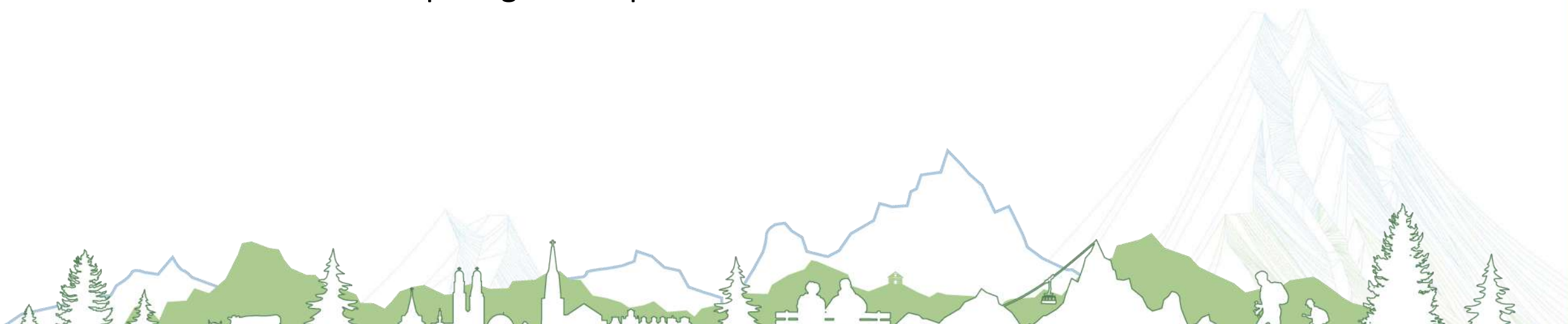
4 Cooperatively managed and developed Alpine region

Enhance institutional capacity of public authorities and stakeholders to implement macro-regional strategies and sea-basin strategies, as well as other territorial strategies

Specific objective 1.2

Thematic focus

- Biodiversity restoration and ecological connectivity
- Nature-Based Solutions (NbS) + horizontal integration in public policy
- Green and Blue Infrastructure (GBI) in different areas
- Natural and cultural heritage valorisation to safeguard landscapes and reduce fragmentation
- Consequences of permafrost thawing and glacier retreat + adaptation of territories in post-glacial Alps



Specific objective 2.2

Thematic focus

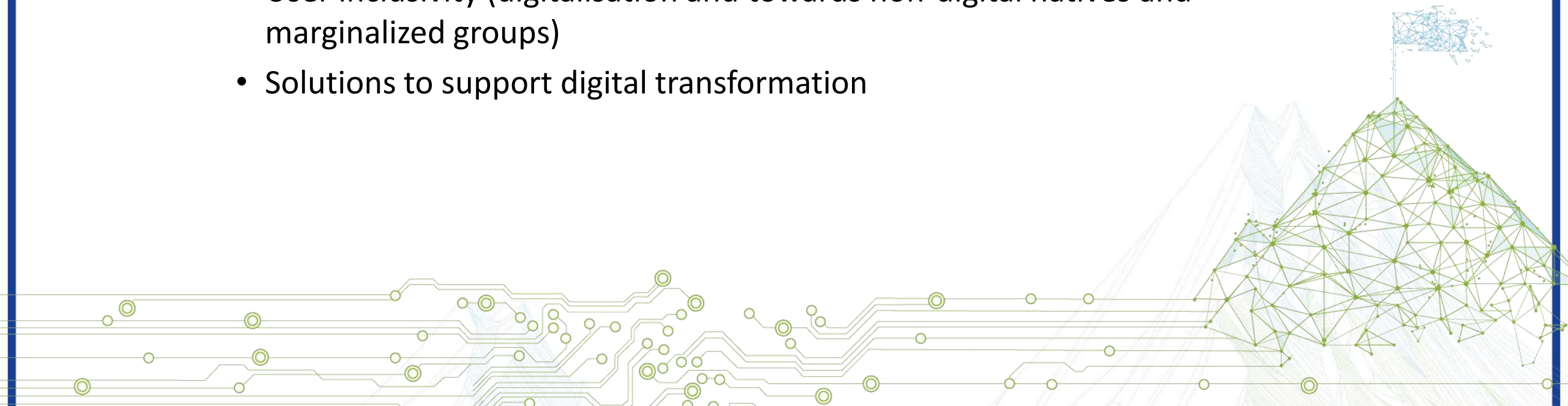
- Testing consumer engagement and behavioural change for a circular economy transition
- Balanced development for synergetic territorial transformation while countering polarisation
- Stakeholder integration and consolidation of circular economic clusters



Specific objective 3.2

Thematic focus

- Developing digital solutions (e.g. education, public administration and renewable energy sector)
- Solutions for cybersecurity, data monitoring and harmonized data collection across borders
- User inclusivity (digitalisation and towards non-digital natives and marginalized groups)
- Solutions to support digital transformation



Our expectation for classic call 3

- Apply the recommended **approaches**
- Address the **policy cycle**
- Engage and contribute to **EUSALP** and other EU or Alpine-wide policies
- Consistent **communication effort**

Advices for a quality project

- Clear and direct **contribution** to one of the **thematic focuses** listed in the ToR
- **Implementation oriented** -> developing and testing concrete solutions
- **Durability** and **transferability** -> uptake and long term use of outputs
- Strong **transnational** character of the project
- Coherent partnership with necessary **competences**
- Clear **intervention logic**

What should be avoided?

- Mentioning a strategy or a previous project without adequately demonstrating the synergy
- Research project without clear applications
- Purely local, regional or cross-border (and not clearly transnational)
- Project whose main objective is the exchange of information

What should be avoided?

- Partnership too homogeneous or covering only a small part of the territory
- Activities which a partner could carry out without the project or of which it would be the sole beneficiary
- Lack of involvement of key actors in a theme or sector
- Results without clear vision of sustainable use
- Lack of a strategy to transfer results to permanent structures

ASSESSMENT CRITERIA STEP 1*

Strategic criteria (100 points)

Project relevance (40 points)

Any significant contribution to a focus topic of ToR?

How well is a need for the project justified?

To what extent will the project contribute to the achievement of programme's objectives and indicators?

How does the project build on existing practices?

Partnership relevance (30 points)

To what extent is the partnership composition relevant for the proposed project?

Intervention logic (15 points)

To what extent is the project intervention logic plausible?

Cooperation character (15 points)

What added value does the cooperation bring?

*According to the Programme manual, Annex IIa

Main Course Intervention logic



What is intervention logic?

Intervention
logic and
outputs



Your contribution to
the programme



Project overview



What is intervention logic?

The intervention logic

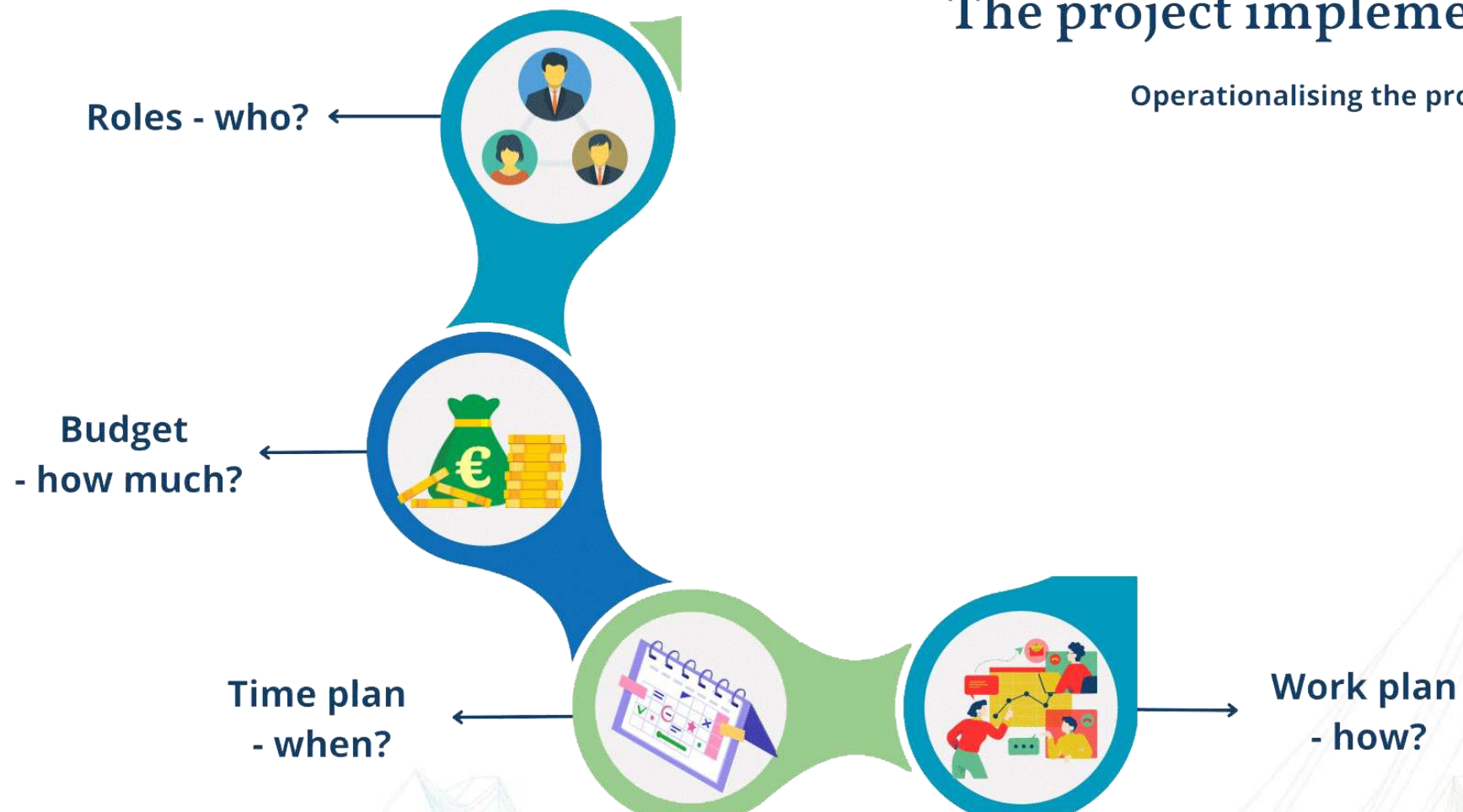
Must be linked to the programme's intervention logic.



What is intervention logic?

The project implementation

Operationalising the project



Intervention logic

Overall objective

Intervention logic



Intervention logic and results

RESULTS

Two types of result indicator for your result/s:

- **Solutions** taken up or upscaled by organisations
- **Other**

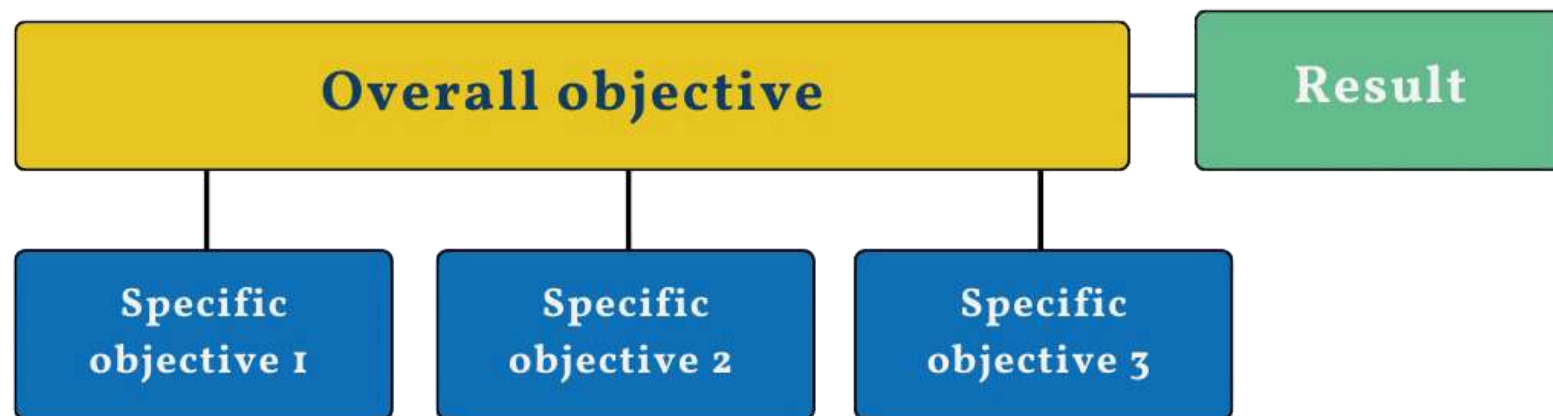
→ **uptake of an output by organisations** ultimately leading to a change on the ground

⚠ target value

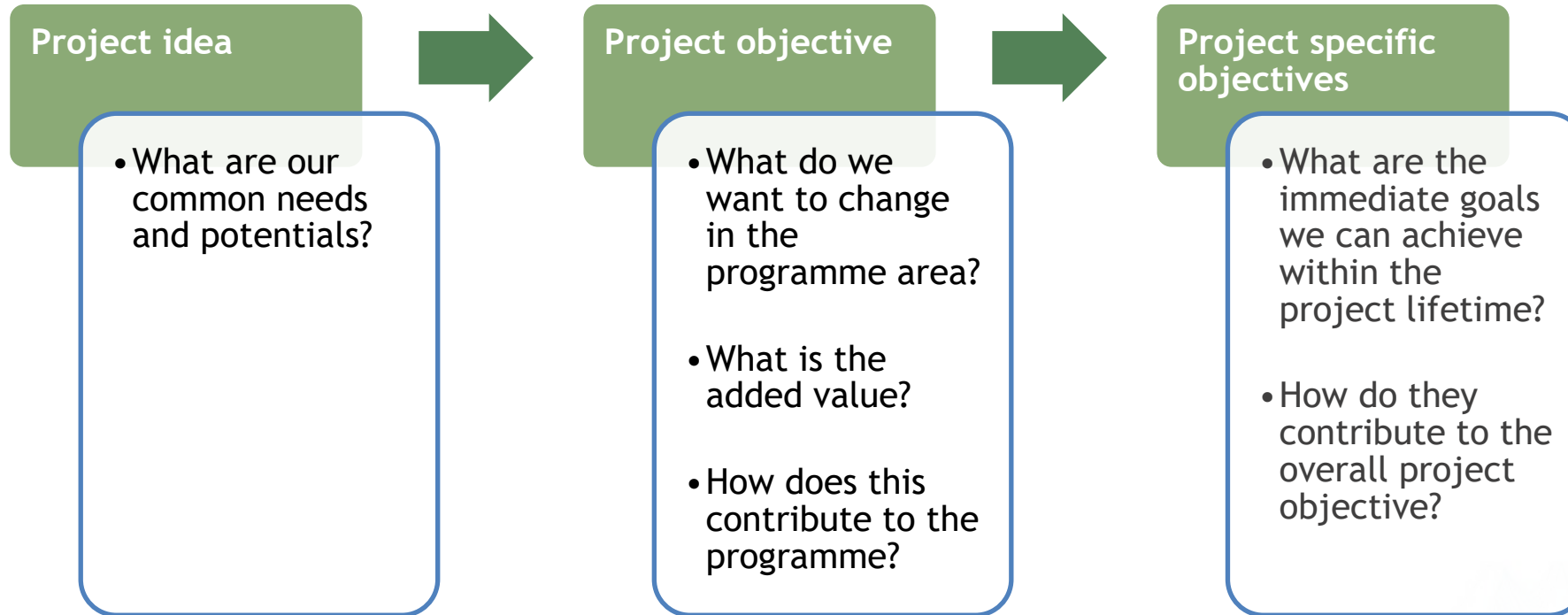
output uptaken by organisations 😊

number of organisations taking up the output 😞 (but it can be mentioned in your description 😊)

Intervention logic



Intervention logic and outputs

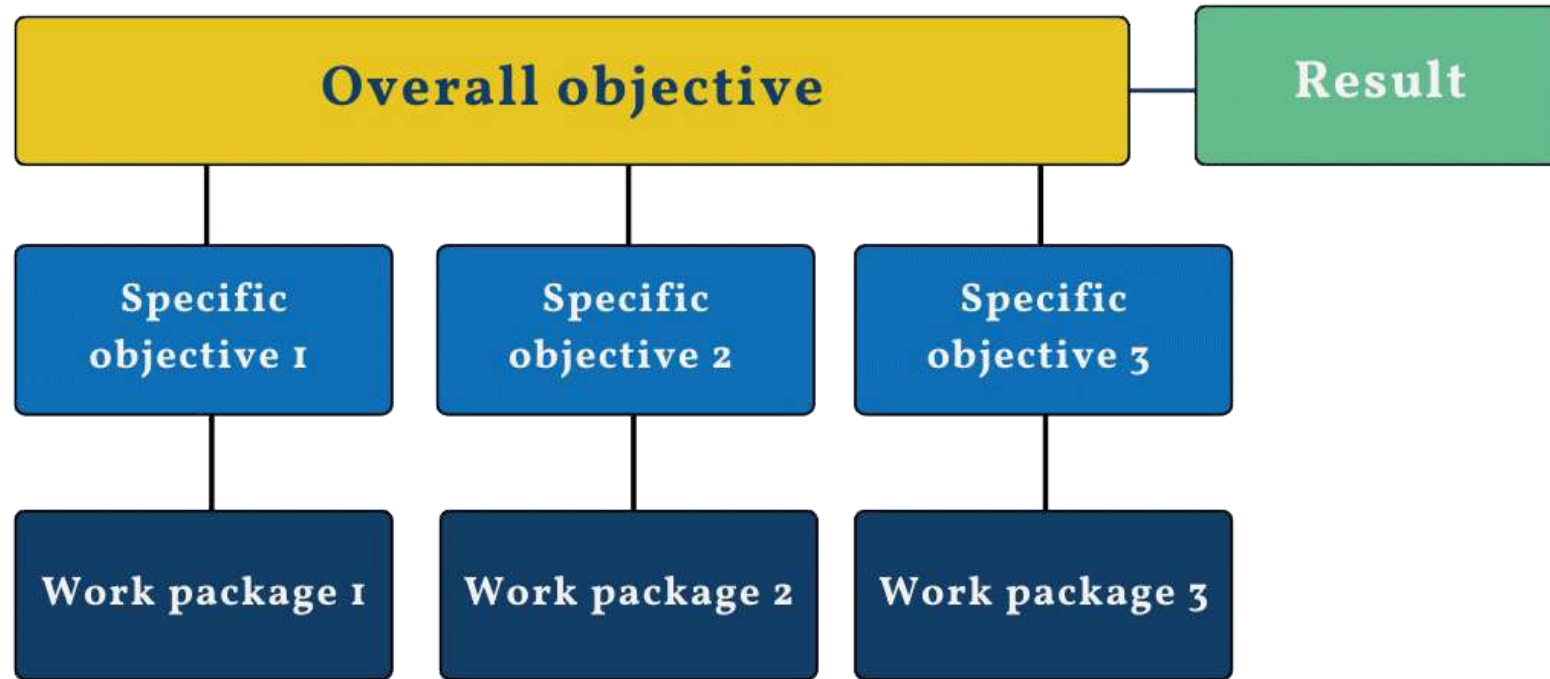


Intervention logic and outputs

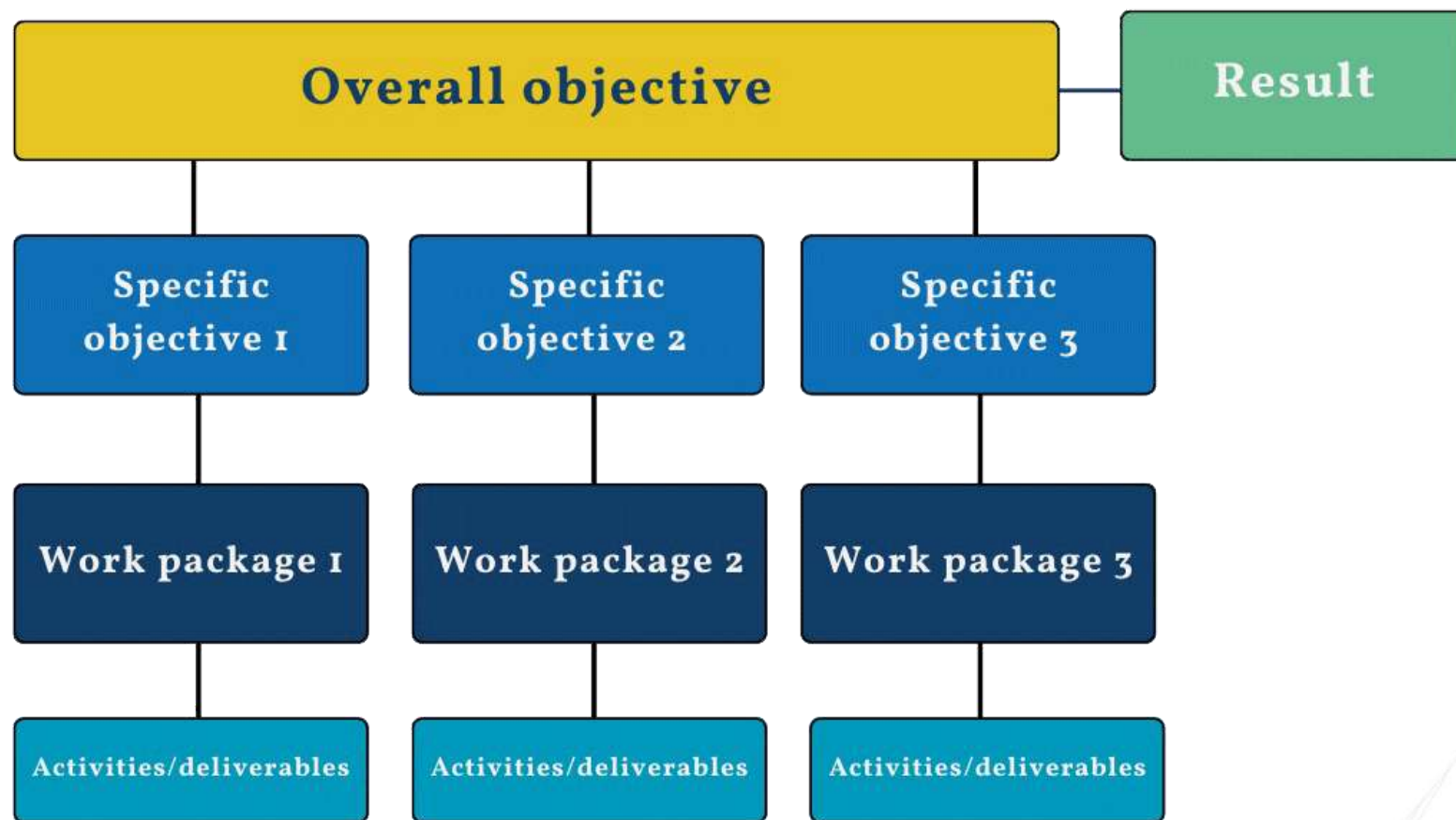
OBJECTIVE AND SPECIFIC OBJECTIVES OF THE PROJECT

- Choose the right programme specific objective in your priority
- Precise and explicit objective
- Transnationality as key element

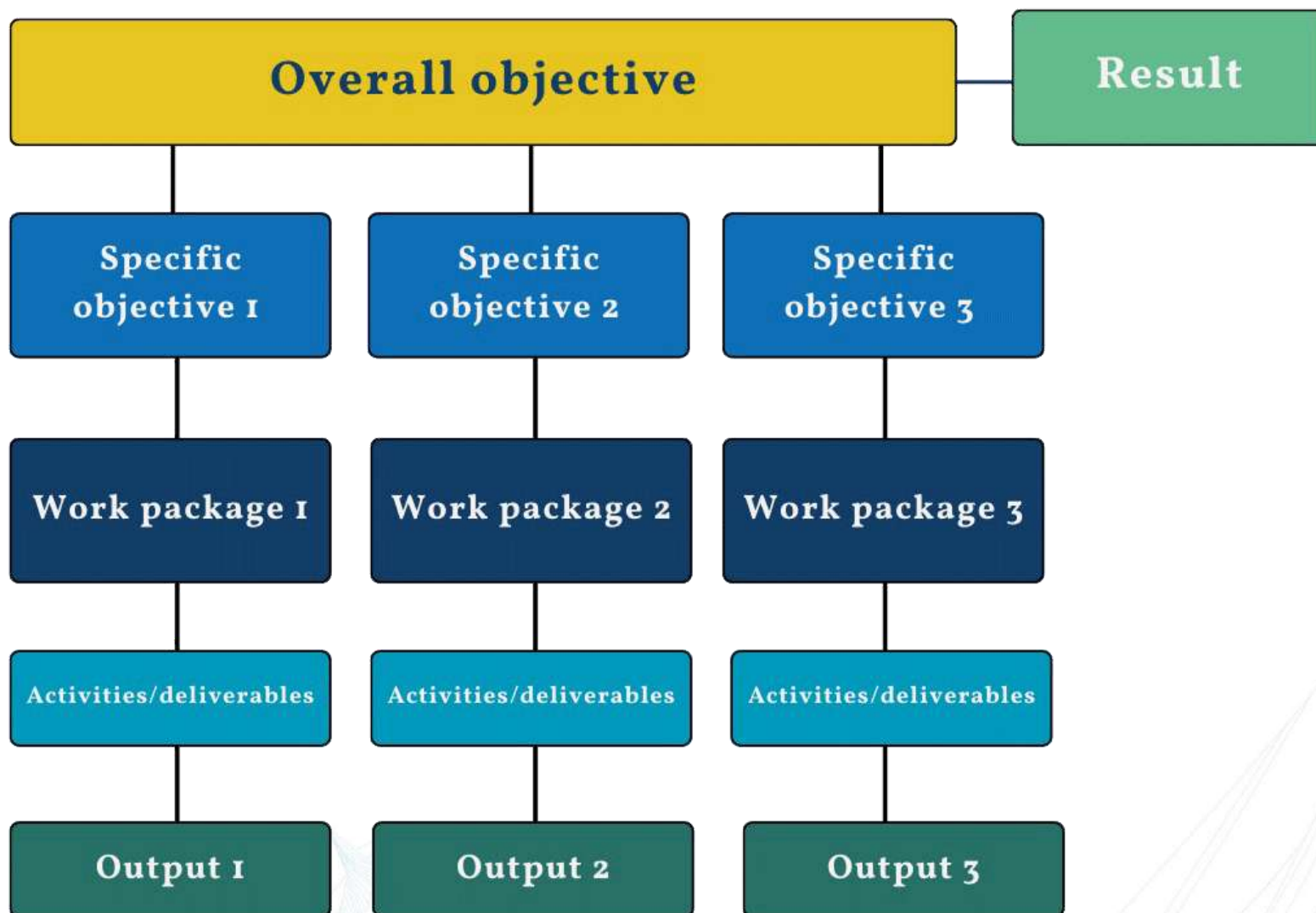
Intervention logic



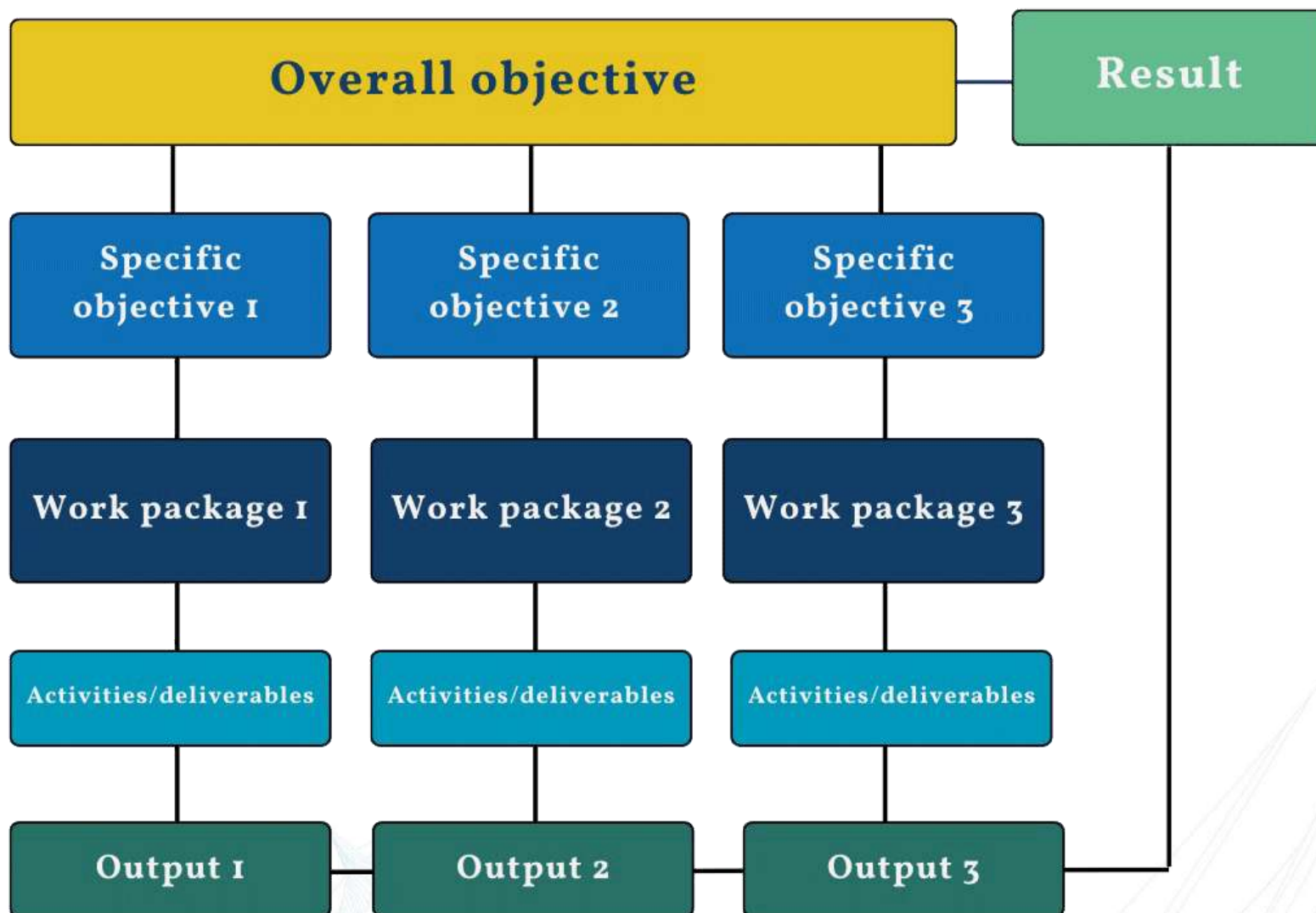
Intervention logic



Intervention logic



Intervention logic



Intervention logic and outputs

OUTPUTS

Three types of output indicator for your output/s:

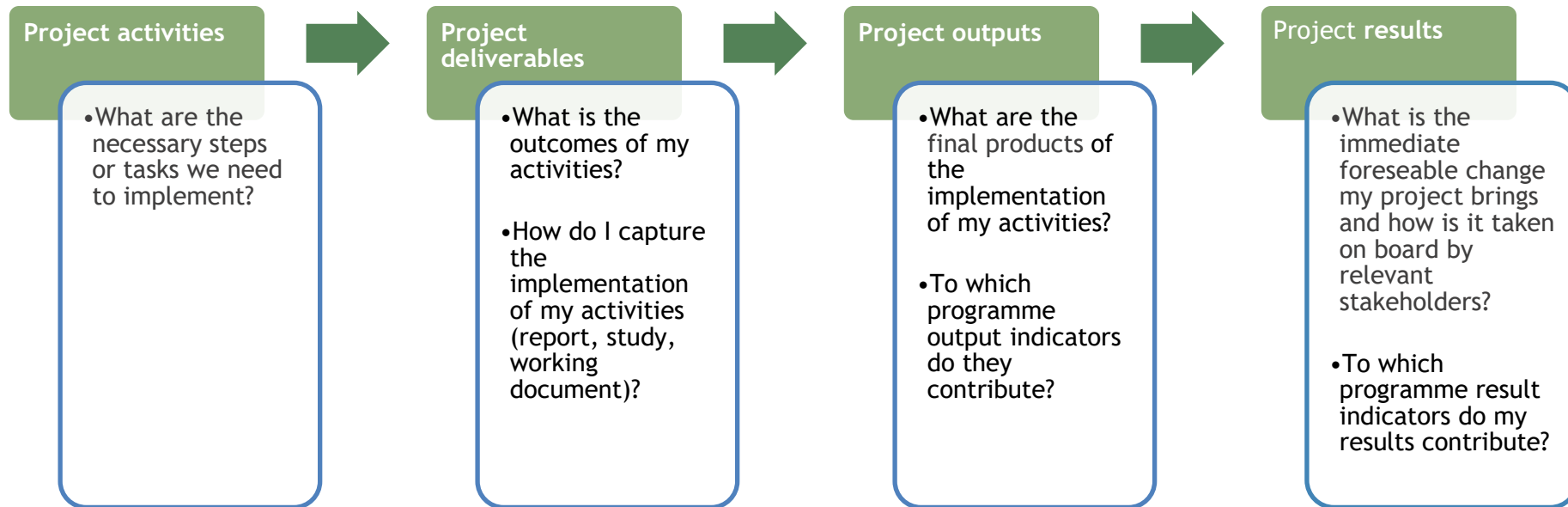
- **Pilot actions** developed jointly and implemented in projects
- Jointly developed **solutions**
- **Other**



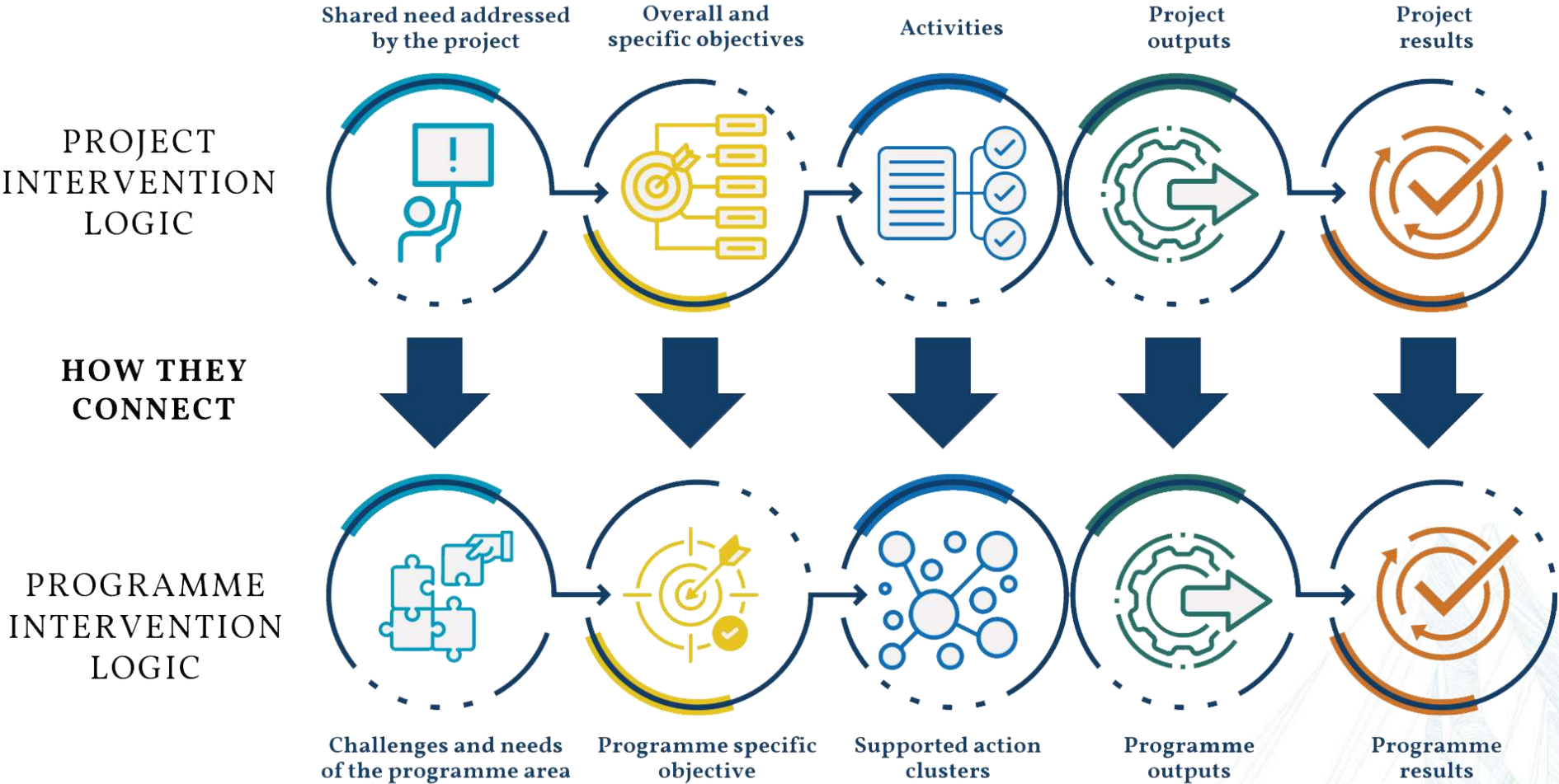
Intervention logic and outputs

Pilot actions	Jointly developed solutions	Other
<p>→ concept/format of pilot actions</p> <p><u>concept</u> jointly developed by the project</p> <p>used for implementing your pilot activities</p> <p>⚠ <u>target value</u> concept 😊 each single pilot activity implemented 😞</p>	<p>→ implementation-oriented character</p> <p><u>practical solutions</u> / <u>products</u> jointly developed by the project</p> <p>e.g. tool-boxes, models, instruments, action plans, concepts/methods, roadmaps, processes...</p>	<p>→ strategic character</p> <p>no “pilot action” and no “solution”</p> <p>e.g. strategies, recommendations, policy briefs, toolboxes, training modules etc.</p>

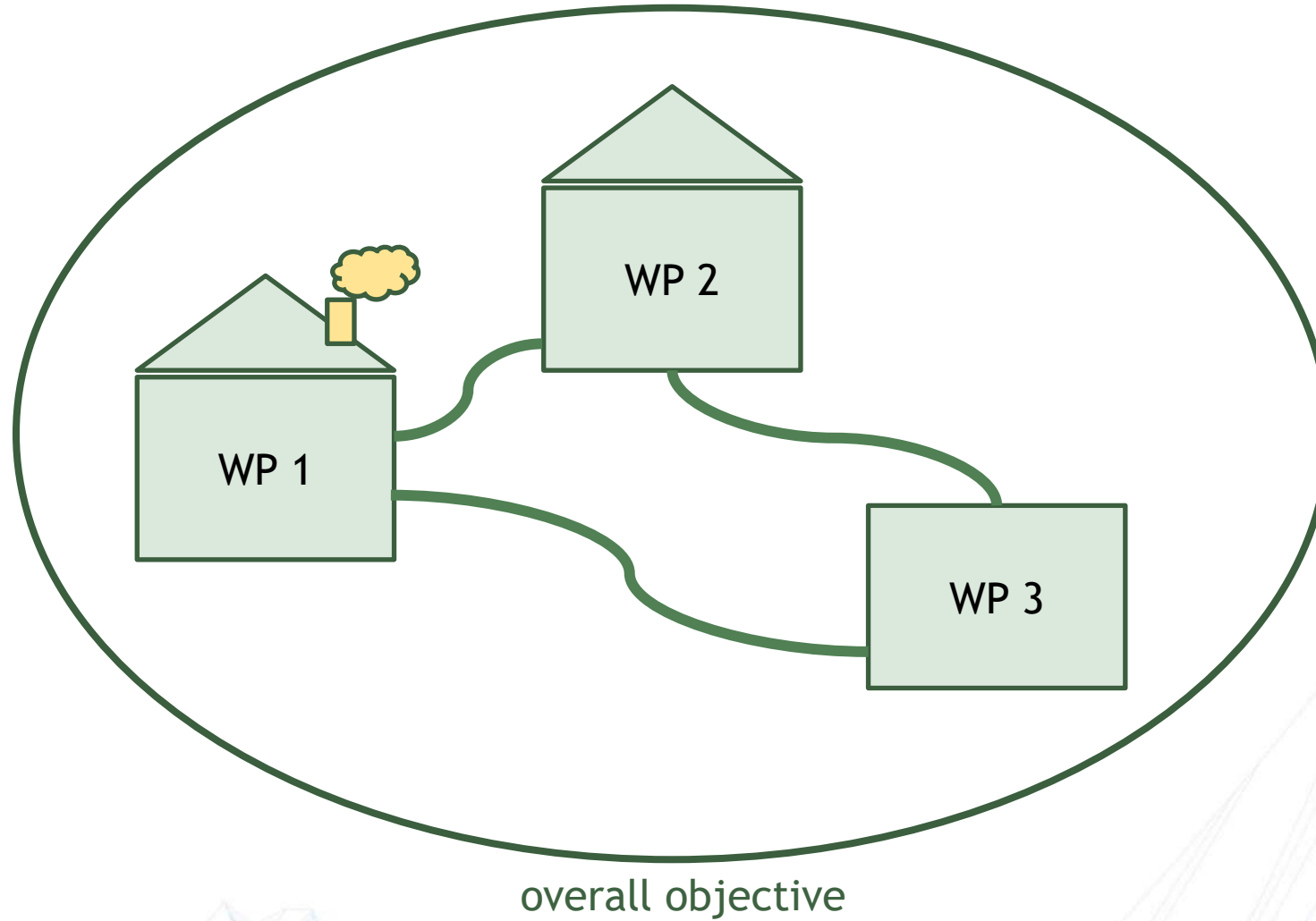
Intervention logic and outputs



Linking the project to the programme intervention logic

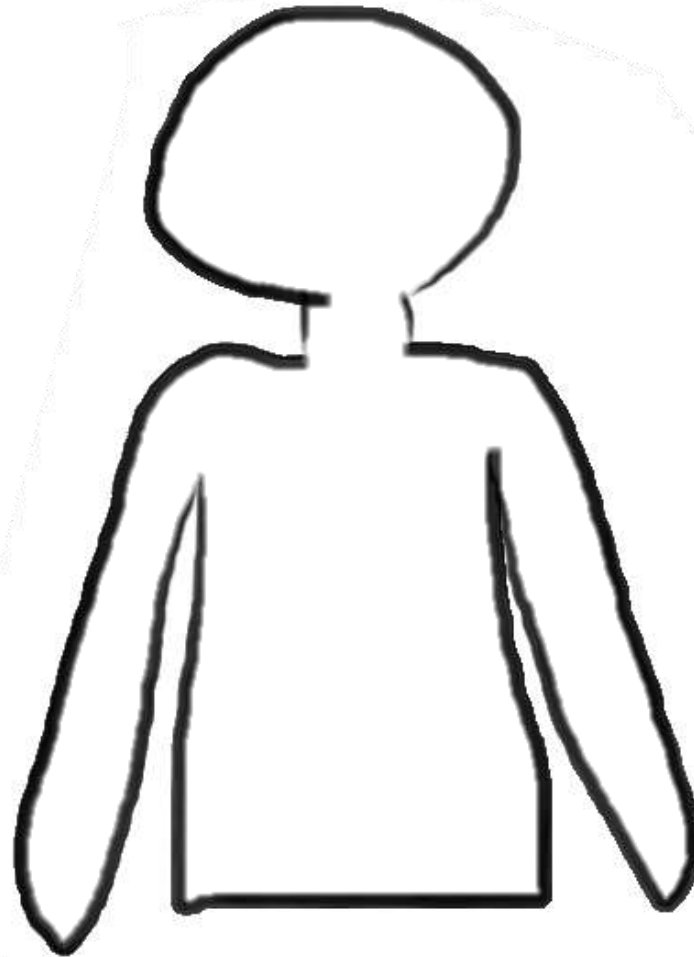


In a nutshell...



Let's talk about communication

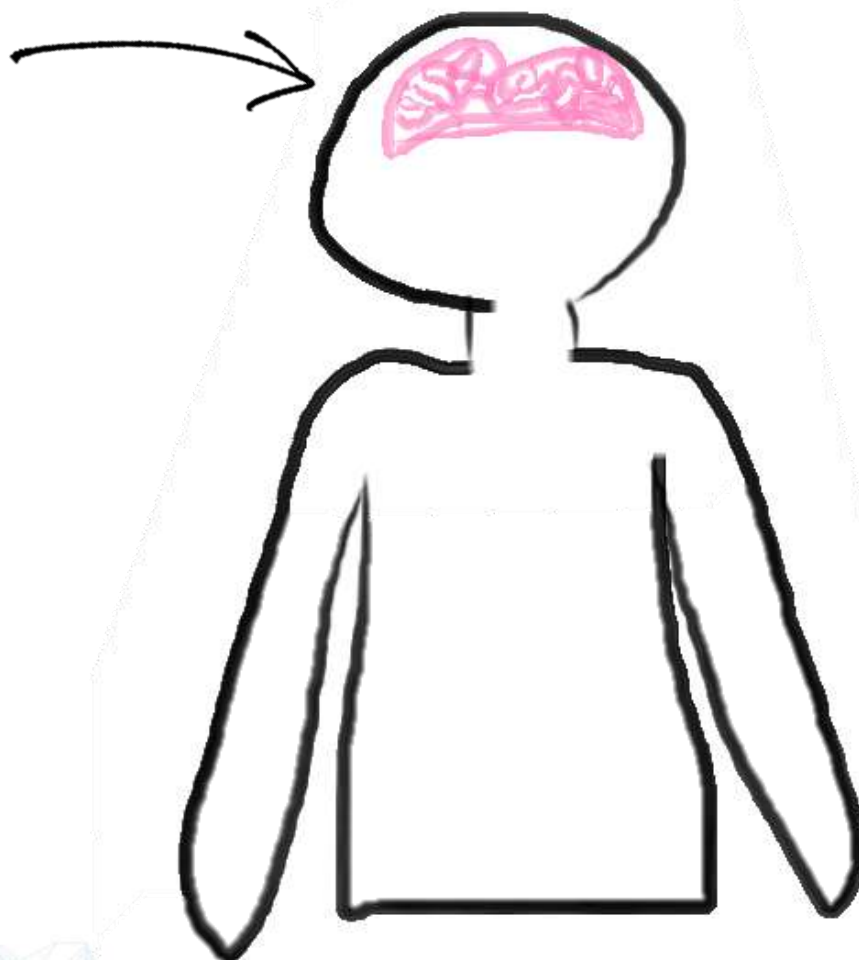
PROJECT



Let's talk about communication

intervention logic

= the logic behind the
project

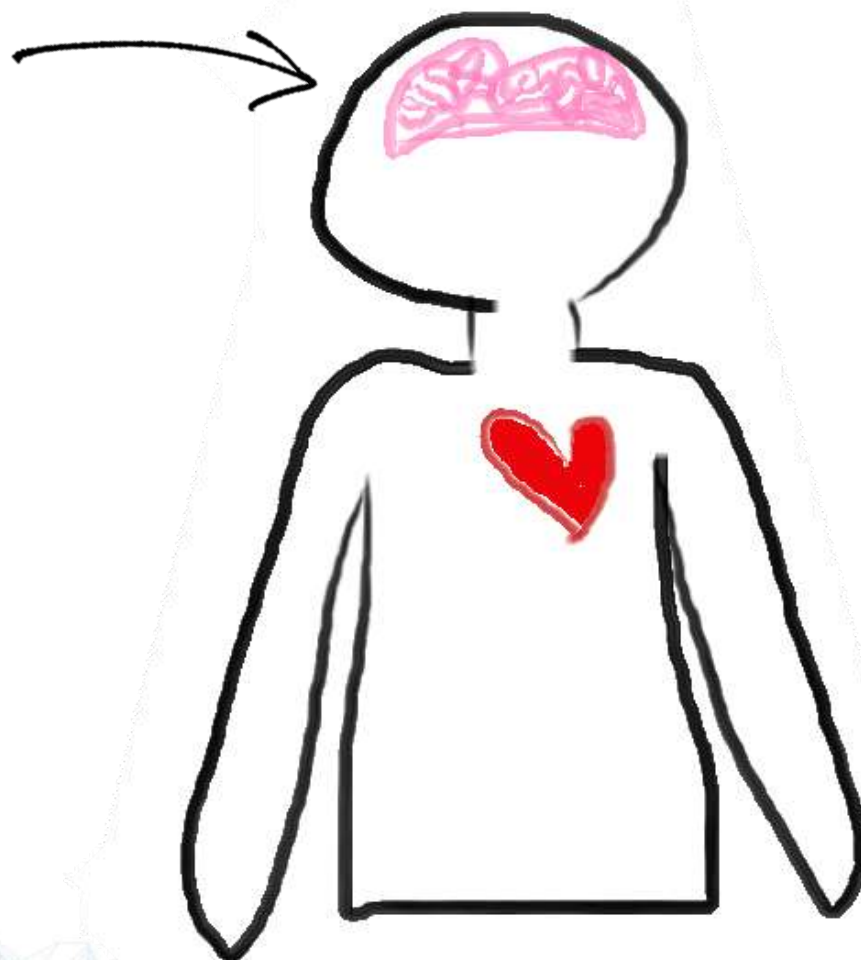


PROJECT

Let's talk about communication

intervention logic

= the logic behind the project

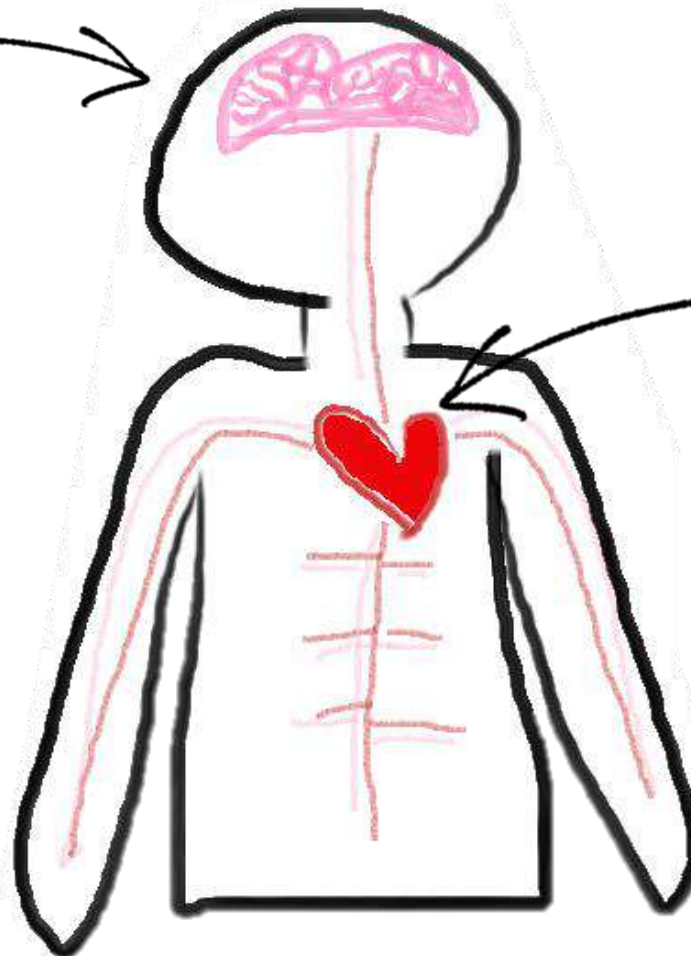
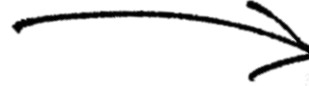


PROJECT

Let's talk about communication

intervention logic

= the logic behind the project



PROJECT

communication

- continuous beating
- supplies everything
- connects everything

PARTNER SEARCH PLATFORM



CONNECT & COLLABORATE

The Interreg Alpine Space partner search platform is the perfect place to find partners to support your project idea. Join the network, connect with others and let great things happen.



DEVELOP YOUR IDEAS & FUND YOUR PROJECT

Present your project idea, engage in discussions to refine it, and access resources to prepare for funding applications, leveraging the support of your network to produce valuable results for the region.

NETWORK & STAY INFORMED

Stay in touch to inspire each other, and build a strong community of people with smart ideas, fostering inspiration and community-building for regional development. And receive important information as soon as it is out!



Join us: <https://connect.alpine-space.eu>

Main Course EXERCISE


How to design a
project, from
idea to logic?





EXERCISE - the setup

Project Scenario: Reducing Pollution in Nature Parks

 There is a Alpine nature park that is an important natural and tourism area.

 The park suffers from pollution and biodiversity degradation, due to over-tourism.

 The same problem also affects other nature parks in different Alpine countries, requiring a joint solution.

 Your organisation is collaborating with others from the Alpine Space to secure Interreg funding.

 **QUESTION 1 :** Which are the relevant target groups of the project?

EXERCISE - WASTELESS

Project WASTELESS - Waste Awareness & Sustainable Technologies for Environmental Landscape Enhancement in Sensitive Sites

Project Overall Objective

To reduce environmental pollution in four nature parks, by improving the waste management systems, raising public awareness, and improving cooperation between public authorities.

💡 **QUESTION 2** : Which Priority/SO of the programme would it be relevant to address this common Alpine challenge?

EXERCISE - the specific objectives



QUESTION 3: Formulate the specific objective of WP2

Objectives	Work packages title	Enhance public awareness and engagement
	Work package number	2
	Project specific objective	To increase awareness and active participation of visitors and local communities in sustainable waste management.

EXERCISE - the output indicators and target values

💡 **QUESTION 4:** Read the proposed specific objectives and outputs of WP1 & WP3 and identify the correct output indicators and target values

10 minutes

Output indicators

Pilot actions developed jointly and implemented in projects

Jointly developed solutions

Other (An output which is neither a pilot action nor a jointly developed solution)

EXERCISE - the output indicators and target values

Outputs	Output	Programme output indicator	Measure-ment unit	Output title	Output description	Output indicator target value
	O 1.1	Pilot actions developed jointly and implemented in projects	Pilot action	Testing the digital management system in protected areas	The tool is tested in 4 protected areas	1
	O 1.2	Jointly developed solutions	Solution	Sustainable waste management system	An innovative digital management tool to track waste types and volumes in real time	1

EXERCISE - the output indicators and target values

Outputs	Output	Programme output indicator	Measure-ment unit	Output title	Output description	Output indicator target value
	O 3.1	Other	N/A	Collaborative governance frameworks established	Formal agreement signed between municipalities, park authorities and relevant stakeholders.	1
	O 3.2	Other	N/A	Alpine waste management guidelines	Harmonised guidelines based on the experience gained in all WPs.	1

EXERCISE - the project results

💡 **BONUS QUESTION:** With the given information, try to formulate one project result and identify the correct indicator and target value

EXERCISE - the project results

Result Nr.	Programme result indicator	Measurement unit	Result description	Result indicator baseline	Result indicator target value
RI 1	Solutions taken up or up-scaled by organisations	Solution	Improved waste management in 4 nature parks leading to a cleaner environment, through the adoption of the sustainable waste management system	0	1
RI 2	Other	N/A	Increased public awareness and engagement in sustainable waste practices	0	1
RI 3	Other	N/A	Stronger cooperation ensuring long-term environmental protection	0	1

EXERCISE - the transnational cooperation

💡 **BONUS QUESTION:** Given the information, discuss what added value does the cooperation at transnational level bring in this example?

- Shared environmental challenges needs a coordinated, transnational response
- Knowledge and expertise exchange from different partners
- Tested scalability and potential for transferability of the solution (O1.2), through different pilots in diverse pilot areas
- Proposed outputs bring benefits to both involved target groups and territories
- Harmonised guidelines need transnational collaboration
-



Aleš Kegl

Project Officer

Phone +43 662 8042 3721

Mobile : +43 664 8284 126

E-Mail : ales.kegl@alpine-space.eu

www.alpine-space.eu



Matteo Decostanzi

Project Officer

Phone: +43 662 8042 3708

Mobile: +43 664 8565 671

E-Mail : matteo.decostanzi@alpine-space.eu

www.alpine-space.eu



Adina Schmid

Project Officer

Phone: +43 662 8042 3816

Mobile: +43 664 8605 636

E-Mail: adina.schmid@alpine-space.eu

www.alpine-space.eu

THANK YOU DANKE MERCI GRAZIE HVALA