

Interreg



Co-funded by
the European Union

Alpine Space

How to prepare a quality application form

Salzburg | Austria | 2.12.2025

Aleš Kegl and Matteo Decostanzi

21/27



What's the logic in the intervention logic?



What's the logic in the intervention logic?



The intervention logic

Must be linked to the programme's intervention logic.

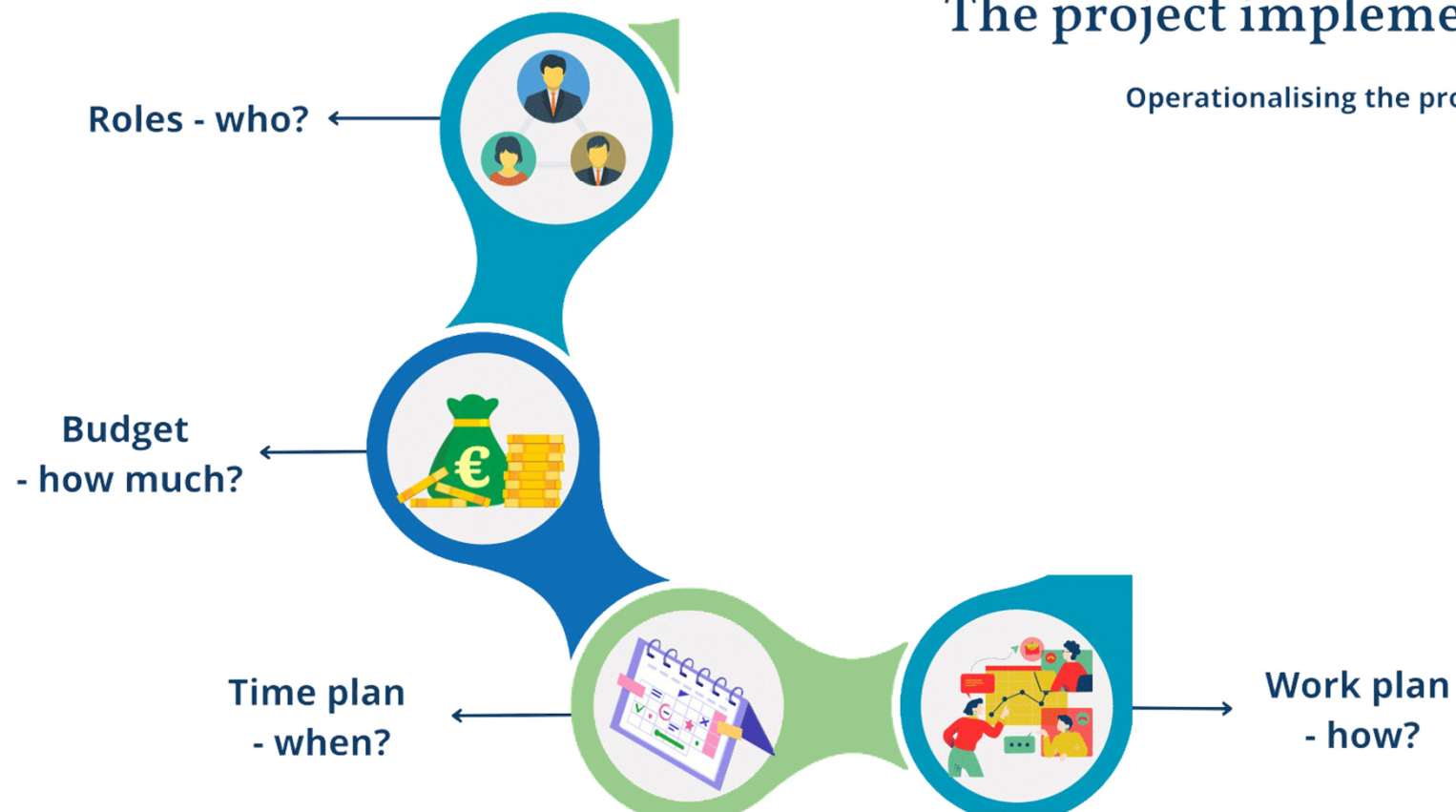


What's the logic in the intervention logic?



The project implementation

Operationalising the project



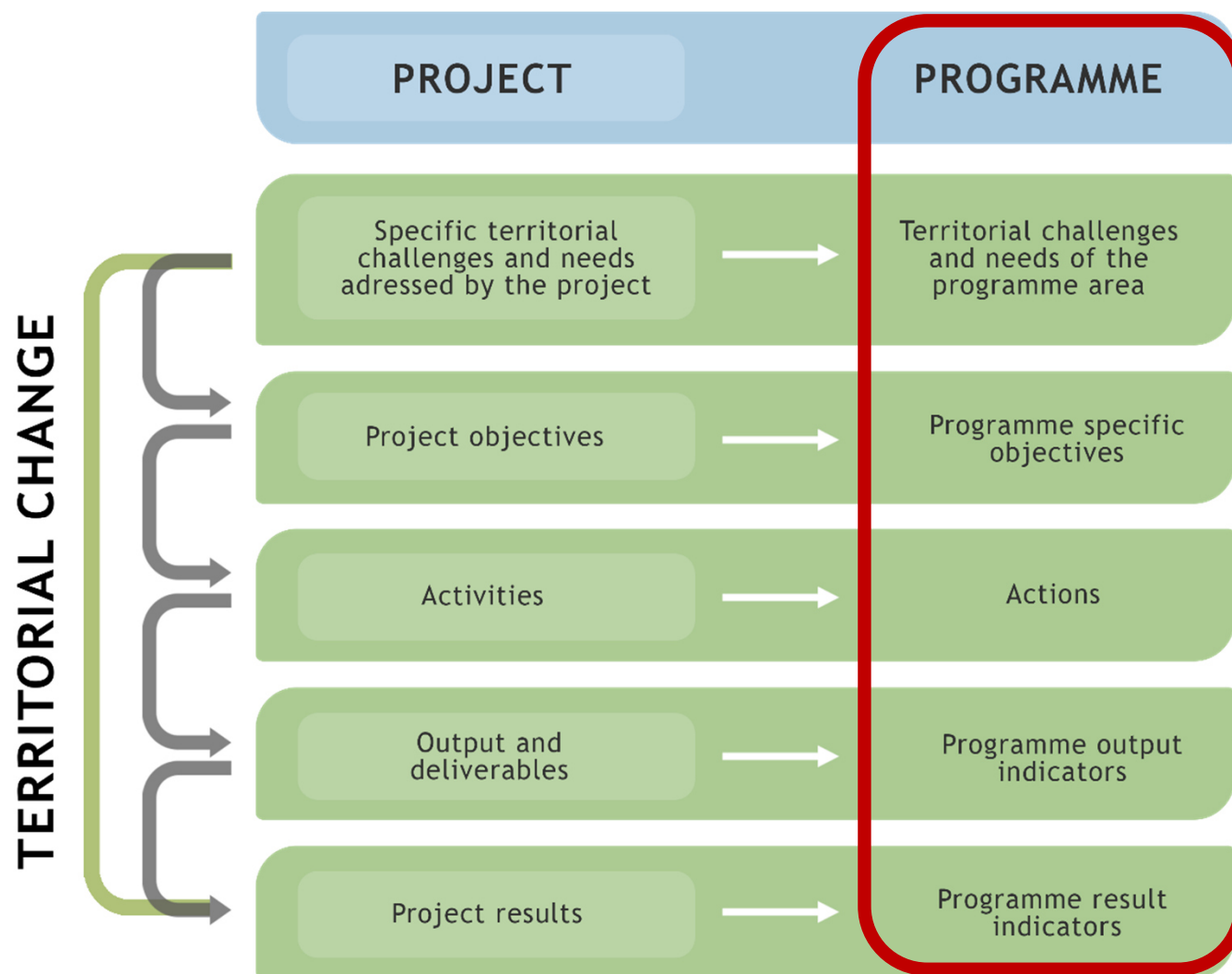
Interreg



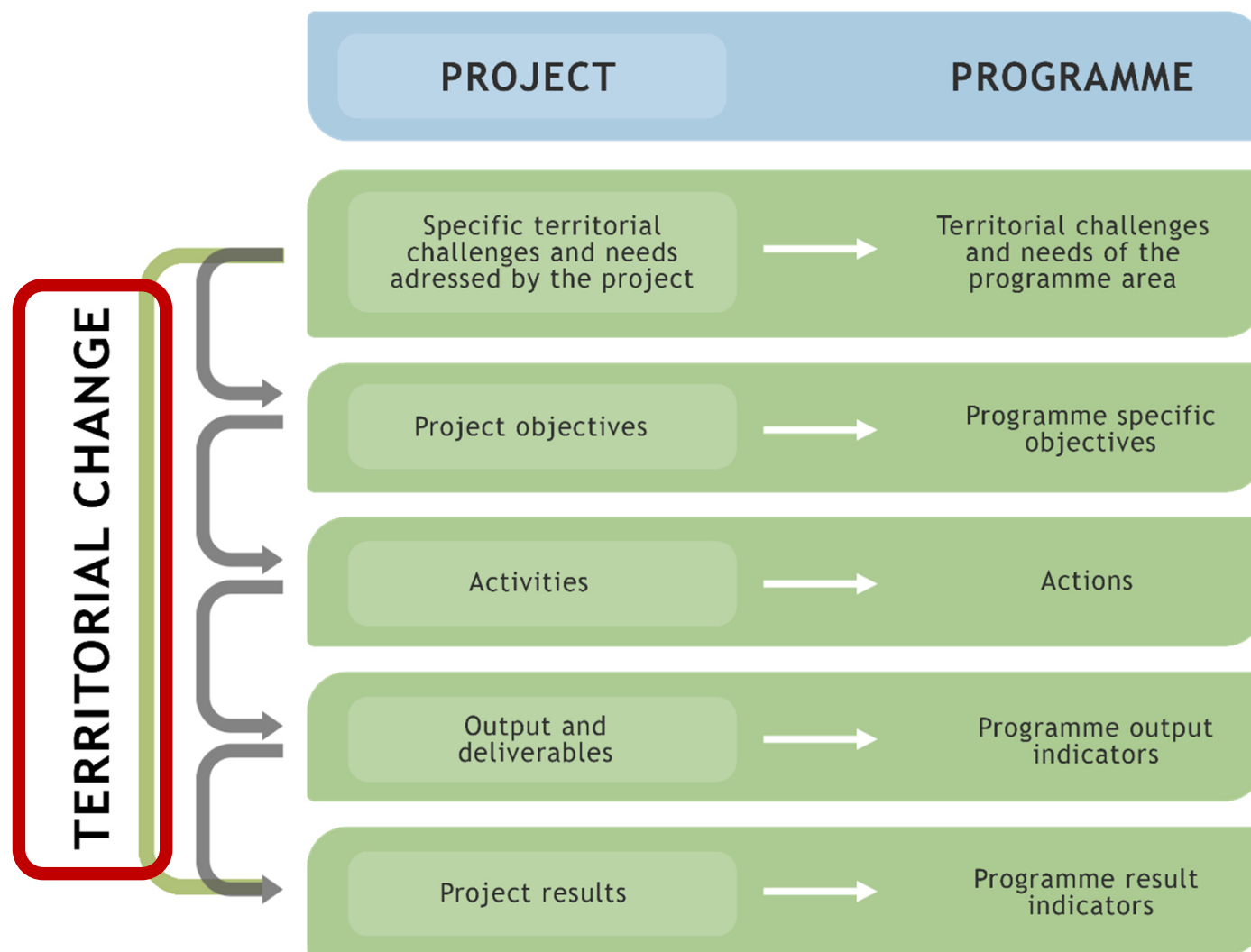
Co-funded by
the European Union

Alpine Space

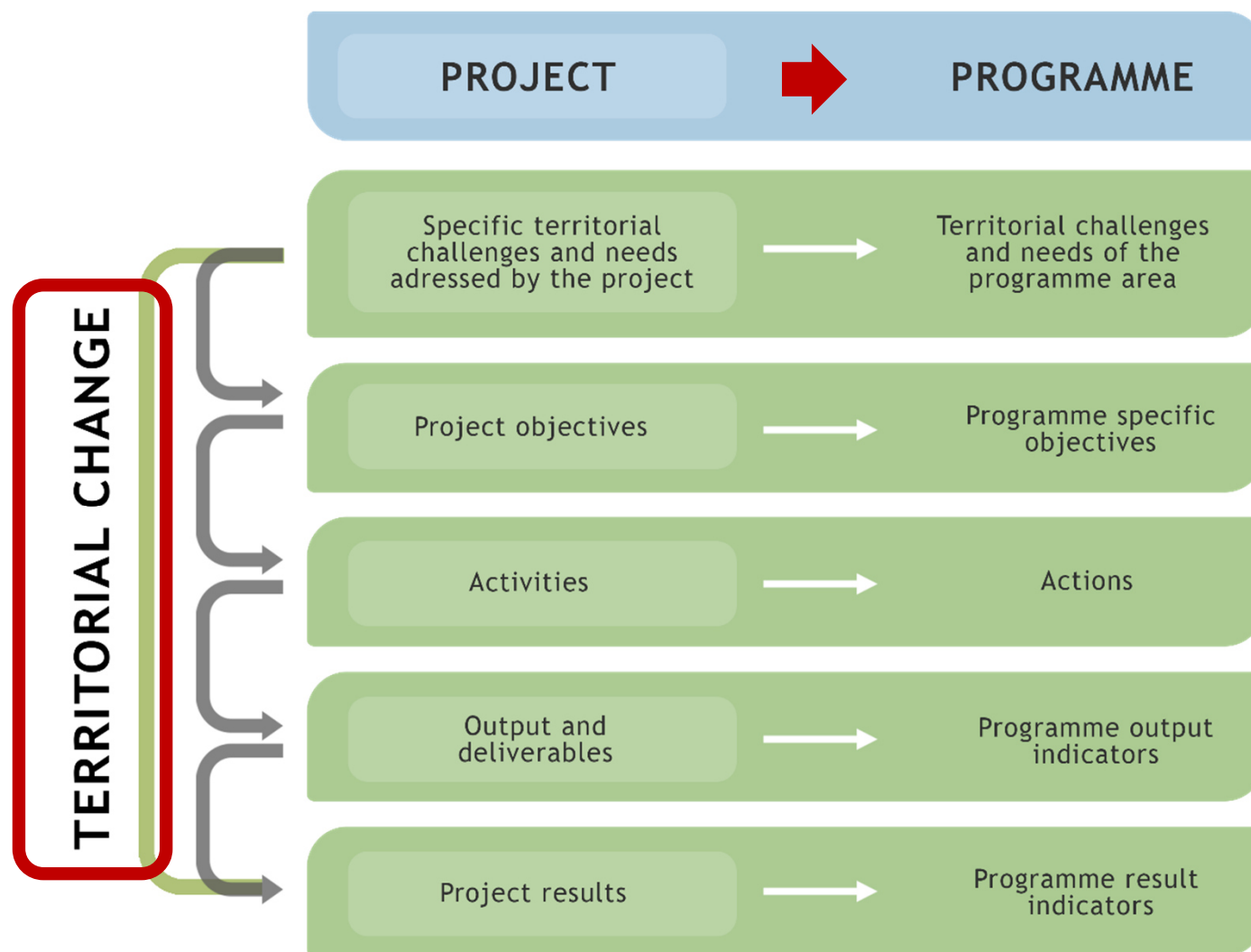
What's the logic in the intervention logic?



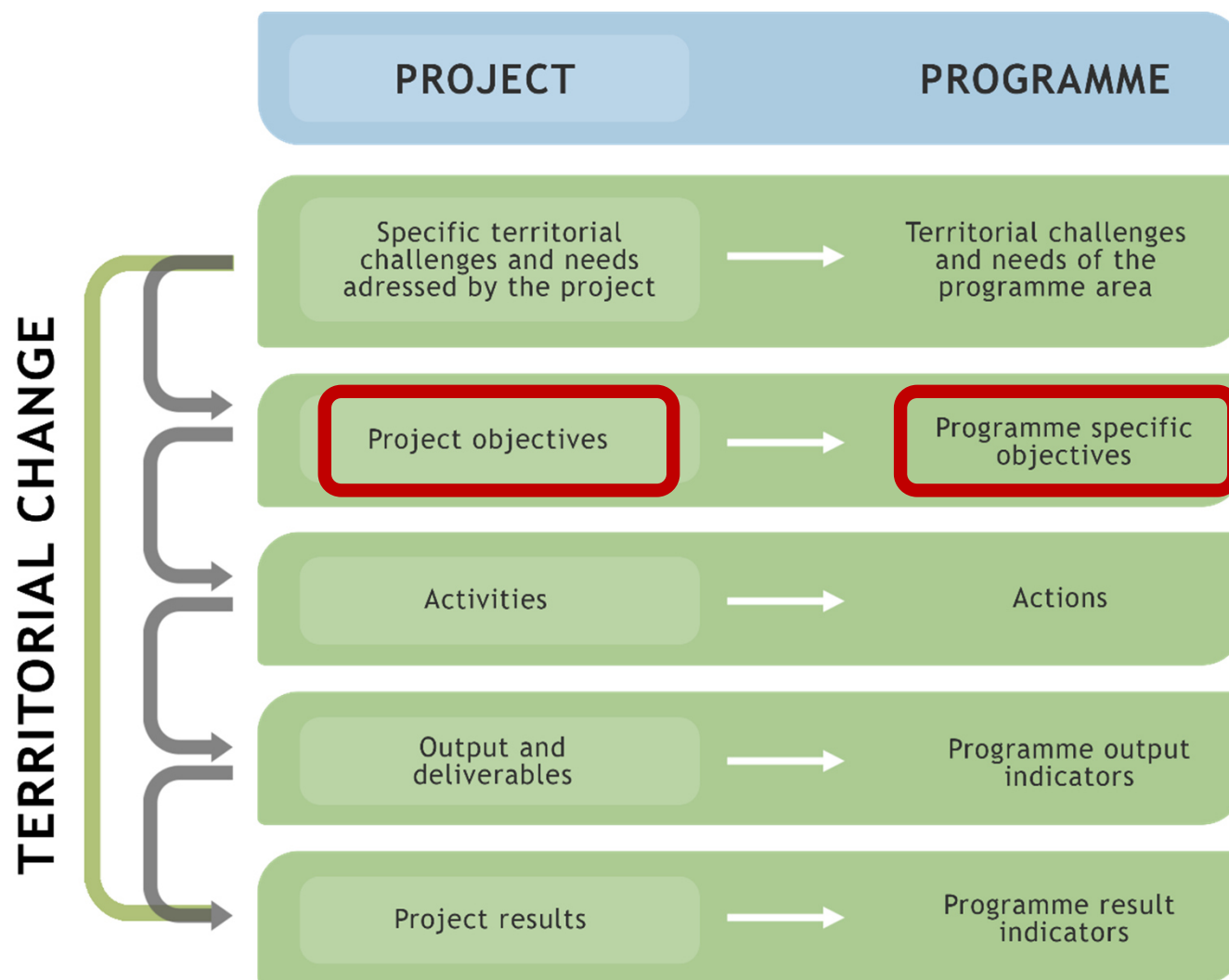
What's the logic in the intervention logic?



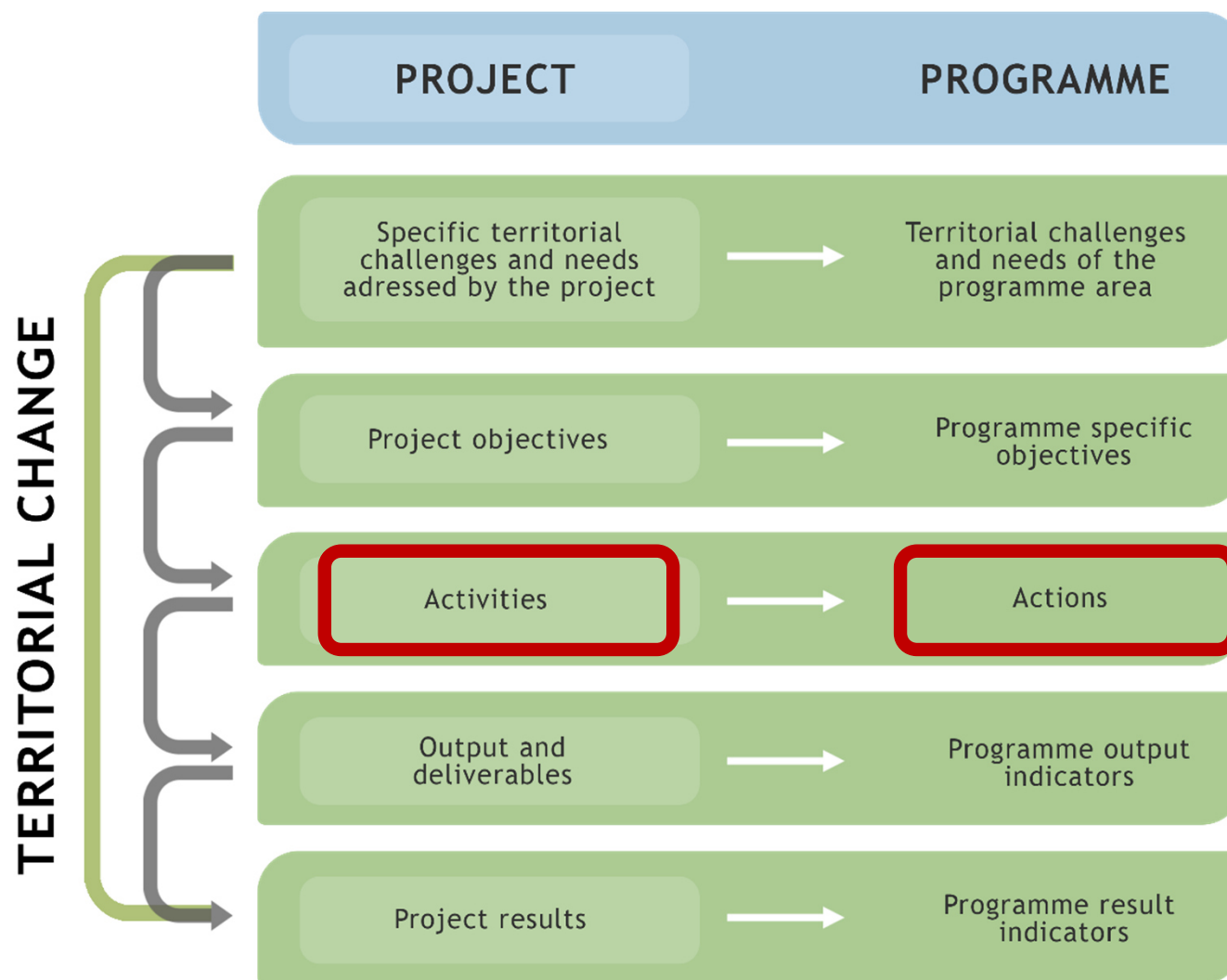
What's the logic in the intervention logic?



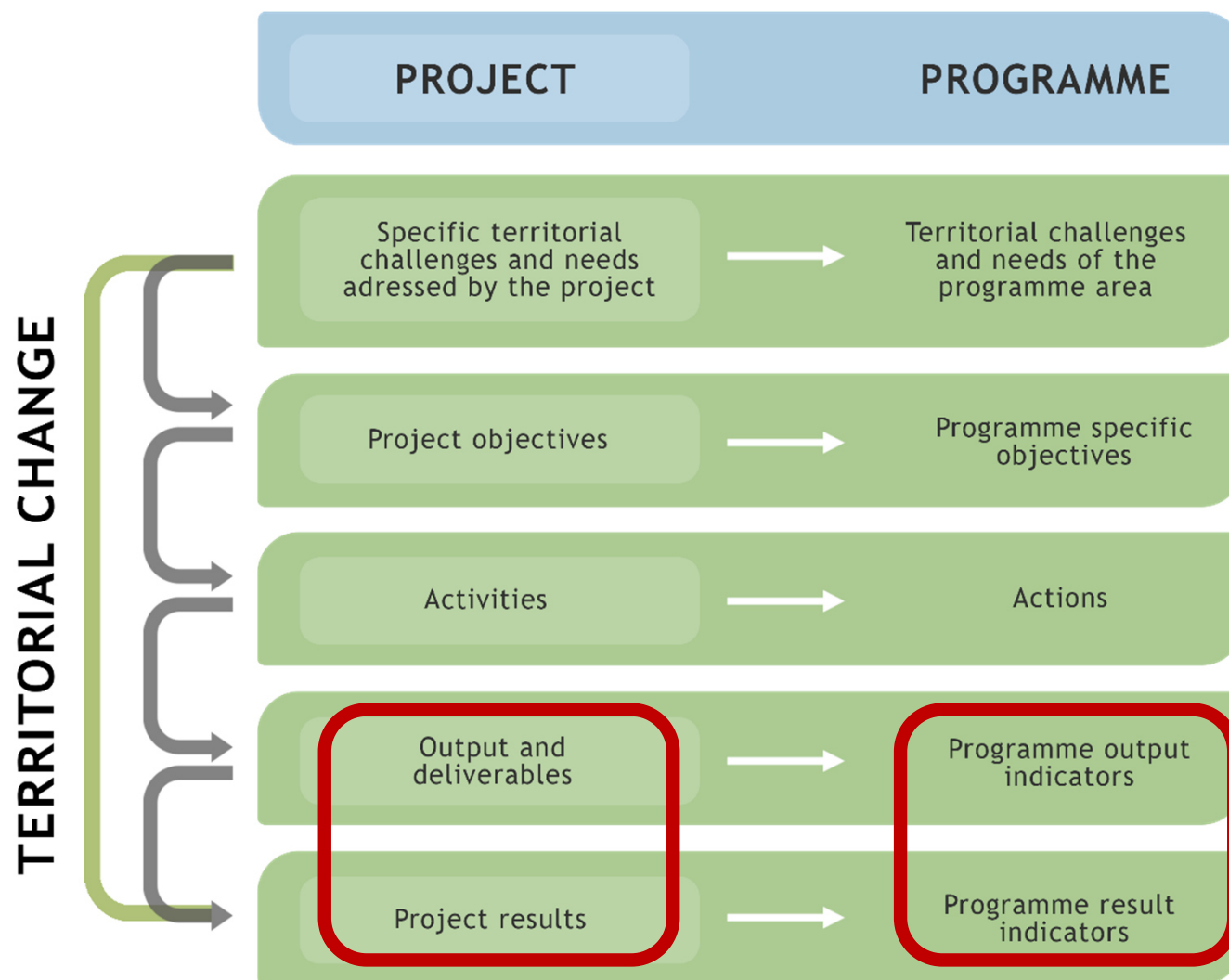
What's the logic in the intervention logic?



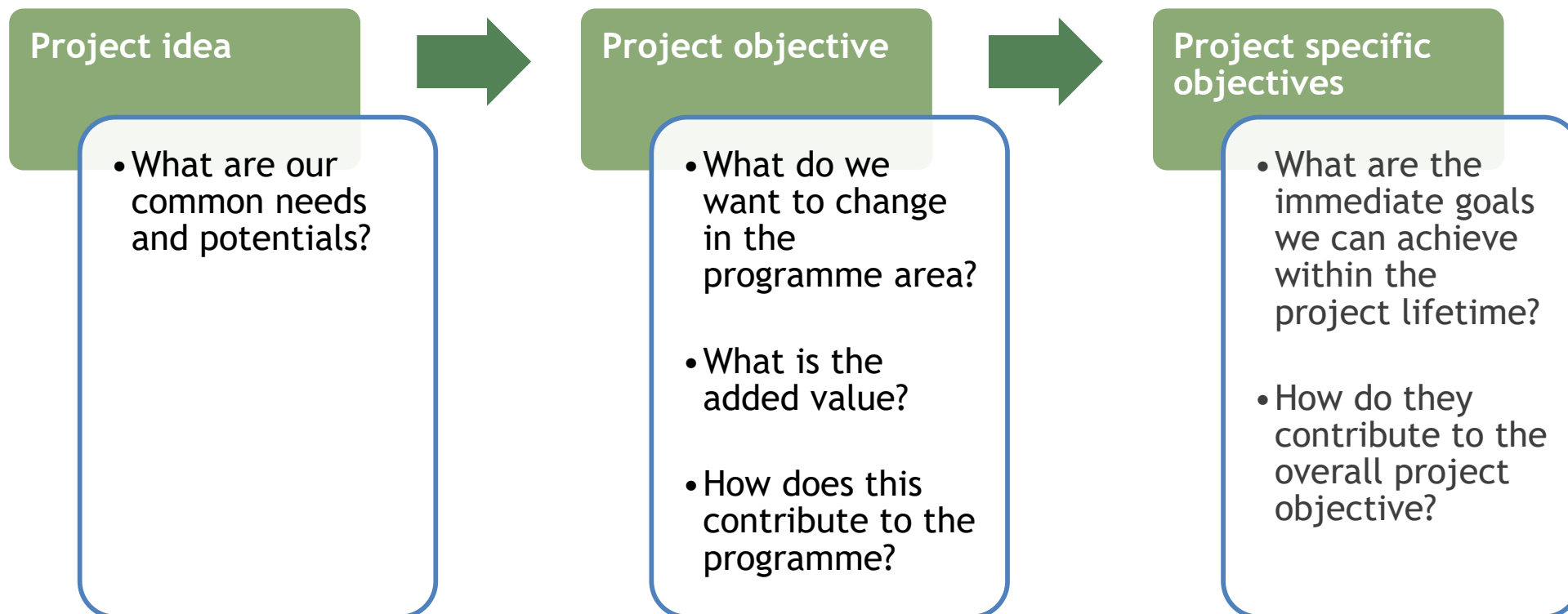
What's the logic in the intervention logic?



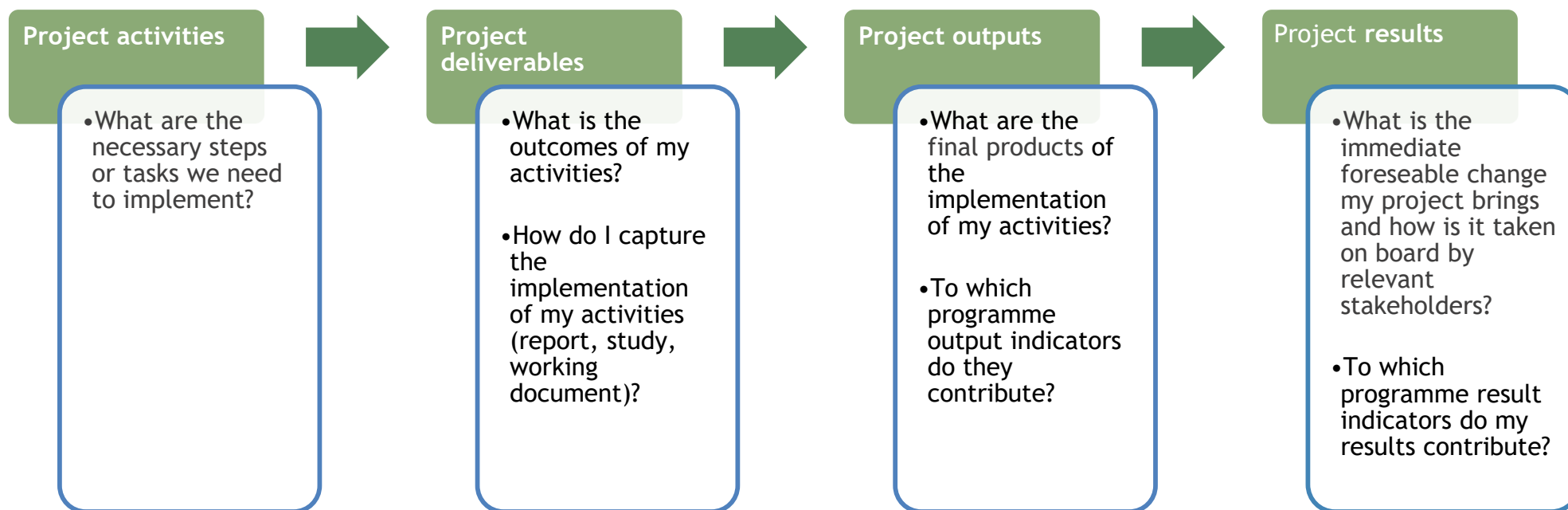
What's the logic in the intervention logic?



What's the logic in the intervention logic?



What's the logic in the intervention logic?



What's the logic in the intervention logic?



		PRIORITY 1		PRIORITY 2		PRIORITY 3		PRIORITY 4
INDICATOR		Climate Change SO iv	Biodiversity SO vii	Energy SO vi	Circular economy SO vi	R&I SO i	Digitization SOii	ISO 1
OUTPUT	RCO84 Pilots	●	●	●	●	●	●	X
	RCO116 Solutions	●	●	●	●	●	●	
	RCO118 Organisations							
RESULT	RCR104 Solutions	●	●	●	●	●	●	
	PSR1 Organisations							

What's the logic in the intervention logic?



Interreg
Alpine Space

Co-funded by
the European Union

DashboardApplicationsCallsProgrammeControllersPaymentsSystemEnglish?

Project overview

Application form

Project version
(current) V.1.0

A - Project identification

A - Project identification

B - Project partners

Partners overview

C - Project description

C.1 Project overall objective

C.2 Project relevance and context

C.3 Project partnership

C.4 Project work plan

WP1

C.5 Project Results

C.6 Project Time Plan

Application annexes

Check & Submit

Exports for AF (and other)

Project privileges

Jems
A harmonised tool
by Interact

Dashboard / Applications / ASP0500485 – TEST / Project work plan / WP1

Based on the planned activities to deliver the specific objective in this work package, please list below the outputs that will be delivered during the implementation. Select one programme output indicator per output. It is possible that one output does not contribute to one of the selected programme output indicator (for more information on the programme output indicators, the definition of these and the related target value please refer to the Interreg Programme). In that case, please choose "other" and precise.

It is not mandatory to have an output in each WP. Please consider that there should not be more than three outputs per WP.

Output 1.?

Output Title

Programme Output Indicator
OI 2.1.1: Pilot actions developed jointly and implemented in projects

Measurement Unit
pilot actions

Target Value
1,00

Output Description

+ Add Output

Discard changes Save changes

- Pilot actions are meant to test procedures, methodologies, tools, or the transfer of practices
- Target value is the number of methodologies or tools subject to piloting

What's the logic in the intervention logic?



Interreg Alpine Space Co-funded by the European Union

Dashboard Applications Calls Programme Controllers Payments System English

Project overview

Application form

Project version (current) V.1.0

A - Project identification

A - Project identification

B - Project partners

Partners overview

C - Project description

C.1 Project overall objective

C.2 Project relevance and context

C.3 Project partnership

C.4 Project work plan

WP1

C.5 Project Results

C.6 Project Time Plan

Application annexes

Check & Submit

Exports for AF (and other)

Project privileges

Jems A harmonised tool by Interact

Dashboard / Applications / ASP0500485 – TEST / Project work plan / WP1

Based on the planned activities to achieve the specific objective in this work package, please list below the outputs that will be delivered during the implementation. Select one programme output indicator per output. It is possible that one output does not contribute to one of the selected programme output indicator (for more information on the programme output indicators, the definition of these and the related target value please refer to the Interreg Programme). In that case, please choose "other" and precise.

It is not mandatory to have an output in each WP. Please consider that there should not be more than three outputs per WP.

Output 1.?

Output Title

Programme Output Indicator
OI 2.1.2: Jointly developed solutions

Measurement Unit
solutions

Target Value
1,00

Output Description

+ Add Output

Discard changes Save changes

- Jointly developed solutions are the outcome of pilot actions implemented by projects
- Toolbox, models, roadmaps, instruments
- Implementation-oriented character

What's the logic in the intervention logic?



Interreg
Alpine Space

Co-funded by
the European Union

DashboardApplicationsCallsProgrammeControllersPaymentsSystemEnglish?

Project overview

Application form

Project version
(current) V.1.0

A - Project identification

A - Project identification

B - Project partners

Partners overview

C - Project description

C.1 Project overall objective

C.2 Project relevance and context

C.3 Project partnership

C.4 Project work plan

WP1

C.5 Project Results

C.6 Project Time Plan

Application annexes

Check & Submit

Exports for AF (and other)

Project privileges

Jems
A harmonised tool
by Interact

Dashboard / Applications / ASP0500485 – TEST / Project work plan / WP1

Based on the planned activities to achieve the specific objective in this work package, please list below the outputs that will be delivered during the implementation. Select one programme output indicator per output. It is possible that one output does not contribute to one of the selected programme output indicator (for more information on the programme output indicators, the definition of these and the related target value please refer to the Interreg Programme). In that case, please choose "other" and precise.

It is not mandatory to have an output in each WP. Please consider that there should not be more than three outputs per WP.

Output 1.?

Output Title

Programme Output Indicator
OI 2.1.3: Other

Measurement Unit

Target Value
1,00

Output Description

+ Add Output

Discard changes

Save changes



- Other outputs whose purpose does not fall within the scope of pilot actions or solutions
- Strategies, recommendations, policy briefs

Interreg
Alpine Space

Co-funded by
the European Union

What's the logic in the intervention logic?





Co-funded by
the European Union

Alpine Space

Dashboard

Applications

Calls

Programme

Controllers

Payments

System


English

?

👤

Project overview

Application form

Project version
(current)  V.1.0

A - Project identification

A - Project identification

B - Project partners

Partners overview

C - Project description

C.1 Project overall objective

C.2 Project relevance and context

C.3 Project partnership

C.4 Project work plan
WP1

C.5 Project Results


C.6 Project Time Plan

Application annexes

Check & Submit

Exports for AF (and
other)

Project privileges



A harmonised tool
by Interact

Dashboard / Applications / ASP0500485 – TEST / Project Results

C - Project description

C.5 Project Results

What do you expect to change because of the activities you plan to implement and the outputs you plan to deliver? Please have a look at the programme result indicators for the priority you choose and select those that you will contribute to. You can refer to the table below summarizing the programme result indicator.

If your project results do not contribute to one of the programme result indicators, please select "other" and precise your indicator. For more information on the programme result indicators, the definition of these and the related target value please refer to the Interreg Programme).

Result 1

Programme result indicator
RI 2.1: Solutions taken up or up-scaled by organisations

Measurement unit
solutions

Baseline
0,00

Target value
1,00

Delivery period

Result description

+ Add result

Discard changes

Save changes

- Solutions developed by the project and taken up or up-scaled by organisations
- Target value is the solution taken up by organisations
- Organisations adopting the solution may or may not be a participant in the project

What's the logic in the intervention logic?



Interreg
Alpine Space

Co-funded by
the European Union

DashboardApplicationsCallsProgrammeControllersPaymentsSystemEnglish?

Project overview

Application form

Project version
(current) V.1.0

A - Project identification

A - Project identification

B - Project partners

Partners overview

C - Project description

C.1 Project overall objective

C.2 Project relevance and context

C.3 Project partnership

C.4 Project work plan
WP1

C.5 Project Results

C.6 Project Time Plan

Application annexes

Check & Submit

Exports for AF (and
other)

Project privileges

Jems
A harmonised tool
by Interact

Dashboard / Applications / ASP0500485 - TEST / Project Results

C - Project description

C.5 Project Results

What do you expect to change because of the activities you plan to implement and the outputs you plan to deliver? Please have a look at the programme result indicators for the priority you choose and select those that you will contribute to. You can refer to the table below summarizing the programme result indicator.

If your project results do not contribute to one of the programme result indicators, please select "other" and precise your indicator. For more information on the programme result indicators, the definition of these and the related target value please refer to the Interreg Programme).

Result 1

Programme result indicator
RI 2.1.0: Other

Measurement unit

Baseline0,00

Target value1,00

Delivery period

Result description

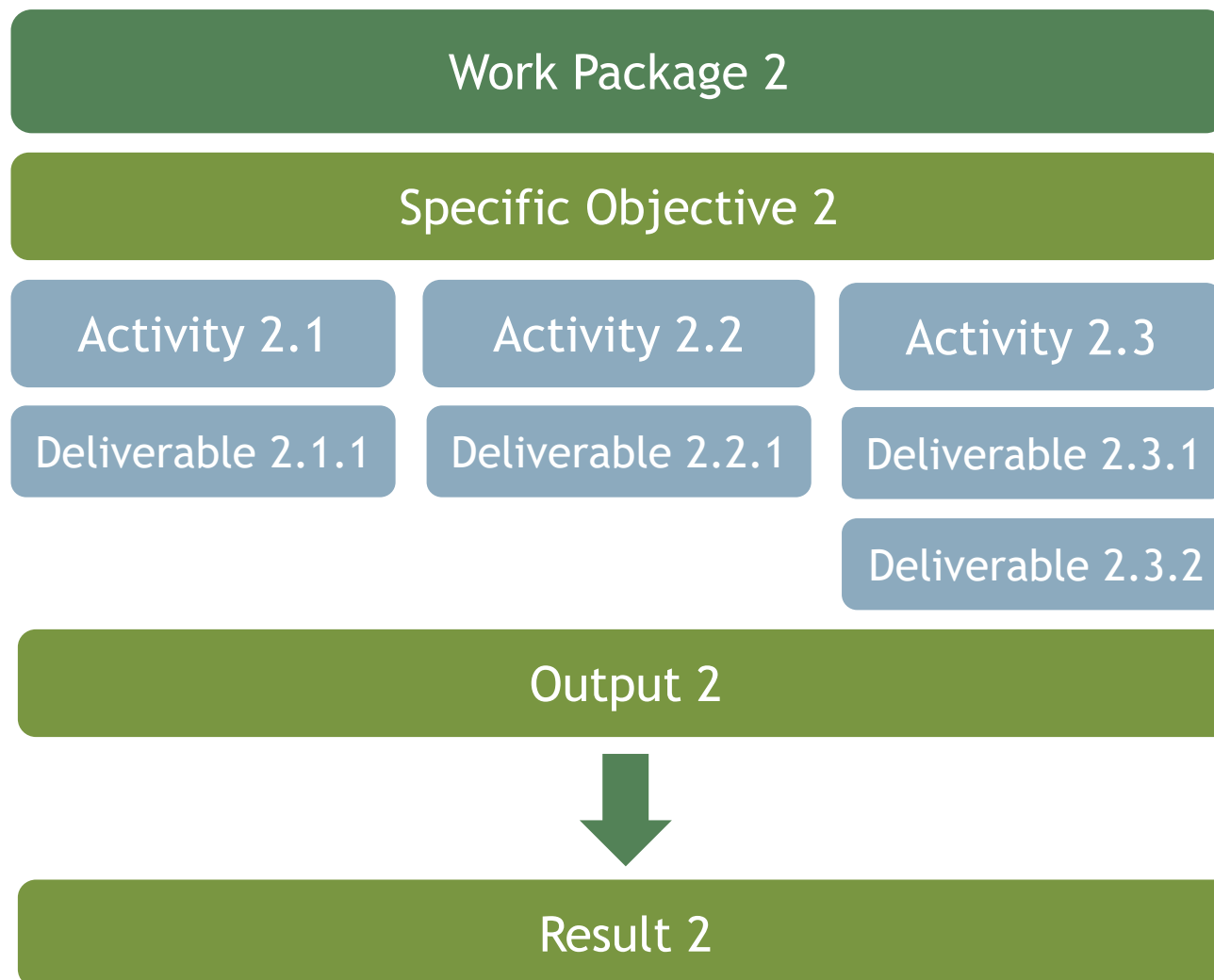
+ Add result

Discard changes

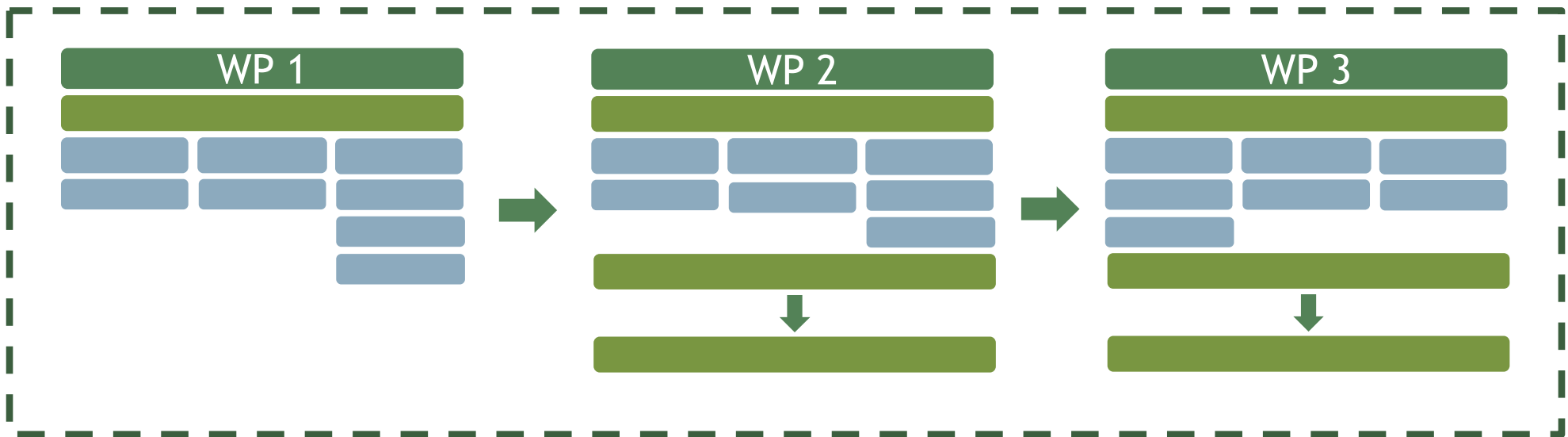
Save changes

- Pick „Other“ in case the programme result indicator does not make sense to explain the project achievement or the change the project is aiming for

What's the logic in the intervention logic?



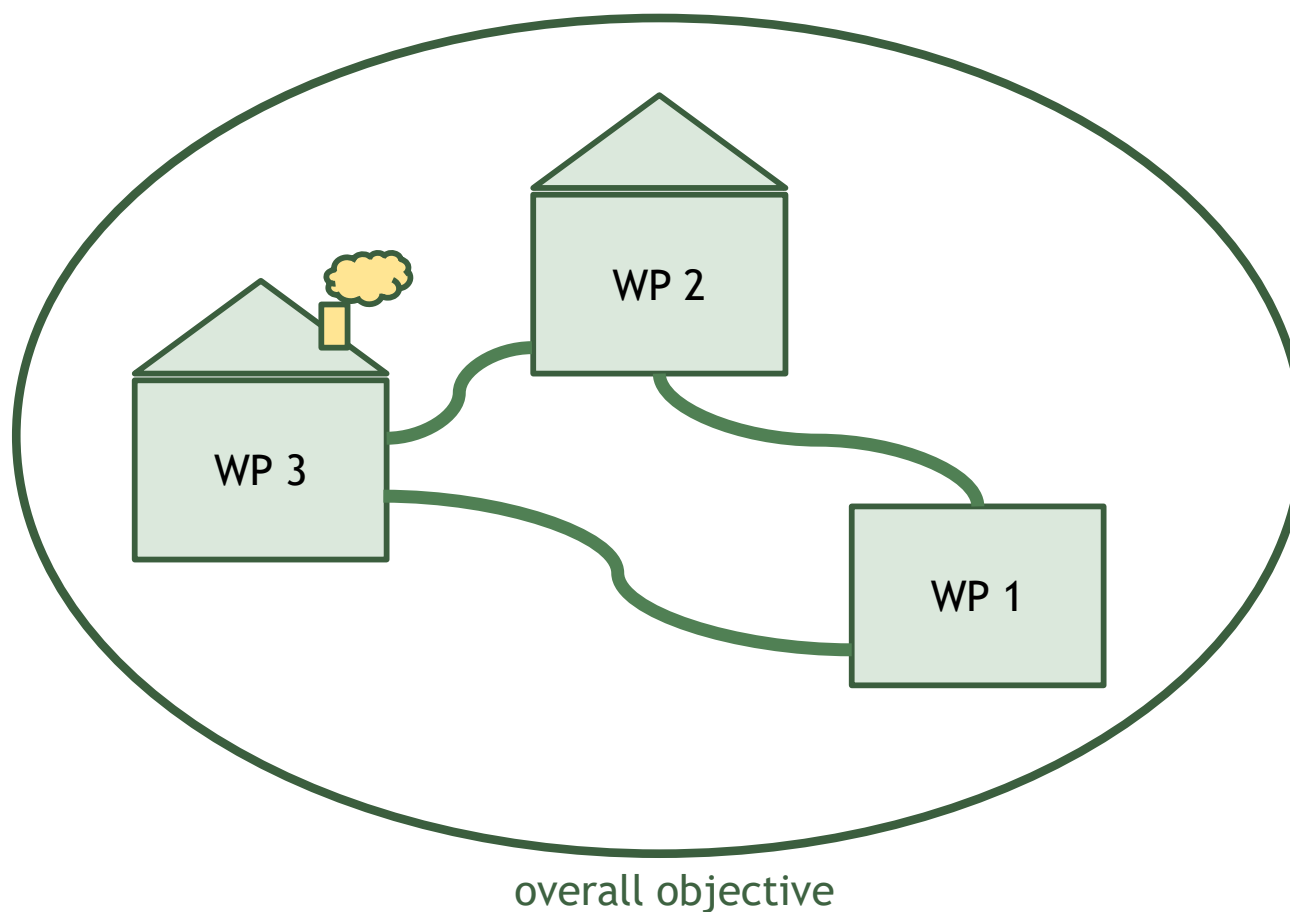
What's the logic in the intervention logic?



What's the logic in the intervention logic?



In a nutshell...



What's the logic in the intervention logic?



Common mistakes:

- The tool or methodology tested in the pilot is not reflected in the jointly developed solution
- Several outputs are labelled as jointly developed solution, while the pilot action only focus on testing a specific product
- The pilot is not the test and validation of a specific product, but rather an activity
- Two pilots lead to the same jointly developed solution
- Result and outputs are not differentiated sufficiently
- Expected results do not match the overall objective

What's the logic in the intervention logic?



A quality project should:

- Show clear and direct **contribution** to one of the **thematic focuses** listed in the ToR
- **Implementation oriented** -> developing and testing concrete solutions
- **Durability and transferability** -> uptake and long term use of outputs
- Strong **transnational** character of the project
- Coherent partnership with necessary **competences**
- Clear **intervention logic**

What's the logic in the intervention logic?



A quality project should:

- **Adequately demonstrate synergy** when mentioning a strategy or a previous project
- Not have a partnership that is **too homogeneous** or **cover only a small part of the territory**
- **Actively involve key actors** in a theme or sector
- **Plan strategy for result transfer** to permanent structures (EUSALP, Alpine Convention...)



EXERCISE

Interreg



Co-funded by
the European Union

Alpine Space

EXERCISE - the setup




Project Scenario: Reducing Pollution in Nature Parks

 There is a Alpine nature park that is an important natural and tourism area.

 The park suffers from pollution and biodiversity degradation, due to over-tourism.

 The same problem also affects other nature parks in different Alpine countries, requiring a joint solution.

 Your organisation is collaborating with others from the Alpine Space to secure Interreg funding.

EXERCISE - WASTELESS



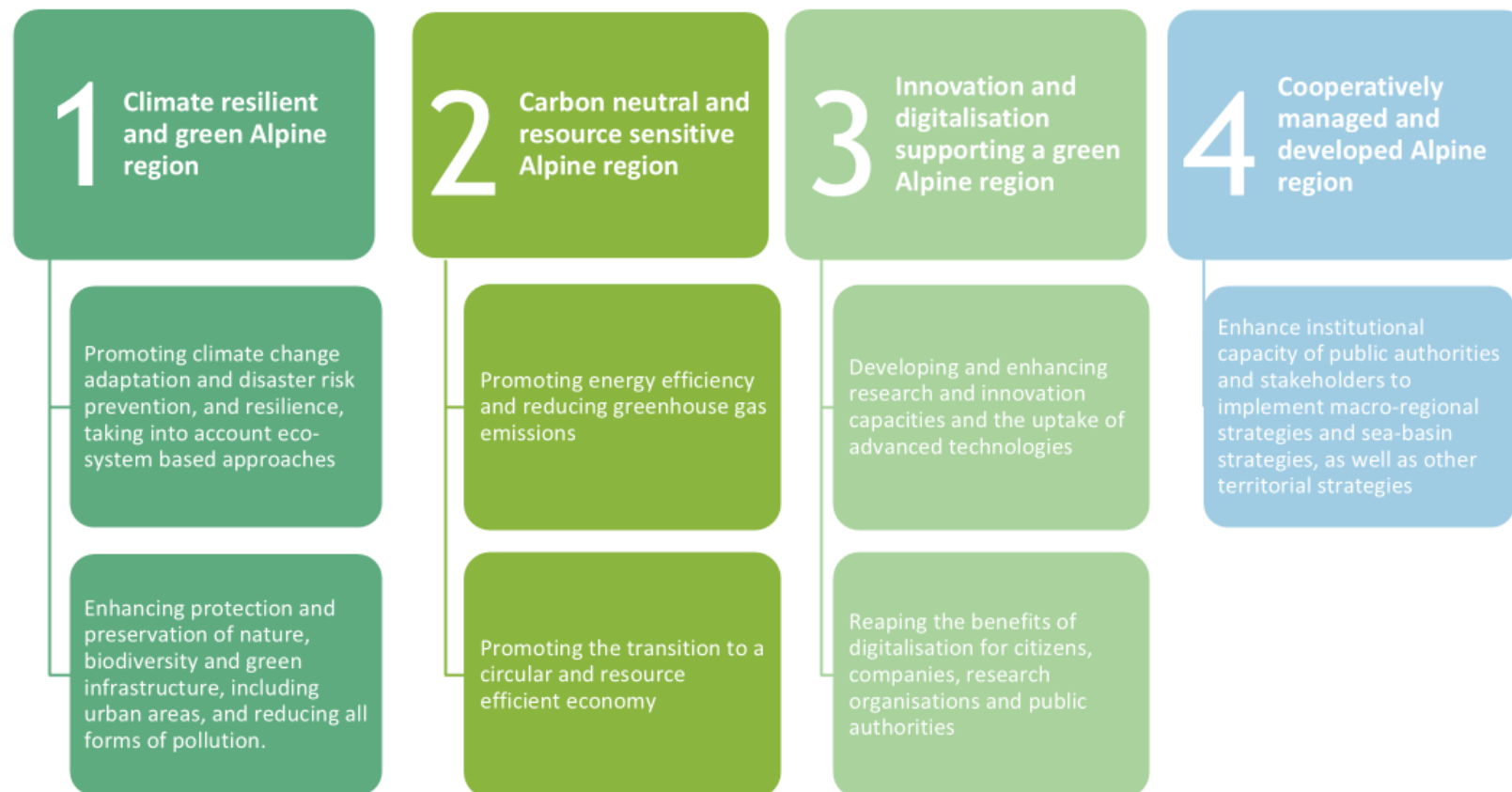
Project WASTELESS - Waste Awareness & Sustainable Technologies for Environmental Landscape Enhancement in Sensitive Sites

Project Overall Objective

To reduce environmental pollution in four nature parks, by improving the waste management systems, raising public awareness, and improving cooperation between public authorities.

💡 **QUESTION 1** : Which Priority/SO of the programme would it be relevant to address this common Alpine challenge?

EXERCISE - WASTELESS



EXERCISE - WASTELESS



💡 QUESTION 1 : Which Priority/SO of the programme would it be relevant to address this common Alpine challenge?

- 1.2 Enhancing protection and preservation of nature, biodiversity and green infrastructure, including urban areas, and reducing all forms of pollution
- 2.2 Promoting the transition to a circular and resource efficient economy
- 3.2 Reaping the benefits of digitalisation for citizens, companies, research organisations and public authorities

EXERCISE - the specific objectives



 **QUESTION 2:** Which formulation is the right for the SO of WP2

Objectives	Work packages title	Enhance public awareness and engagement	
	Work package number	2	
	Project specific objective	 To increase awareness and active participation of visitors and local communities in sustainable waste management.	 To organise clean-up campaigns implemented jointly in all partner regions and provide an educational toolkit on sustainable waste practices

EXERCISE - the output indicators and target values



💡 **QUESTION 3:** Identify the correct output indicators and target values for the following WPs

5 minutes per example (3 examples)

Output indicators

RCO 84	Pilot actions developed jointly and implemented in projects
RCO 116	Jointly developed solutions
Other	An output which is neither a pilot action nor a jointly developed solution



RCO 84 Pilot actions developed jointly and implemented in projects

RCO 116 Jointly developed solutions

Other An output which is neither a pilot action nor a jointly developed solution

Outputs	Output	Programme output indicator	Measurement unit	Output title	Output description	Result indicator target value
	O 1.1			Testing the digital management system in protected areas	The tool is tested in 4 protected areas	
	O 1.2			Sustainable waste management system	An innovative digital management tool to track waste types and volumes in real time	

EXERCISE - the output indicators and target values



Outputs	Output	Programme output indicator	Measurement unit	Output title	Output description	Result indicator target value
	O 1.1	RCO84 Pilot actions developed jointly and implemented in projects	Pilot action	Testing the digital management system in protected areas	The tool is tested in 4 protected areas	1
	O 1.2	RCO116 Jointly developed solutions	Solution	Sustainable waste management system	An innovative digital management tool to track waste types and volumes in real time	1



RCO 84 Pilot actions developed jointly and implemented in projects

RCO 116 Jointly developed solutions

Other An output which is neither a pilot action nor a jointly developed solution

Outputs	Output	Programme output indicator	Measurement unit	Output title	Output description	Result indicator target value
	O 2.1			Public awareness campaigns conducted	Clean-up campaigns implemented jointly in all partner regions, involving at least 500 participants in total.	
	O 2.2			Educational toolkit	Educational toolkit on sustainable waste practices for schools and youth groups (available in multiple languages)	

EXERCISE - the output indicators and target values



Outputs	Output	Programme output indicator	Measurement unit	Output title	Output description	Result indicator target value
	O 2.1	Other	N/A	Public awareness campaigns conducted	Clean-up campaigns implemented jointly in all partner regions, involving at least 500 participants in total.	1
	O 2.2	Other	N/A	Educational toolkit	Educational toolkit on sustainable waste practices for schools and youth groups (available in multiple languages)	1

EXERCISE - the output indicators and target values



Pilot actions (RCO84)	Solutions (RCO116)	Other
<p>→ concept/format of pilot actions</p> <p><u>concept</u> jointly developed by the project</p> <p>used for implementing your pilot activities</p> <p>⚠ <u>target value</u> concept 😊 each single pilot activity implemented 😞</p>	<p>→ implementation-oriented character</p> <p><u>practical solutions / products</u> jointly developed by the project</p> <p>e.g. tool-boxes, models, instruments, action plans, concepts/methods, roadmaps, processes...</p>	<p>→ strategic character</p> <p>no “pilot action” and no “solution”</p> <p>e.g. strategies, recommendations, policy briefs, toolboxes, training modules etc.</p>

EXERCISE - the project results



RCR 104

Solutions taken up or up-scaled by organisations

Other

Programme result indicator does not make sense to explain the project achievement or the change the project is aiming for

Result Nr.	Programme result indicator	Measurement unit	Result description	Result indicator baseline	Result indicator target value
RI 1			Improved waste management in 4 nature parks leading to a cleaner environment, through the adoption of the sustainable waste management system	0	
RI 2			Increased public awareness and engagement in sustainable waste practices	0	
RI 3			Stronger cooperation ensuring long-term environmental protection	0	

Interreg



Co-funded by
the European Union

Alpine Space

EXERCISE - the project results



Result Nr.	Programme result indicator	Measurement unit	Result description	Result indicator baseline	Result indicator target value
RI 1	RCR 104 Solutions taken up or up-scaled by organisations	Solution	Improved waste management in 4 nature parks leading to a cleaner environment, through the adoption of the sustainable waste management system	0	1
RI 2	Other	N/A	Increased public awareness and engagement in sustainable waste practices	0	1
RI 3	Other	N/A	Stronger cooperation ensuring long-term environmental protection	0	1

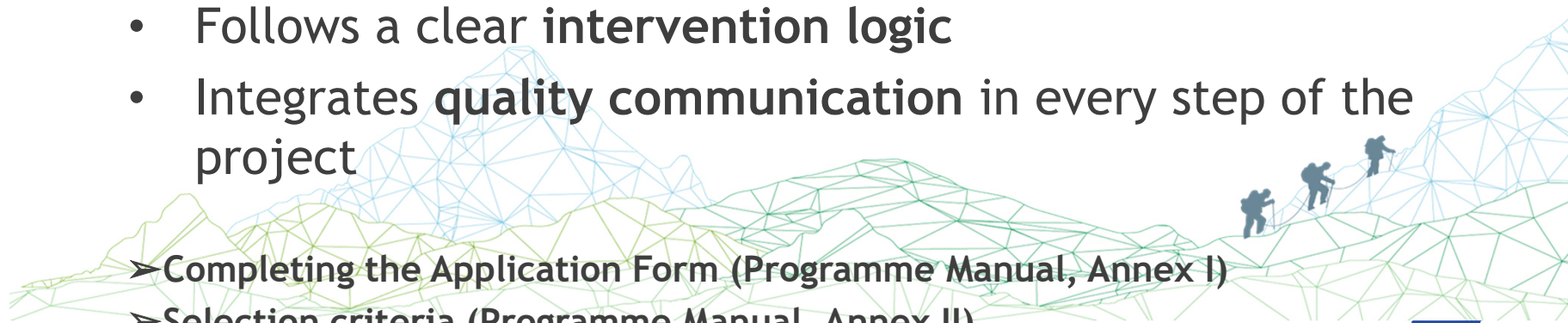
Summary



A good project...

- Aligns with the **objectives** of the programme
- Has a clear transnational approach
- Ensures a **balanced partnership** (thematic & geographical)
- Builds on **existing knowledge**
- Delivers **measurable, realistic, sustainable & transferable results**
- Contributes to **relevant strategies and policy fields**
- Follows a clear **intervention logic**
- Integrates **quality communication** in every step of the project

- Completing the Application Form (Programme Manual, Annex I)
- Selection criteria (Programme Manual, Annex II)



Interreg



Co-funded by
the European Union

Alpine Space

What's the logic in the intervention logic?



ASSESSMENT CRITERIA STEP 2*

Strategic criteria

(60 points)

Marks given in step 1 will be kept in step 2. Based on the quality of answer(s) and amendments provided in the application form following the Programme Committee recommendations, the evaluation of some criteria already assessed in step 1 may be revised in step 2.

Project relevance (20 points)

Partnership
relevance (15 points)

Intervention logic
(15 points)

Cooperation
character
(10 points)

Operational criteria

(40 points)

Work plan (20 points)

To what extent is the work plan realistic, consistent and coherent?

Com (10 points)

To what extent are communication activities appropriate to reach the relevant target groups and stakeholders?

Budget (10 points)

To what extent is the project budget used in accordance with the principles of economy, efficiency and effectiveness?

*According to the Programme manual, Annex IIa

Interreg



Co-funded by
the European Union

Alpine Space



Questions?

Interreg



Co-funded by
the European Union

Alpine Space



PROJECT SYNERGIES

Interreg



Co-funded by
the European Union

Alpine Space

Synergies with other projects or initiatives



Section C.2.6 of the application form

- Which tools, knowledge, or methodologies developed by past or ongoing projects will your proposal use?
- Which synergies and mutual benefits can be expected from collaboration with other ongoing projects or initiatives?

Guidance

- ◇ Be precise when identifying the project or initiative.
- ◇ Be concrete in the description (e.g., name the specific project product you plan to use and indicate in which activity or outcome it will be applied).
- ◇ Less (very focused) is more.

-> added value of the project! (C.2.7)

Contribution to wider strategies and policies



Section C.2.5 of the Application Form

Regional and national levels

- These levels are closest to the consortium and are where your solutions can have a more immediate impact on the policy cycle.
- Often overlooked.

Guidance

- ◇ Outline which documents (e.g., regional plans) your output will directly contribute to → how is it taken up/incorporated by the final users?
- ◇ Relevant national-level strategies may exist only in some countries but can be highly relevant to the topic you are addressing.

Contribution to wider strategies and policies



Section C.2.5 of the Application Form

Alpine and EU levels

- How does your project contribute to the implementation of strategies and policy frameworks, with particular regard to EUSALP and the Alpine Convention?
- Same for the EU level (generally well described in Step 1).

Guidance

- ◇ Be concrete: Operationalise your contribution by identifying specific priority activity implemented by working groups (*Alpine Convention*) or action groups (*EUSALP*) -> Use your work plans for targeted activities or products.
- ◇ Consult these actors' work plans and establish direct contact with them.

Alpine Convention



- International treaty for the long-term protection of the Alpine region and its ecosystems -> relevant governance actor in the Alps
- 8 countries involved
- Opportunities for synergies:
 - Multi-annual work programme
 - 8 thematic working bodies
 - Events overview
- Project implementation and dissemination of results -> mutual benefits
- Support from the Alpine Space JS

EUSALP



- European Union strategy for the Alpine region
- 7 Countries and 48 Regions involved
- Opportunities for synergies:
 - EUSALP Action plan
 - 9 thematic action groups (AGs)
- Project implementation and dissemination of results -> mutual benefits
- Support from the Alpine Space JS and EUSALP Technical Support Structure



Aleš Kegl

Project Officer

Phone +43 662 8042 3721

Mobile : +43 664 8284 126

E-Mail : ales.kegl@alpine-space.eu

www.alpine-space.eu



Matteo Decostanzi

Project Officer

Phone: +43 662 8042 3708

Mobile: +43 664 8565 671

E-Mail : matteo.decostanzi@alpine-space.eu

www.alpine-space.eu

THANK YOU DANKE MERCI GRAZIE HVALA

Interreg



Co-funded by
the European Union

Alpine Space