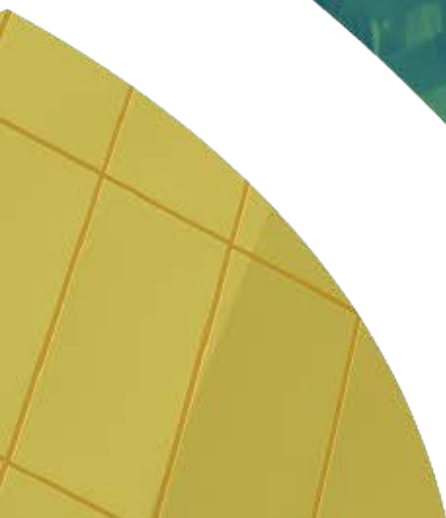


**Interreg**  
Alpine Space



**Report - AS Knowledge Atlas  
Learning & Mentoring, D.T1.4.2**

Draft v1.6



## 1 EXECUTIVE SUMMARY

---

### 1.1 PROJECT OVERVIEW

The Alpine Space arena is becoming a leading destination for technology providers in the area of Smart Living, but is hindered by fragmentation in the research and innovation landscape, which prevents the transnational region from becoming the center of European excellence. CARE4TECH looks to bridge the gap in this fragmented landscape, by generating a coordinated approach to Smart Living technology development. CARE4TECH focuses on creating and maintaining strong ties between quadruple-helix actors; what this means in practice is creating structures that improve the communication and transparency between research institutions, businesses, government, and civil society as a whole. By improving these ties, the project aims to align policy development with real civil and market drivers.

### 1.2 MAIN PROJECT RESULTS ARE:

- Alpine Space KNOWLEDGE ATLAS - Map of leading cases and approaches classified in a Knowledge Atlas,
- Alpine Space ALLIANCES - Thematic excellences grouped to cooperate,
- Alpine Space TASK FORCES and ALPINE CAMPUS- Supported by quadruple helix based teams to jointly learn and innovate through a living lab based learning system and
- Alpine Space THINK TANK - Set up of a permanent policy and stakeholder's platform linked to EU initiatives to fully exploit outputs and their technological strategic potential.

### 1.3 WORK PACKAGE OVERVIEW

Work Package 1 (WPT1) is the first content step in CARE4TECH, and aims to create a common knowledge base (or KNOWLEDGE ATLAS) for all members of the project partnership and their stakeholders related to the topic of Smart Living. WPT1 characterized by data gathering and the generation of knowledge sharing structures. The identification of leading Alliances on Smart Living and the definition of the preconditions for their constitution is a crucial step in the representation of these common working procedures.

### 1.4 AS KNOWLEDGE ATLAS LEARNING & MENTORING REPORT OVERVIEW

The AS Knowledge Atlas Learning & Mentoring Report seeks to present a good overview of the outcomes and learning processes Partners produced and experienced during WPT1. The sections of this report include the use of IT learning platform, results of 11 mobilities, outcomes of the 11 learning units implemented by each partner and separate analysis of policy learners.