

investing in your future



Greetings from the
Alpine Space Programme
.....
CAPACities



The programme is co-funded
by the European Regional
Development Fund

CAPACities

While rural areas and little towns and villages in the Alpine Space form an important part of the region's social, economic and cultural heritage, tailor-made policy solutions to specific territorial challenges are often lacking.

CAPACities created a transferable set of innovative policies emerging from 22 pilot activities in response to local needs and to improve the role of SLUC* in the large Alpine region. The resulting toolkit provides guidelines on how to make better use of local potential based on an innovative, place based and participatory approach.

Key results

- + Strategic plans for territorial governance and new approaches
- + Set of innovative policies for SLUC* in the Alpine Space
- + GIS to monitor the attractiveness and competitiveness of cities

EU support (ERDF) of over € 1,969,000

Duration 10.2008 - 03.2011

* Small Local Urban Centre

Competitiveness Actions and Policies for Alpine Cities

Partners

Regione Lombardia - Direzione Generale Sistemi Verdi e Paesaggio **IT**

DI Herbert LISKE, Ingenieurkonsulent für Raumplanung und

Raumordnung **AT**

Canton Grigioni, Ufficio per lo sviluppo territoriale dei Grigioni **CH**

Conseil d'Architecture, d'Urbanisme et de l'Environnement de Vaucluse .. **FR**

Institut d'Urbanisme de Grenoble **FR**

Langhe Monferrato Roero soc.cons arl **IT**

Regione Autonoma Valle d'Aosta **IT**

Regione Piemonte - direzione Programmazione Strategica, Politiche

Territoriali, Edilizia - settore Pianificazione Territoriale Regionale **IT**

Nacionalno turistično združenje **SI**

Znanstvenoraziskovalni center Slovenske akademije znanosti in

umetnosti, Geografski inštitut Antona Melika **SI**

www.alpine-space.eu/capacities



investing in your future



Greetings from the
Alpine Space Programme

InnoCité



The programme is co-funded
by the European Regional
Development Fund

InnoCité

Representatives of small and medium-sized towns, who have been elected in the different Alpine territories, require solutions to face the loss of identity and the decrease in population and enterprises that their cities are experiencing.

InnoCité developed an empowering toolkit for decision-makers, in order to promote the complementary positioning of small towns in relation to large agglomerations and to position their cities depending on competitors. The results of the project have helped to monitor the competitiveness and attractiveness of these towns and have assisted in the proposal of new policies.

Key results

- + Guideline for a new territorial governance approach
- + Key indicators to compare city attractiveness
- + InnoServices: tool to develop services and attract enterprises

EU support (ERDF) of over € 1,686,000

Duration 07.2008 - 06.2011

How to improve competitiveness of small-medium cities under the influence of Alpine great urban centres

Partners

| | |
|--|----|
| Chambre de Commerce et d'Industrie de Lyon | FR |
| Amt der Niederösterreichischen Landesregierung | AT |
| Salzburger Institut für Raumordnung und Wohnen | AT |
| Bayerisches Staatsministerium für Wirtschaft, Infrastruktur, Verkehr und Technologie | DE |
| Région Franche-Comté | FR |
| Ville de Lure | FR |
| Regione Lombardia | IT |
| Regionalni razvojni center Koper | SI |

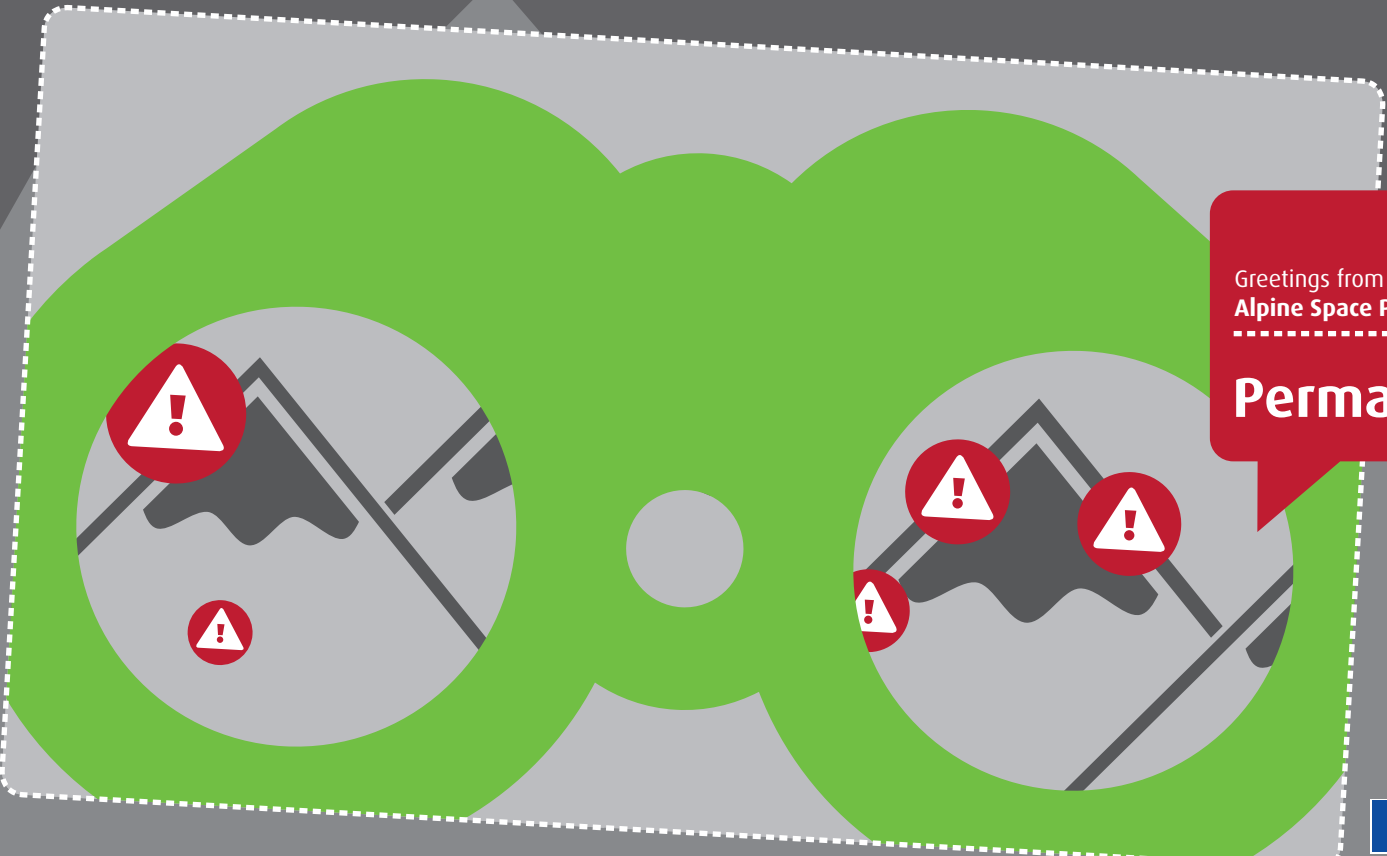
www.alpine-space.eu/innocite



EUROPEAN TERRITORIAL COOPERATION



investing in your future



Greetings from the
Alpine Space Programme

PermaNET



The programme is co-funded
by the European Regional
Development Fund

PermaNET

Before the project started, the knowledge and data that existed on permafrost and related natural hazards differed regionally throughout the Alps.

PermaNET created the first permafrost monitoring network covering the entire Alps. Its activities have contributed towards the development of a strategy for dealing with natural hazards and managing the negative consequences of climate change. The available data on permafrost was compiled into a harmonized and standardized dataset, which made it possible to produce the very first map of permafrost distribution in the Alps, available online and regularly updated.

Key results

- + Recommendations for the consideration of permafrost in risk management
- + Report on permafrost and water resources management
- + State-of-the-art report on hazards related to permafrost

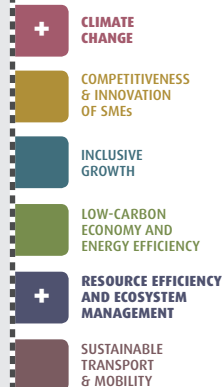
EU support (ERDF) of over € 2,472,000
Duration 07.2008 - 09.2011

Long-Term Permafrost Monitoring Network

Partners

| | |
|--|----|
| Provincia Autonoma di Bolzano - Autonome Provinz Bozen | IT |
| Österreichisches Bundesministerium für Landwirtschaft, Forstwirtschaft, Umwelt und Wasserwirtschaft | AT |
| Universität Innsbruck | AT |
| Universität Graz | AT |
| Zentralanstalt für Meteorologie und Geodynamik | AT |
| Bundesamt für Umwelt | CH |
| Bayerisches Landesamt für Umwelt | DE |
| Centre National de la Recherche Scientifique | FR |
| Grenoble INP, GIPSA-lab | FR |
| Université Joseph Fourier | FR |
| ARPA Piemonte | IT |
| Provincia Autonoma di Trento | IT |
| Regione Autonoma Valle d'Aosta | IT |
| Regione del Veneto | IT |

www.alpine-space.eu/permanet



investing in your future



Greetings from the
Alpine Space Programme

Alps Bio Cluster



The programme is co-funded
by the European Regional
Development Fund

Alps Bio Cluster

Health and biotechnology sectors in Europe are dominated by large enterprises, as these have the necessary resources to invest in research and innovation.

Alps Bio Cluster established a transnational cluster in the field of medical technologies, e-health and biotechnologies to increase development opportunities for small businesses and promote technology transfer between research centers and SMEs. The project created an organisation model for a meta cluster that will continue to brand the region and facilitate trans-cluster activities. 16 transnational economic clusters have been strengthened.

Key results

- + More than 200 SMEs and research centres involved
- + Transalpine search engine for biotechnologies
www.alpslifesciencesearch.com
- + 2 Summer Schools on Biotech and Medtech

EU support ERDF of over € 1,300,000

Duration 10.2008 - 09.2011

A healthy life at home in the Alps in a natural environment worth to be preserved

Partners

| | |
|--|----|
| MEDIC@LPS (ex. ADEBAG) for the Rhône-Alpes Bio Cluster | FR |
| Tiroler Zukunftsstiftung | AT |
| BioAlps | CH |
| Fachhochschule Weihenstephan, Fakultät Biotechnologie und Bioinformatik | DE |
| Helmholtz-Zentrum München | DE |
| Lyonbiopôle | FR |
| BioIndustry Park Silvano Fumero S.p.a. | IT |
| Camera di Commercio Industria Artigianato Agricoltura di Milano | IT |

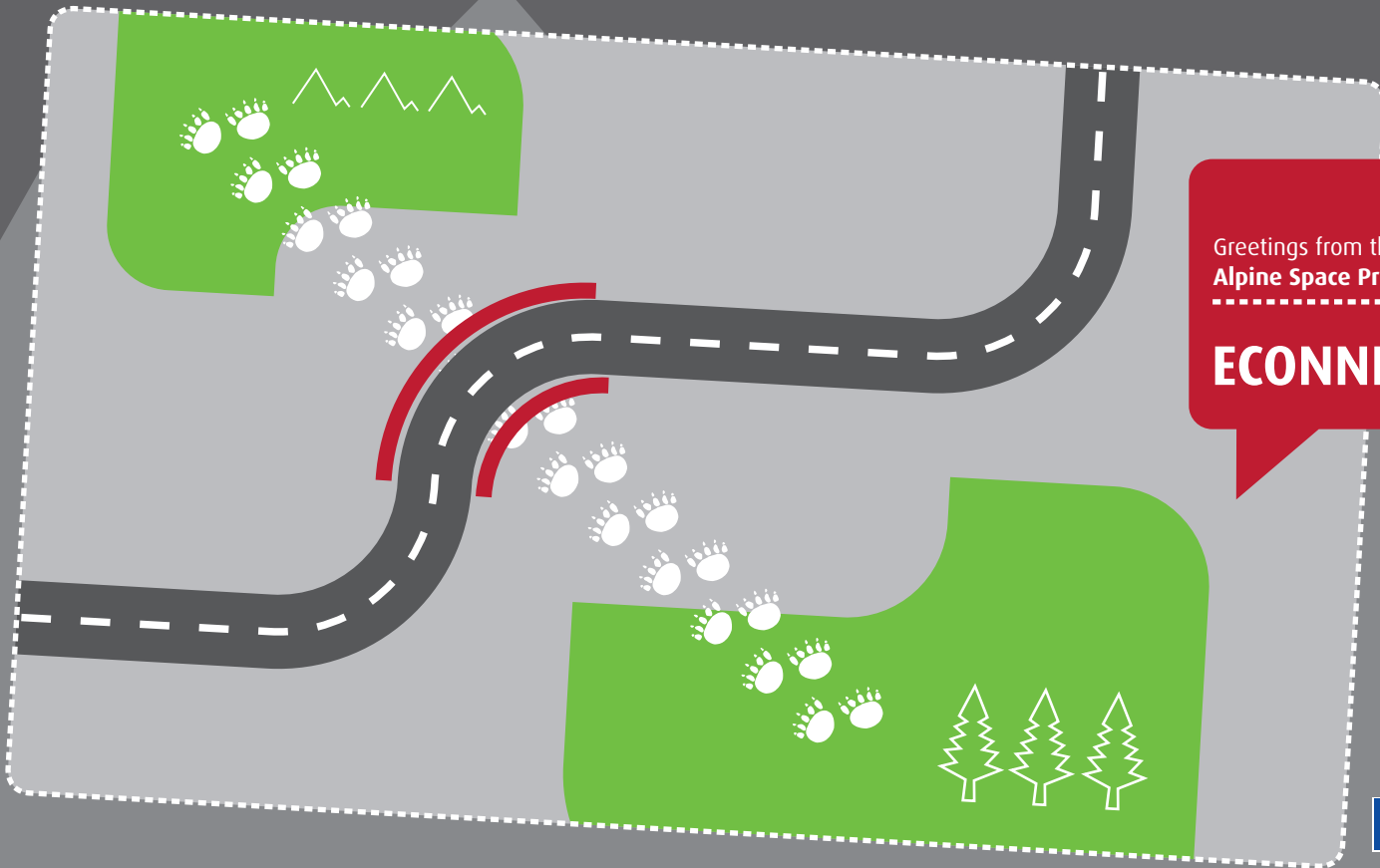
www.alpine-space.eu/alpsbiocluster



EUROPEAN TERRITORIAL COOPERATION



investing in your future



Greetings from the
Alpine Space Programme

ECONNECT



The programme is co-funded
by the European Regional
Development Fund

ECONNECT

Restoring the web of life

The Alps are one of Europe's largest biodiversity pools (some 43,000 species) and, at the same time, one of the most intensively exploited mountain ranges (some 100 million tourists per year).

ECONNECT has shown that the reduction of habitat fragmentation in the Alpine Arc is essential in achieving effective biodiversity conservation. The project explored the best options for coordinated action and developed innovative tools to promote Alpine-wide ecological connectivity (JECAMI - the online tool for decision-makers based on Geographic Information Systems).

Key results

- + JECAMI: analyses/visualises the connectivity potential of an area
- + Set of recommendations for achieving ecological connectivity
- + Legal framework for measures for ecological connectivity

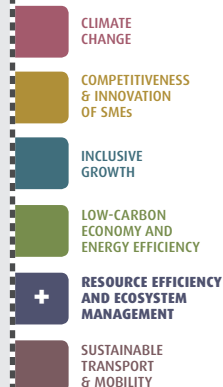
EU support (ERDF) of over € 2,285,000

Duration 09.2008 - 11.2011

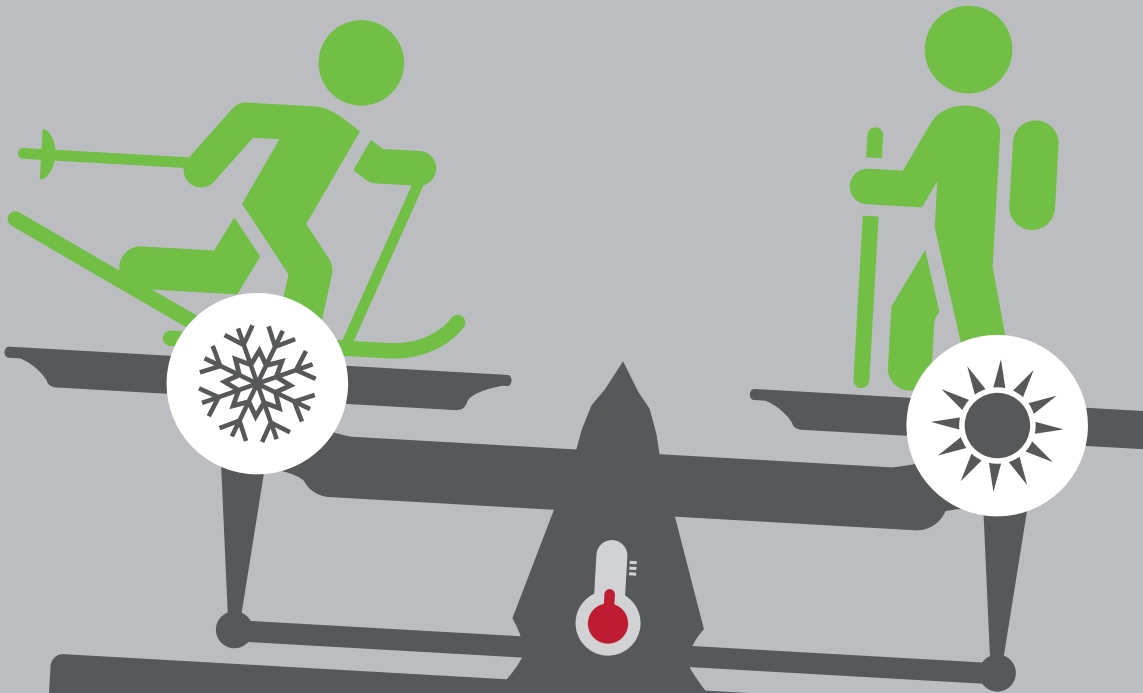
Partners

| | |
|--|----|
| Veterinärmedizinische Universität Wien; Forschungsinstitut für Wildtierkunde und Ökologie | AT |
| Nationalpark Gesäuse GmbH | AT |
| Nationalparkrat Hohe Tauern | AT |
| Umweltbundesamt GmbH, Landnutzung & Biologische Sicherheit | AT |
| Universität Innsbruck, Institut für Ökologie | AT |
| Parc Naziunal Svizzer | CH |
| Nationalparkverwaltung Berchtesgaden | DE |
| Commission Internationale pour la Protection des Alpes (CIPRA) | FL |
| Conseil général du Département d'Isère | FR |
| IRSTEA Grenoble unité de recherche Ecosystèmes Montagnards | FR |
| Task Force Protected Areas - Permanent Secretariat of the Alpine Convention | FR |
| Ministero dell'Ambiente e della Tutela del Territorio e del Mare | IT |
| Accademia Europea di Bolzano, EURAC | IT |
| Parco Naturale Alpi Marittime | IT |
| Regione Autonoma Valle d'Aosta - Assessorato agricoltura e risorse naturali - Dipartimento risorse naturali - Servizio aree protette | IT |
| WWF Italia | IT |

www.alpine-space.eu/econnect



investing in your future



Greetings from the
Alpine Space Programme

ClimAlpTour



The programme is co-funded
by the European Regional
Development Fund

ClimAlpTour

Alpine tourism, a change beyond climate

Tourism is a major Alpine sector which is very sensitive to climate change. This has a strong impact on economic development and leads to conflicts between stakeholders.

ClimAlpTour analysed the environmental, social and economical impacts of climate change on the tourism sector. Based on this territorial analysis, appropriate and tailored-made strategies were developed for local administrations, NGOs and tourism stakeholders in order to tackle the negative impacts of climate change on Alpine tourism.

Key results

- + e-Tool: adaptation strategies according to climate change scenarios
- + Conjoint analysis on tourists' preferences and expert hearing
- + The raising of awareness amongst policy-makers and tourism stakeholders

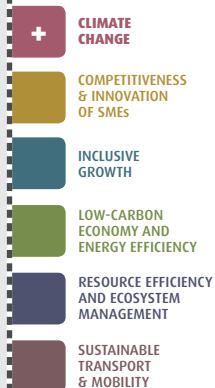
EU support (ERDF) of over € 1,999,000

Duration 09.2008 - 11.2011

Partners

| | |
|---|----|
| Regione del Veneto, Unita di Progetto Foreste e Parchi | IT |
| United Nations Environment Programme in Vienna | AT |
| Universität Innsbruck | AT |
| Haute école spécialisée de Suisse occidentale Valais, Institut Economie & Tourisme | CH |
| Hochschule für Technik Rapperswil, Forschungsstelle für Freizeit, Tourismus und Landschaft, Institut für Landschaft und Freiraum | CH |
| Hochschule für Technik und Wirtschaft HTW Chur, Institut für Tourismus- und Freizeitforschung | CH |
| Institut Universitaire Kurt Bösch | CH |
| Alpenforschungsinstitut | DE |
| Hochschule München, Fakultät für Tourismus | DE |
| Université de Savoie, Institut de la Montagne | FR |
| Ente Regionale per i Servizi all'Agricoltura e alle Foreste | IT |
| EURAC Accademia Europea di Bolzano | IT |
| Ministero dell'Ambiente e della Tutela del Territorio e del Mare | IT |
| Regione Autonoma Valle D'Aosta, Assessorato Territorio Ambiente e Opere Pubbliche, Direzione Ambiente | IT |
| Regione Autonoma Valle D'Aosta, Direzione Turismo | IT |
| Unione Nazionale Comuni, Comunità Enti Montani Piemonte | IT |
| World Wide Fund for Nature | IT |
| Geografski inštitut Antona Melika | SI |

www.alpine-space.eu/climalptour





Greetings from the
Alpine Space Programme

CO₂-NeuTrAlp



The programme is co-funded
by the European Regional
Development Fund

CO2-NeuTrAlp

CO2-Neutral Transport for the Alpine Space

The transport sector is increasingly contributing towards global warming and the steady growth in the demand for mobility jeopardises policies to reduce carbon emissions from transport.

CO2-NeuTrAlp has showcased the applicability of innovative transport technologies in combination with intelligent mobility schemes and the use of endogenous renewable energy technologies in the Alps. Project activities have, for example, helped to increase the use of public transport and to reduce unnecessary trips. Most of the locally implemented activities are perennial and some have been extended to entire regions.

Key results

- + Sustainability Criteria for Renewable Energies in Alpine Transport
- + “Renewable Energies in Transport” - 2 guidelines on local actions to promote the shift towards the age of solar mobility (1 for decision makers and 1 for transport professionals)

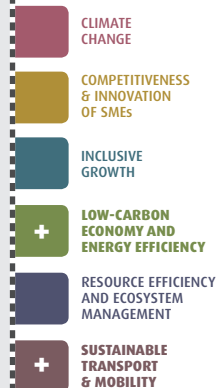
EU support (ERDF) of over € 2,561,000

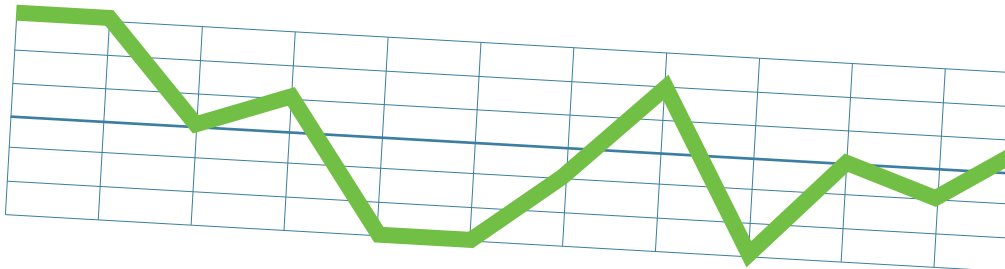
Duration 09.2008 - 01.2012

Partners

| | |
|--|----|
| B.A.U.M. Consult GmbH, München | DE |
| Austrian Mobility Research, FGM-AMOR, GmbH | AT |
| Holding Graz - Kommunale Dienstleistungen GmbH | AT |
| AllgäuNetz GmbH & Co. KG | DE |
| Helmholtz Zentrum München GmbH | DE |
| Rhônealpiénergie-Environnement | FR |
| Comune di Padova, Ufficio Mobilità Ciclabile | IT |
| Comune di Torino - Settore Sostenibilità Ambientale, Settore Relazioni Internazionali; GTT - Gruppo Torinese Trasporti S.p.A | IT |
| Dolomiti Bus Spa | IT |
| Parco Nazionale Cinque Terre | IT |
| Provincia di Belluno, Servizio Mobilità e Trasporti | IT |
| Provincia di Brescia, Assessorato Trasporti | IT |
| Università Bocconi, CERTet - Centro di Economia Regionale, dei Trasporti e del Turismo | IT |
| Center za razvoj Litija, d.o.o. | SI |
| Univerza v Mariboru, Fakulteta za Gradbeništvo | SI |

www.alpine-space.eu/co2-neutralp





Greetings from the
Alpine Space Programme

Alp-Water-Scarce



The programme is co-funded
by the European Regional
Development Fund

Alp-Water-Scarce

Water Management Strategies against Water Scarcity in the Alps

The Alps are the water towers of Europe. Up until now, water scarcity has only affected small areas for short periods of time. However, in a changing climate, adaptation strategies are required.

Alp-Water-Scarce has provided tools to mitigate the risk of water scarcity, and has proposed instruments for the long-term management of water resources that support decision-making. The project developed a climatic scenarios guideline for the calculation of predicted future water resource availability and recommendations for managers and policy-makers on water management and water scarcity in the Alps.

Key results

- + Early Warning Systems in Carinthia (A), Arly (F), Piave (I) & Slovenia
- + Guideline: monitoring and modelling mountain water resources
- + A GIS-supported atlas with information on the 23 pilot areas

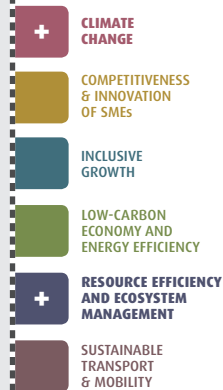
EU support (ERDF) of over € 2,827,000

Duration 10.2008 - 10.2011

Partners

| | |
|---|----|
| Université de Savoie, Institut de la Montagne | FR |
| Amt der Kärntner Landesregierung, Abteilung 8 | AT |
| Amt der Steiermärkischen Landesregierung, FA 19A | AT |
| Bundesanstalt für Agrarwirtschaft | AT |
| Paris Lodron Universität Salzburg, Zentrum für Geoinformatik | AT |
| Bundesamt für Umwelt | CH |
| Eidg. Anst. für Wasserversorgung, Abwasserreinig. u. Gewässerschutz ... | CH |
| Conseil Général de la Savoie | FR |
| Société d'Economie Alpestre | FR |
| Agenzia di Sviluppo Gal Genovese | IT |
| Agenzia Reg. per la Prevenzione e Protezione dell'Ambiente del Veneto | IT |
| Provincia Autonoma di Trento, Dipartimento Urbanistica e Ambiente | IT |
| Provincia di Alessandria | IT |
| Uncem Delegazione Piemontese | IT |
| Geološki Zavod Slovenije | SI |
| KGZS- Kmetijsko gozdarski zavod Maribor | SI |
| Nacionalni Inštitut za Biologijo | SI |

www.alpine-space.eu/alpwaterscarce



EUROPEAN TERRITORIAL COOPERATION



investing in your future



Greetings from the
Alpine Space Programme

CLISP



The programme is co-funded
by the European Regional
Development Fund

CLISP

Climate Change Adaptation by Spatial Planning in the Alpine Space

In the Alpine Space, climate change affects spatial development, including land use, socio-economic activities and ecosystem services, more severely than in other European regions.

CLISP has contributed to climate change adaptation by providing planners and decision-makers with climate-proof spatial planning solutions. The project proposed a transnational Alpine planning strategy, giving spatial planning a key role in future sustainable development to face the adversities brought about by climate change.

Key results

- + Guidance: assessing the extent to which spatial planning is climate-proof
- + Guidance: risk governance and risk communication
- + Vulnerability assessment method for spatial planning

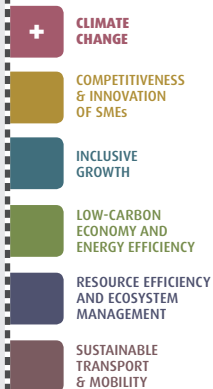
EU support (ERDF) of over € 1,660,000

Duration 09.2008 - 09.2011

Partners

| | |
|--|----|
| Umweltbundesamt GmbH | AT |
| Amt der Salzburger Landesregierung | AT |
| Amt der Steiermärkischen Landesregierung | AT |
| Amt der Oberösterreichischen Landesregierung | AT |
| Bundesministerium für Land- und Forstwirtschaft, Umwelt und Wasserwirtschaft | AT |
| United Nations Environment Programme, Interim Secretariat of the Carpathian Convention | AT |
| Bundesamt für Raumentwicklung, Strategieguppe Politik des Ländlichen Raumes | CH |
| Graubünden, Amt für Raumentwicklung | CH |
| Bayerisches Staatsministerium für Wirtschaft, Infrastruktur, Verkehr und Technologie | DE |
| Fürstentum Liechtenstein, Ressort Umwelt, Raum, Land- und Waldwirtschaft | FL |
| Accademia Europea di Bolzano, EURAC | IT |
| Ministero dell'Ambiente e della Tutela del Territorio e del Mare | IT |
| Provincia di Alessandria | IT |
| Urbanistični inštitut Republike Slovenije | SI |

www.alpine-space.eu/clisp





Riskplan



Greetings from the
Alpine Space Programme

AdaptAlp



The programme is co-funded
by the European Regional
Development Fund

AdaptAlp

Adaptation to Climate Change in the Alpine Space

Climate change affects the frequency and extent of natural hazards in the Alpine Space more severely than in other European regions.

AdaptAlp contributed towards Alpine climate change adaptation by generating products and recommendations for natural hazard and disaster management. The project partners set up a multilingual glossary for geological hazards, defined minimum requirements for hazard mapping, analysed impacts on the water regime and created a dataset on climate-induced trends.

Key results

- + Climate predictions for the Greater Alpine Region
- + on_alp_exchange: online platform for the exchange of expertise
- + Alpine-wide youth information campaign 'Biber Bertl'

EU support (ERDF) of over € 2,031,000

Duration 09.2008 - 08.2011

Partners

| | |
|--|----|
| Bayerisches Staatsministerium für Umwelt und Gesundheit | DE |
| Amt der Kärntner Landesregierung | AT |
| Amt der Tiroler Landesregierung | AT |
| Bundesministerium für Land- und Forstwirtschaft, Umwelt und Wasserwirtschaft | AT |
| Bundesamt für Umwelt | CH |
| Bayerisches Landesamt für Umwelt | DE |
| Bundesanstalt für Gewässerkunde | DE |
| Cipra Deutschland e.V. | DE |
| Institut national de recherche en sciences et technologies pour l'environnement et l'agriculture, IRSTEA (ex. CEMAGREF) | FR |
| Pôle Grenoblois d'Études et de Recherche pour la Prévention des Risques Naturels | FR |
| Accademia Europea di Bolzano, EURAC | IT |
| ARPA Piemonte | IT |
| Ministero dell' Ambiente e delle Tutela del Territorio e del Mare | IT |
| Provincia Autonoma di Bolzano - Autonome Provinz Bozen | IT |
| Regione Autonoma Valle d'Aosta | IT |
| Geološki zavod Slovenije | SI |

www.alpine-space.eu/adaptalp



investing in your future



Greetings from the
Alpine Space Programme

AlpEnergy



The programme is co-funded
by the European Regional
Development Fund

AlpEnergy

The Alpine Space is rich in renewable energy sources, but the availability of many of these is intermittent. Generation and consumption must be balanced in time and space to protect the existing grid infrastructure and to make best use of it.

AlpEnergy developed and tested tools in 6 Alpine areas with the aim of balancing power generation and consumption in subsets of the entire system. To that end the partnership developed the concept of Virtual Power Systems. Based on it, long-term scenarios for energy supply have been developed in each partner regions.

Key results

- + Virtual Power Systems White Book
- + Strategic plans to improve the adaptation of consumption to generation
- + Guidelines for Regional Decision Makers and Practitioners

EU support (ERDF) of over € 2,002,000

Duration 07.2008 - 12.2011

Virtual Power Systems as an instrument to promote transnational cooperation and sustainable energy supply in the Alpine Space

Partners

| | |
|--|----|
| Allgäuer Überlandwerk GmbH | DE |
| ALaRI - Advanced Learning and Research Institute all'Università della Svizzera italiana | CH |
| Allgäu GmbH | DE |
| B.A.U.M. Consult GmbH | DE |
| Institut National Polytechnique de Grenoble | FR |
| Rhônealpennergie-Environnement | FR |
| Consorzio BIM Piave Belluno | IT |
| Fondazione Politecnico di Milano, Settore Pianificazione, Ambiente e Energia | IT |
| Provincia di Mantova | IT |
| Regione Autonoma Valle d'Aosta - Region Autonome Vallee d'Aoste, Assessorato Attività Produttive | IT |
| Elektro Gorenjska, podjetje za distribucijo električne energije, d.d. | SI |
| Regionalna razvojna agencija Gorenjske d.o.o. | SI |

www.alpine-space.eu/alpenergy

ALP ENERGY



EUROPEAN TERRITORIAL COOPERATION





Visio
Services

Greetings from the
Alpine Space Programme

ACCESS

ACCESS

Improving Accessibility of Services of General Interest Organisational innovations in rural mountain areas

Throughout the Alpine Space, sparsely populated areas face difficulties in maintaining Services of General Interest (SGI) due to their low profitability and the changing needs of the local population. Social inequalities are increased as people cannot access the SGI due to the absence of transport or the lack of ICT skills.

ACCESS responded to these challenges by proposing innovative solutions to the provision of SGI. The key elements to their success included tailoring the service delivery to the local needs, mixing private, public and voluntary services and involving end-users at all stages.

Key results

- + Perennial mobility solutions (car-sharing, nature park bus, etc.)
- + Delivery of goods (retailer network, home delivery services, etc.)
- + ICT and video services to enable contact with administrations

EU support (ERDF) of over € 1,719,000

Duration 09.2008 - 08.2011

Partners

| | |
|--|----|
| Schweizerische Arbeitsgemeinschaft für die Berggebiete | CH |
| Regione Lombardia, D.G. Industria, Artigianato, Edilizia e Cooperazione .. | IT |
| Amt der Kärntner Landesregierung, Kompetenzzentrum 3 | |
| Landesentwicklung und Gemeinden | AT |
| Amt der Tiroler Landesregierung, Abteilung Raumordnung-Statistik | AT |
| Association pour le développement du Nord Vaudois | CH |
| Regionalverband Südlicher Oberrhein | DE |
| Région Franche-Comté, direction de l'Aménagement du territoire | FR |
| Région Rhône Alpes, Direction générale des services, Mission Montagne | FR |
| Syndicat mixte du Pays du Haut-Jura | FR |
| Syndicat mixte du Pays Horloger | FR |
| GAL Appenino Genovese | IT |

www.alpine-space.eu/access

