

investing in your future



Greetings from the
Alpine Space Programme

ALIAS



The programme is co-funded
by the European Regional
Development Fund

ALIAS

Hospitals in mountain areas serve not only the local residents but also a high number of tourists, especially in the peak season. The varying demand for medical services, along with the problem of language barriers, present significant challenges to the healthcare structures in the Alpine Space.

ALIAS has created a virtual network to facilitate the cooperation between hospitals. The project established a platform offering telemedicine, secure clinical data sharing and the exchange of best practice. This has helped to improve the efficiency and quality of medical treatments regardless of the location of the patients.

Key achievements

- + Virtual Hospital Network (VHN) involving 12 hospitals in six countries
- + Possibility for second opinions from experts in other hospitals
- + Videoconferencing, translations, eLearning and high definition medical image viewer tools

EU support (ERDF) of over € 1,914,000

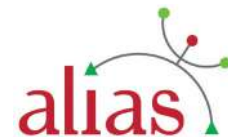
Duration 08.2009 - 10.2012

Alpine Hospitals Networking for Improved Access to Telemedicine Services

Partners

Regione Lombardia	IT
Landeskrankenhaus Villach	AT
Hôpitaux Universitaires de Genève	CH
République et Canton Genève	CH
Klinikum Garmisch-Partenkirchen GmbH	DE
Groupement de Coopération Sanitaire – Système d’Information de Santé en Rhône-Alpes	FR
Institut National des Sciences Appliquées de Lyon	FR
Regione Autonoma Friuli Venezia Giulia	IT
Bolnišnica Golnik - Klinični oddelek za pljučne bolezni in alergijo Golnik	SI
Splošna bolnišnica Izola	SI

www.alpine-space.eu/alias



EUROPEAN TERRITORIAL COOPERATION



investing in your future



Greetings from the
Alpine Space Programme

AlpCheck 2



The programme is co-funded
by the European Regional
Development Fund

AlpCheck 2

The sharp increase in road traffic volumes observed in the last few decades, calls for integrated territorial strategies aimed at improving traffic efficiency and favouring a modal shift, whilst at the same time exploiting the potentials of ICT. AlpCheck2 responded to these challenges by proposing innovative solutions to the provision of traffic monitoring and management services. The project developed, tested and evaluated specific methods and tools for enhancing road transport efficiency, competitiveness and sustainability. It now provides free on-line access to a vast set of traffic data combined with future traffic scenarios and environmental data, which are ready to use for traffic monitoring and management.

Key achievements

- + Transport Decision Support System (with 2 components: transportation planning and traffic management) and 17 traffic scenarios.
- + 1 platform for an on-line freight stock market
- + 1 methodology for evaluating modal shift policies

EU support (ERDF) of over € 2,391,000

Duration 09.2009 - 07.2012

A shared rationale approach towards sustainable transport management and planning in the Alpine regions

Partners

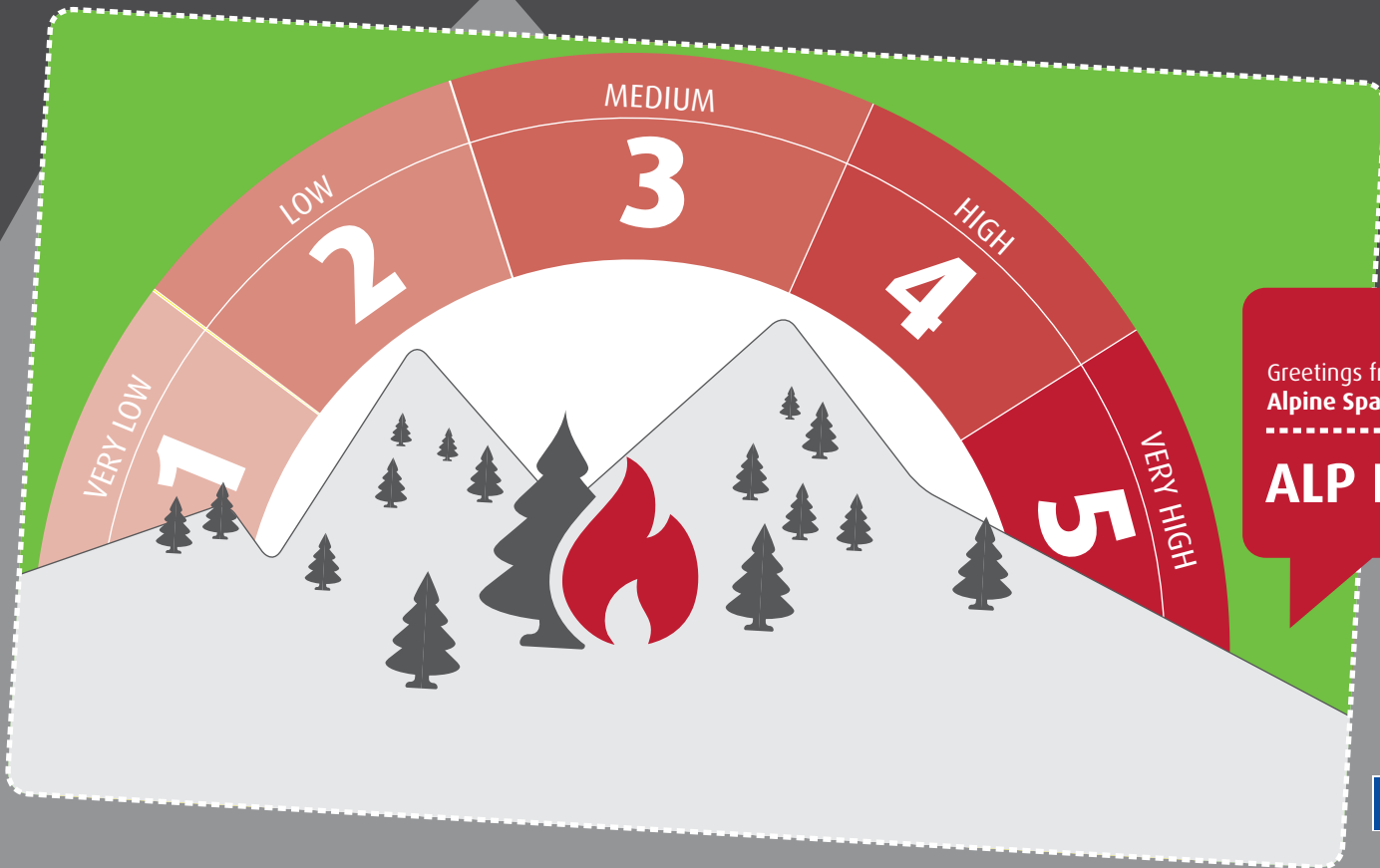
Regione del Veneto	IT
Amt der Kärntner Landesregierung	AT
Oberste Baubehörde im Bayerischen Staatsministerium des Innern	DE
TCI Röhling - Transport Consulting International	DE
Centre d'Etudes Techniques de l'Équipement, CETE Méditerranée	FR
Autorità Portuale di Venezia	IT
Ente Regionale per i Servizi all'Agricoltura e alle Foreste - ERSAF Lombardia	IT
Ministero dell'Ambiente, della Tutela del Territorio e del Mare	IT
Regione Autonoma Valle d'Aosta	IT
Republika Slovenija, Ministrstvo za promet, Direkcija Republike Slovenije za ceste	SI

www.alpine-space.eu/alpcheck2



EUROPEAN TERRITORIAL COOPERATION





Greetings from the
Alpine Space Programme

ALP FFIRS



The programme is co-funded
by the European Regional
Development Fund

ALP FFIRS

Alpine Forest Fire Warning System

As forests represent a substantial percentage of the Alpine Space, common solutions were needed to reduce the impact of forest fires on the Alpine environment.

ALP FFIRS developed the Alpine Forest Fire Danger Scale. This common and harmonised tool is equipped with a warning system that issues a daily alert level bulletin for the Alpine Space. Focusing on prevention and mitigation actions, the project has also increased awareness amongst the general public and the partners have organised transnational and cross-border exercises, for all those involved in fire prevention and fire suppression.

Key achievements

- + Recommendations on forest fire for policy-makers
- + Alpine Forest Fire Danger Scale and common warning system
- + 4 transnational and transregional mutual aid protocols

EU support (ERDF) of over € 2,074,000

Duration 09.2009 - 10.2012

Partners

Agenzia Regionale per la Protezione Ambientale del Piemonte	IT
Universität für Bodenkultur Wien	AT
Zentralanstalt für Meteorologie und Geodynamik	AT
Federazione cantonale ticinese dei corpi pompieri	CH
Eidgenössische Forschungsanstalt für Wald, Schnee und Landschaft, WSL	CH
Sezione forestale cantonale, Cantone Ticino	CH
Technische Universität München	DE
Entente pour la forêt Méditerranéenne – CEREN	FR
Ente Regionale per i Servizi all'Agricoltura e alle Foreste - ERSAF Lombardia	IT
Regione Autonoma Friuli Venezia Giulia	IT
Regione Autonoma Valle d'Aosta	IT
Regione del Veneto	IT
Regione Piemonte	IT
Gozdarski inštitut Slovenije	SI

www.alpine-space.eu/alpffirs



CLIMATE
CHANGE



COMPETITIVENESS
& INNOVATION
OF SMES



INCLUSIVE
GROWTH



LOW-CARBON
ECONOMY AND
ENERGY EFFICIENCY



RESOURCE EFFICIENCY
AND ECOSYSTEM
MANAGEMENT



SUSTAINABLE
TRANSPORT
& MOBILITY

EUROPEAN TERRITORIAL COOPERATION



investing in your future



Greetings from the
Alpine Space Programme

AlpHouse



The programme is co-funded
by the European Regional
Development Fund

AlpHouse

The Alpine Space is shaped by unique settlement structures, which are key to its attractiveness. However, the traditional architecture is being threatened by negligence and urban sprawl.

AlpHouse tackled three challenges in one: energy efficiency, cultural heritage and competitiveness of SMEs. The project explored the principles of Alpine architecture and combined these with top level and energy efficient renovation techniques. Using local materials and employing local SMEs, AlpHouse has strengthened the market for energy efficient and style appropriate renovation.

Key achievements

- + Training for craftsmen, architects, planners and decision-makers (36 training modules reaching almost 600 participants)
- + Pilot construction sites in 9 regions for analyses, training and public events
- + Exchange of good practice via a travelling exhibition

EU support (ERDF) of over € 1,870,000

Duration 09.2009 - 12.2012

Alpine Building Culture and Ecology

Partners

Handwerkskammer für München und Oberbayern	DE
BAU Akademie Lehrbauhof Salzburg	AT
Energieinstitut Vorarlberg	AT
Research Studios Austria	AT
Bayerische Architektenkammer	DE
Chambre de Commerce et d'Industrie de la Drôme	FR
Ente Regionale per i Servizi all'Agricoltura e alle Foreste - ERSAF Lombardia	IT
Regione Autonoma Valle d'Aosta	IT
Regione del Veneto	IT

www.alpine-space.eu/alpouse

AlpHouse.eu
tradition | competence | innovation



EUROPEAN TERRITORIAL COOPERATION



investing in your future



Greetings from the
Alpine Space Programme
.....
COMUNIS



The programme is co-funded
by the European Regional
Development Fund

COMUNIS

Communities in the Alps often have little land available for commercial site development due to natural restrictions, and the few areas that remain are highly sought-after due to the diverse utilisation demands.

COMUNIS has contributed to the setting-up of a common strategic perspective on 'commercial location development' by supporting the creation and development of municipality networks. In practice, the project tackled the problem of uncoordinated and individual commercial development in 7 pilot projects. Some of these produced permanent cooperation structures between the participating municipalities.

Key achievements

- + Legal cooperation agreements between municipalities in 3 pilot regions
- + Guidelines: practical handbook for inter-municipal cooperation
- + Installation of management structures in selected pilot areas

EU support (ERDF) of over € 1,377,000

Duration 07.2009 - 06.2012

Inter-municipal cooperation for the strategic steering of SME-oriented location development in the Alpine Space

Partners

HES-SO Valais, Institut Economie et Tourisme	CH
Chambre de Commerce et d'Industrie de Lyon	FR
Regionalentwicklung Vorarlberg	AT
Association Suisse pour le Service aux Régions et Communes	CH
Canton du Valais	CH
Bosch & Partner GmbH	DE
Stadt Sonthofen	DE
EURAC Accademia Europea di Bolzano	IT
Langhe Monferrato Roero soc.cons. a.r.l.	IT
Ministero dell'Ambiente, della Tutela del Territorio e del Mare	IT
BSC, Poslovno podporni center, d.o.o., Kranj	SI

www.alpine-space.eu/comunis



EUROPEAN TERRITORIAL COOPERATION



investing in your future



Greetings from the
Alpine Space Programme

DEMOCHANGE



The programme is co-funded
by the European Regional
Development Fund

DEMOCHANGE

Demographic change is a major driving force throughout Europe. People's needs vary, according to age and location in the mountainous areas.

DEMOCHANGE addressed the challenges of a changing population structure in the Alpine region and identified local key issues in 10 model regions. Through public participation, the project created a new governance process to develop adaptation strategies with regard to spatial planning and regional development. Twenty seven pilot actions tested the implementation of these strategies. Transnational roadmaps and policy recommendations in the Alpine Space have been developed.

Key achievements

- + Strategies to cope with demographic change in the Alpine Space
- + Regional reports for the model regions with adaptation strategies
- + www.swottool.de to prepare SWOT analyses

EU support (ERDF) of over € 1,903,000

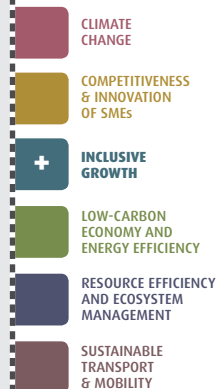
Duration 10.2009 - 11.2012

Demographic change in the Alps: adaptation strategies for spatial planning and regional development

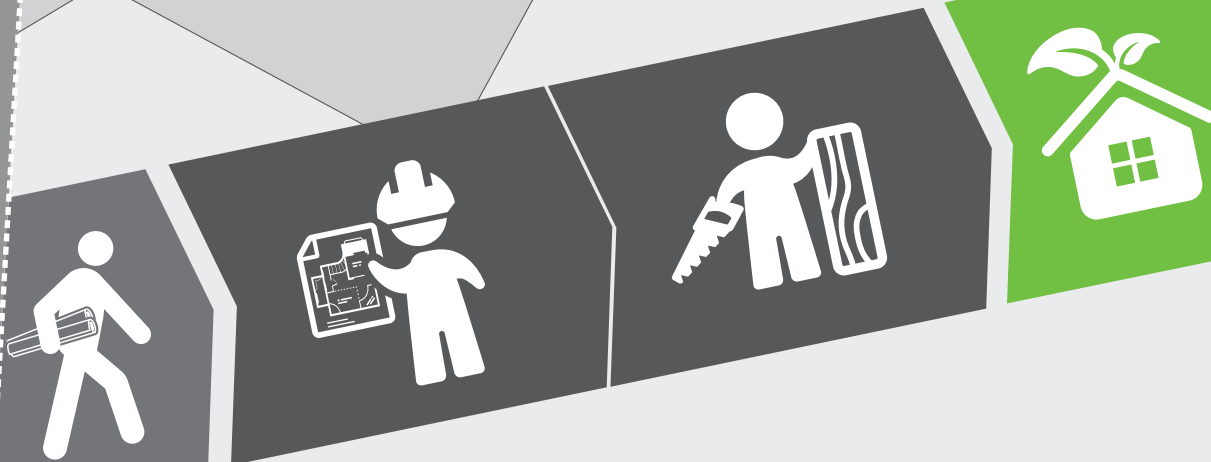
Partners

Hochschule für Angewandte Wissenschaften - FH München	DE
Amt der Salzburger Landesregierung	AT
Universität Salzburg	AT
Hochschule Luzern - Soziale Arbeit	CH
Interface Institut für Politikstudien	CH
Zentralschweizer Konferenz der Volkswirtschaftsdirektoren	CH
Landkreis Oberallgäu	DE
Landratsamt Garmisch-Partenkirchen	DE
Libera Università di Bolzano, Freie Universität Bozen	IT
Regione Autonoma Valle d'Aosta	IT
UNCEM - Unione Nazionale Comuni Comunità Enti Montani Piemonte	IT
Razvojna agencija Zgornje Gorenjske	SI
Urbanistični inštitut Republike Slovenije	SI

www.alpine-space.eu/demochange



investing in your future



Greetings from the
Alpine Space Programme

ENERBUILD



The programme is co-funded
by the European Regional
Development Fund

ENERBUILD

40% of CO₂ emissions come from the construction sector. Energy efficient construction is therefore a key factor in climate change prevention.

ENERBUILD focused on strengthening SMEs in the building sector and on developing tools relating to the energy production of buildings. Craftsmen and architects received training on new techniques for ecological building. Developments have included the integration of photovoltaics in buildings, a participation model on green power plants for local supply and concepts for heat supply. A transnational standardisation initiative for the assessment of ecological construction is on-going.

Key achievements

- + 3 publications on examination and assessment of buildings
- + 4 publications and 1 tool on energy efficiency
- + Publications and tools on E-Producing (4), innovation (1) and education (1)

EU support (ERDF) of over € 2,134,000

Duration 07.2009 - 06.2012

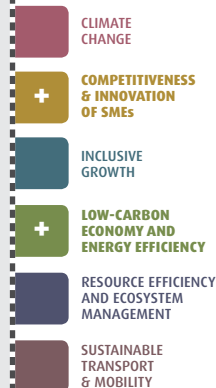
ENERgy Efficiency and Renewable Energies in the BUILDing Sector

Partners

Regionalentwicklung Vorarlberg	AT
Energieagentur Obersteiermark	AT
NENA - Network Enterprise Alps	AT
Tiroler Zukunftsstiftung	AT
Zentralschweizer Volkswirtschaftsdirektorenkonferenz vertreten durch das Justiz- und Sicherheitsdepartement des Kantons Luzern	CH
Fachhochschule Rosenheim	DE
RAEE Rhônalpénergie-Environnement	FR
EURAC Accademia Europea di Bolzano	IT
Provincia Autonoma di Trento	IT
Provincia di Alessandria	IT
Regione Piemonte	IT
TIS Techno Innovation South Tyrol	IT
Posoški razvojni center	SI

www.alpine-space.eu/enerbuild

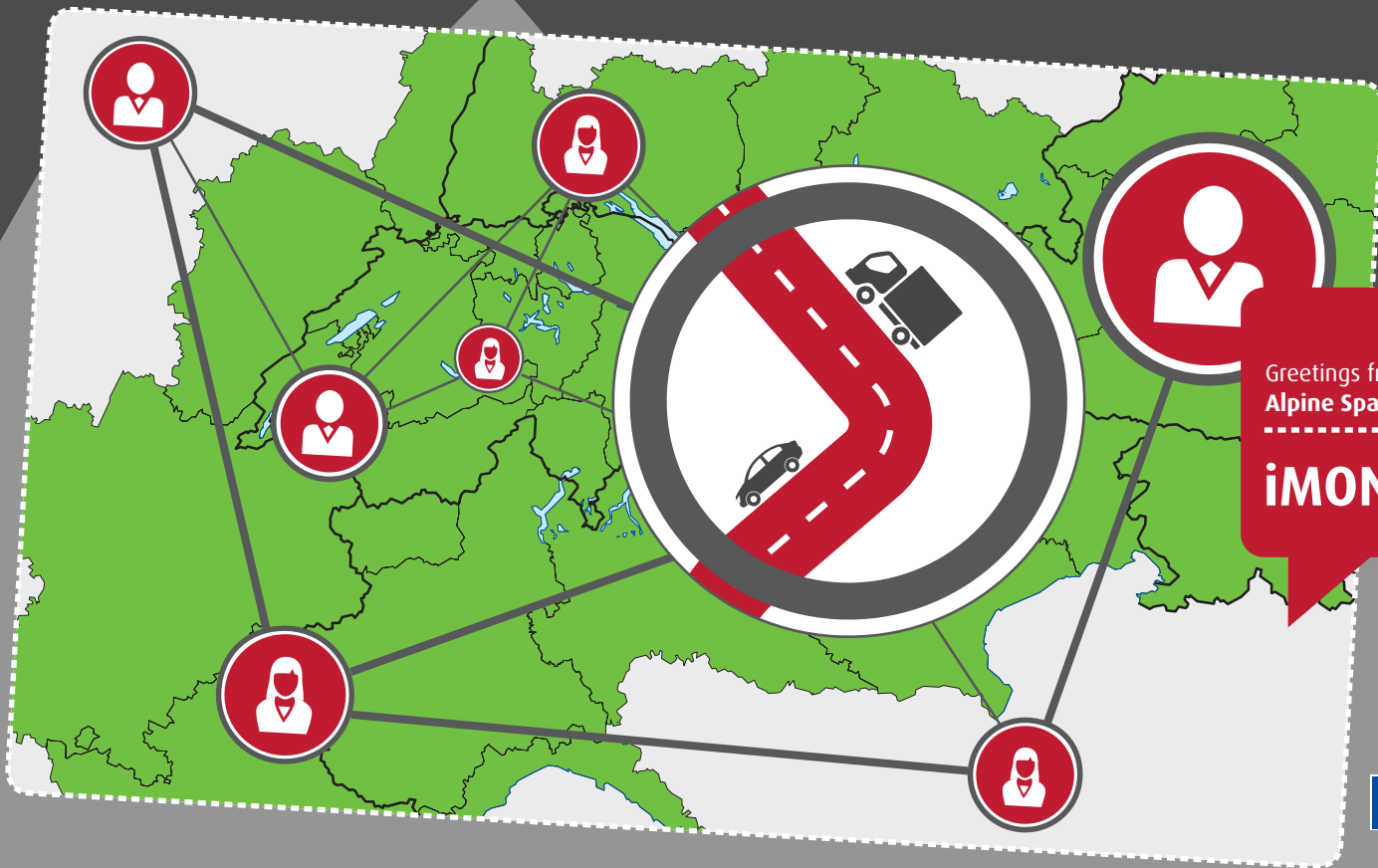
ENERBUILD



EUROPEAN TERRITORIAL COOPERATION



investing in your future



Greetings from the
Alpine Space Programme

iMONITRAF!



The programme is co-funded
by the European Regional
Development Fund

iMONITRAF!

The increase of transalpine traffic requires coordinated measures by Alpine regions to reduce transport related impacts and limit distributional effects between transport corridors. iMONITRAF! has developed monitoring and evaluation instruments (DPSIR-system). A "Best Practice Guide" presents existing regional measures and their effectiveness. The project also developed "decision-making-aids" to help transfer best measures to other regions. A report on "Innovative Approaches" gives recommendations for encouraging the use of technologies and potential steering instruments for transalpine road freight. Most project partners and additional organisations agreed to carry on with the cooperation in the form of a coordination point for at least 4 years after the end of the EU co-funding.

Key achievements

- + Common transport strategy & political network of Alpine regions
- + WebGIS database with 12 core indicators
- + Decision-making tool with policy scenarios

EU support (ERDF) of over € 1,016,000

Duration 07.2009 - 06.2012

Implementation of MONITRAF - Monitoring of road traffic related effects in the Alpine Space and common measures

Partners

Zentralschweizer Regierungskonferenz der Kantone Luzern, Uri, Schwyz, Obwalden, Nidwalden, Zug	CH
Amt der Tiroler Landesregierung	AT
Cantone Ticino	CH
Région Rhône-Alpes	FR
ARPA Friuli Venezia Giulia - Agenzia Regionale per la Prevenzione e Protezione Ambientale	IT
ARPA Piemonte - Agenzia Regionale per la Prevenzione e Protezione Ambientale	IT
ARPA Valle d'Aosta - Agenzia Regionale per la Prevenzione e Protezione Ambientale	IT
Autonome Provinz Bozen - Südtirol / Provincia Autonoma di Bolzano - Alto Adige	IT
EURAC Accademia Europea di Bolzano	IT
Regione Autonoma Valle d'Aosta	IT

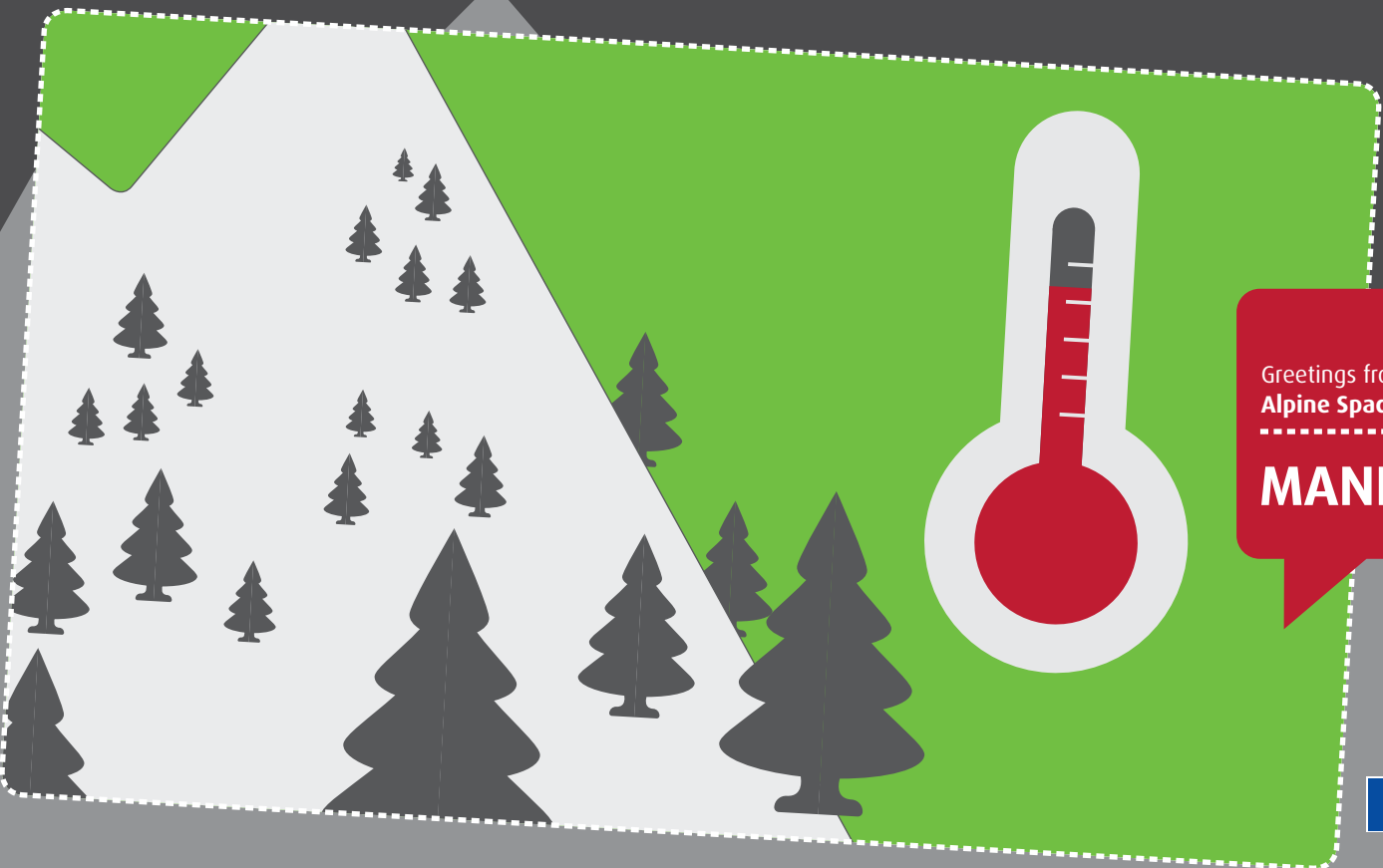
www.alpine-space.eu/imonitraf



EUROPEAN TERRITORIAL COOPERATION



investing in your future



Greetings from the
Alpine Space Programme

MANFRED



The programme is co-funded
by the European Regional
Development Fund

MANFRED

Management strategies to adapt Alpine Space forests to climate change risks

Natural environments like forests are the first to experience the direct impacts of climate change. Transnational common solutions are needed in the Alpine Space.

MANFRED brought forestry practitioners together throughout the Alps to share their tactics for dealing with extreme events. Together, they developed adaptive forest management strategies and tools to support on-the-ground forestry practice. They also implemented improved management practices in transnational case study areas. Finally, the project downscaled global climate models to the Alpine regional level.

Key achievements

- + The 22nd Century book on forestry in the Alps
- + Handbook on stress events in the Alpine forests
- + Online database for extreme events

EU support (ERDF) of over € 2,412,000

Duration 08.2009 - 07.2012

Partners

Forstliche Versuchs- und Forschungsanstalt Baden-Württemberg	DE
AIT Austrian Institute of Technology GmbH	AT
Bundesforschungs- und Ausbildungszentrum für Wald, Naturgefahren und Landschaft	AT
Stand Montafon - Forstfonds	AT
Bundesamt für Umwelt (BAFU)	CH
Eidgenössische Forschungsanstalt für Wald, Schnee und Landschaft, WSL	CH
Bayerische Landesanstalt für Wald und Forstwirtschaft	DE
IRSTEA, (ex-Cemagref) groupement de Grenoble	FR
Office National des Forêts	FR
Ente Regionale per i Servizi all'Agricoltura e alle Foreste - ERSAF Lombardia	IT
Ministero dell'Ambiente, della Tutela del Territorio e del Mare	IT
Regione Autonoma Valle d'Aosta	IT
Università Cattolica del Sacro Cuore	IT
Gozdarski inštitut Slovenije	SI
Zavod za gozdove Slovenije	SI

www.alpine-space.eu/manfred



EUROPEAN TERRITORIAL COOPERATION



investing in your future



Greetings from the
Alpine Space Programme

PARAMount



The programme is co-funded
by the European Regional
Development Fund

PARAMount

imPROved Accessibility: Reliability and security of Alpine transport infrastructure related to mountainous hazards in a changing climate

As a result of climatic trends, the vulnerability of transport infrastructure to natural hazards has increased, but transport and accessibility need to be secure and ensured in the Alps.

Within the framework of PARAMount, existing tools and practices for assessing avalanches, rock fall and debris flow were improved and tools on the visualization of natural hazard impacts were developed and assessed. In addition, hazard early warning systems were installed in the pilot areas, increasing the reliability of risk forecast. The project established several risk dialogue groups with experts across the whole Alpine region.

Key achievements

- + Risk Management and Implementation Handbook
- + Decision support tool for natural hazards
- + Forecast system guidelines - debris flow

EU support (ERDF) of over € 2,033,000

Duration 09.2009 - 11.2012

Partners

Bundesministerium für Land- und Forstwirtschaft, Umwelt und Wasserwirtschaft	AT
Bundesforschungs- und Ausbildungszentrum für Wald, Naturgefahren und Landschaft	AT
ÖBB-Infrastruktur AG, Strecken- und Bahnhofsmanagement	AT
Bundesamt für Umwelt (BAFU)	CH
Eidgenössische Forschungsanstalt für Wald, Schnee und Landschaft, WSL	CH
IRSTEA, (ex-Cemagref) groupement de Grenoble	FR
ARPA Piemonte- Agenzia Regionale per la Prevenzione e Protezione Ambientale	IT
ARPA Veneto- Agenzia Regionale per la Prevenzione e Protezione Ambientale	IT
Autonome Provinz Bozen - Südtirol / Provincia Autonoma di Bolzano - Alto Adige	IT
Provincia Autonoma di Trento	IT
Università di Padova	IT
Podjetje za urejanje hudournikov d.d.	SI
Univerza v Ljubljani	SI

www.alpine-space.eu/paramount



PARAMount



CLIMATE CHANGE



COMPETITIVENESS & INNOVATION OF SMES



INCLUSIVE GROWTH



LOW-CARBON ECONOMY AND ENERGY EFFICIENCY



RESOURCE EFFICIENCY AND ECOSYSTEM MANAGEMENT

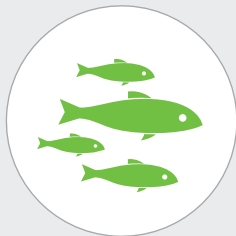


SUSTAINABLE TRANSPORT & MOBILITY

EUROPEAN TERRITORIAL COOPERATION



investing in your future



Greetings from the
Alpine Space Programme

SHARE



The programme is co-funded
by the European Regional
Development Fund

SHARE

Hydropower (HP) is the most important renewable resource for electricity production in the Alpine area, but creates serious environmental impacts. RES-e directives promote the production of renewable electricity, whereas the Water Framework Directive obliges Member States to reach a “good” ecological status of water bodies, thus limiting the exploitation of hydropower.

In 11 pilot areas, the SHARE project has developed, promoted and tested a decision support system for merging river ecosystem services and HP requirements, on an unprejudiced basis, using a Multi Criteria Analysis (MCA) methodology, which is adaptable to local cases.

Key achievements

- + Toolkit for the planning and assessing of HP facilities taking into account ecosystems services
- + Guidelines on the integration of MCA procedures in normative texts
- + Indicators database to evaluate the effect of HP on water bodies

EU support (ERDF) of over € 2,052,000

Duration 08.2009 - 07.2012

Balancing river ecosystems and hydropower requirements

Partners

ARPA Valle d'Aosta - Agenzia Regionale per la Prevenzione e Protezione Ambientale	IT
Amt der Steiermärkischen Landesregierung	AT
Technische Universität Graz	AT
Universität Innsbruck	AT
Universität Stuttgart	DE
AEM, Association Européenne des Elus de Montagne	FR
GERES, Groupe Energies Renouvelables, Environnement et Solidarités	FR
Université Joseph Fourier Grenoble	FR
ARPA Veneto - Agenzia Regionale per la Prevenzione e Protezione Ambientale	IT
Regione Piemonte	IT
RSE S.p.A., Ricerca Sistema Energetico	IT
E-zavod	SI
Univerza v Ljubljani	SI

www.alpine-space.eu/share



EUROPEAN TERRITORIAL COOPERATION



investing in your future



Greetings from the
Alpine Space Programme

SILMAS



The programme is co-funded
by the European Regional
Development Fund

SILMAS

Sustainable Instruments for Lakes Management in the Alpine Space

Alpine lakes are attractive for a wide range of sectors, from tourism to industry, and provide a privileged location for residence. However, this particularly fragile natural environment, its water resources and its biodiversity must all be protected.

SILMAS developed a range of tools for practitioners and policy-makers to ensure the sustainable management of Alpine lakes and their catchment areas. At the same time, the project focused some of its activities on school children and tourists, providing a wealth of educational material for all target audiences.

Key achievements

- + 7 guideline documents on lake management
- + Web-GIS platform: "Alpine lakes database"
- + "Lake Adventures", an educational virtual software

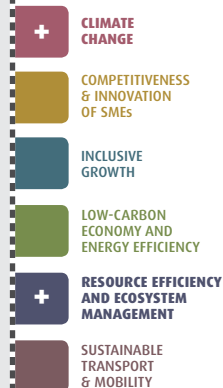
EU support (ERDF) of over € 2,478,000

Duration 09.2009 - 08.2012

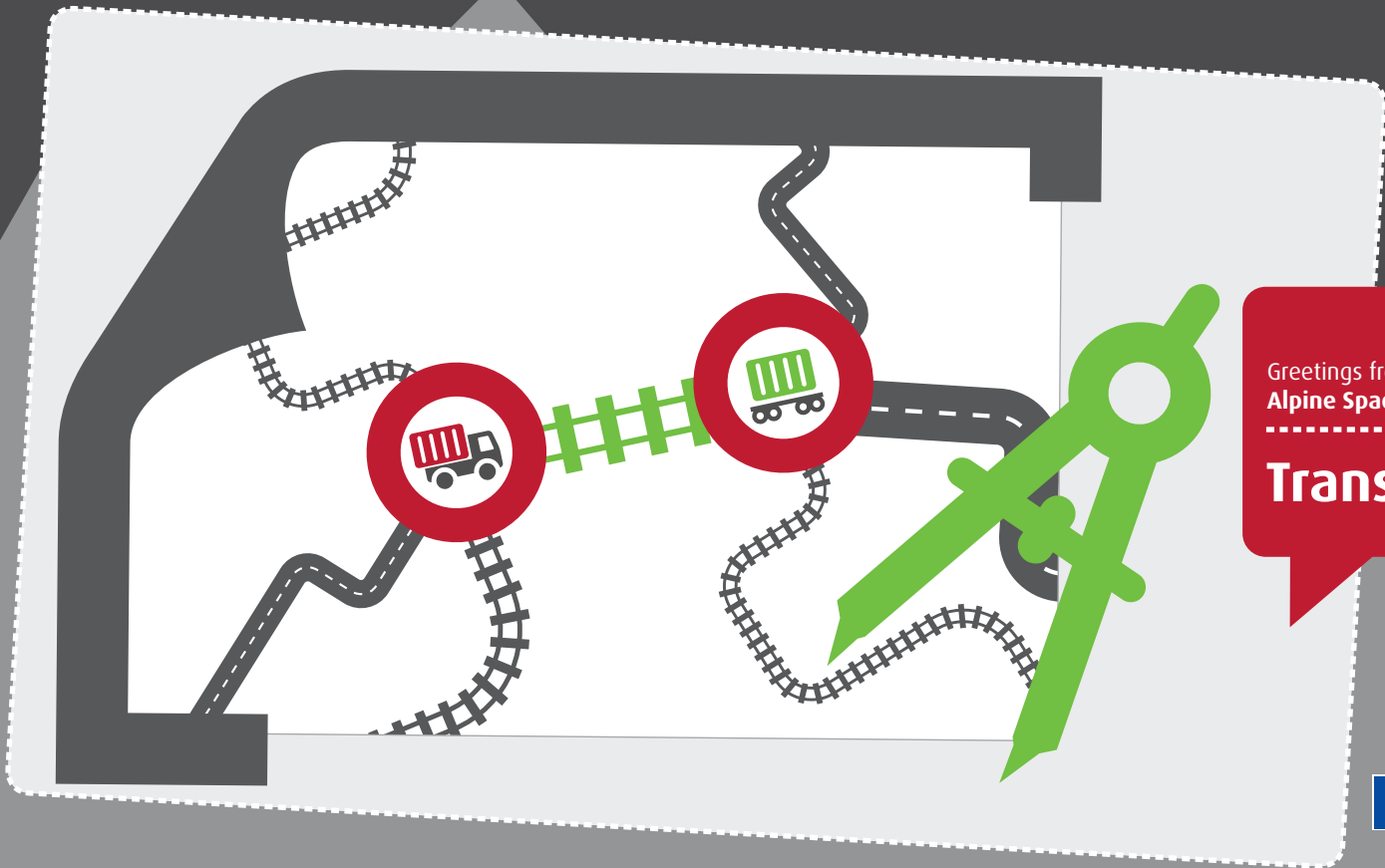
Partners

Région Rhône-Alpes	FR
Amt der Kärntner Landesregierung	AT
Joanneum Research Forschungsgesellschaft mbH	AT
Universität Salzburg	AT
Institut für Seenforschung Landesanstalt für Umwelt, Messungen und Naturschutz Baden-Württemberg	DE
Comité intersyndical pour l'assainissement du lac du Bourget	FR
Région Provence-Alpes-Côte d'Azur	FR
Syndicat Mixte du lac d'Annecy	FR
Agenzia Provinciale per la Protezione dell'Ambiente di Trento	IT
ARPA Piemonte - Agenzia Regionale per la Prevenzione e Protezione Ambientale	IT
Distretto Turistico dei Laghi	IT
Ente Regionale per i Servizi all'Agricoltura e alle Foreste - ERSAF Lombardia	IT
Regione Lombardia	IT
Nacionalni inštitut za biologijo	SI
Univerza v Novi Gorici	SI

www.alpine-space.eu/silmas



investing in your future



Greetings from the
Alpine Space Programme
.....
Transitects



The programme is co-funded
by the European Regional
Development Fund

Transitects

Transalpine Transport Architects

The Alps are both a transit area with growing traffic and an obstacle in the European transport network.

Transitects developed attractive rail alternatives to mitigate the negative effects of traffic, taking important steps to strengthen the attractiveness and functionality of the Alpine railway system for freight transport. The project devised numerous measures for the development of transalpine pilot products for combined transport. It also developed pilot projects for unaccompanied and accompanied train services, as well as concepts for improving the functionality of intermodal nodes.

Key achievements

- + 13 concrete ideas for unaccompanied train services
- + 4 concepts for accompanied transport services
- + 3 concepts for functionality improvements of intermodal nodes

EU support (ERDF) of over € 2,439,000
Duration 07.2009 - 09.2012

Partners

Deutscher Verband für Wohnungswesen, Städtebau und Raumordnung e. V.	DE
Amt der Kärntner Landesregierung	AT
Amt der Salzburger Landesregierung	AT
Amt der Tiroler Landesregierung	AT
Bundesministerium für Verkehr, Innovation und Technologie	AT
Gemeinsame Landesplanungsabteilung der Länder Berlin und Brandenburg	DE
Regionalverband Donau-Iller	DE
Wirtschaftsförderung Region Stuttgart GmbH	DE
ALOT scarl - Agenzia della Lombardia orientale per i trasporti e la logistica	IT
EURAC Accademia Europea di Bolzano	IT
Ministero dell'ambiente e della tutela del territorio e del mare	IT
Regione Autonoma Friuli Venezia Giulia	IT
Regione Lombardia	IT
Regione del Veneto	IT
Unioncamere del Veneto – Eurosportello del Veneto	IT
Ministrstvo za infrastrukturo in prostor	SI

www.alpine-space.eu/transitects



- CLIMATE CHANGE
- COMPETITIVENESS & INNOVATION OF SMES
- INCLUSIVE GROWTH
- LOW-CARBON ECONOMY AND ENERGY EFFICIENCY
- RESOURCE EFFICIENCY AND ECOSYSTEM MANAGEMENT
- SUSTAINABLE TRANSPORT & MOBILITY**

EUROPEAN TERRITORIAL COOPERATION

