

Interreg



Co-funded by  
the European Union

Alpine Space

ADAPTNOW

Newsletter #3

April 2024

## Climate resilient and green Alpine region

IN THIS EDITION .....

**Dear Reader,**

*Welcome to the third edition of the ADAPTNOW Newsletter. This newsletter contributes to the commitment towards a more sustainable, carbon neutral, climate resilient and green Alpine region and we hope that you find it just as interesting as we do. The consortium of 12 project partners will focus their efforts in implementing and evaluating the adaptive capacity of pilots within predominant hazards in the Alps: Heatwaves, Heavy rains/floods and Gravitation/landslides.*

*In these pages we would like to highlight some achievements of our project partners and some of our news.*

***Follow us over the next years as we share experience, solutions, and good practice.***

[www.alpine-space.eu/project/adaptnow/](http://www.alpine-space.eu/project/adaptnow/)

- Activities in pilot areas
- Apply to Open Call to select promoting organizations
- News & events
- Synergy and cooperation
- News on the website
- Partners & Contacts

### ADAPTNOW AT A GLANCE

The main objective is to increase the risk management and adaptation capacities of Highly Affected and Exposed Alpine Territories (HAET) through different approaches coordinated by regional and local public authorities with the support of sectoral agencies and research institutes.

**DURATION:**  
11/01/2022 – 30/10/2025

**ERDF:** €1.525.987,54

Read about ADAPTNOW at:

[www.alpine-space.eu/project/adaptnow/](http://www.alpine-space.eu/project/adaptnow/)



## We continue with the activities in pilot areas

ADAPTNOW brings together regional sectoral agencies and research centers from 5 AS countries (France, Italy, Austria, Germany and Slovenia) to support Pilot Actions and help set up and run Climate Services in support of 7+ Highly Affected and Exposed Alpine Territories (HAET) in the Alps. Their efforts will be focused in implementing and evaluating the adaptive capacity of pilots within predominant hazards in the Alps: Heatwaves, Heavy rains/floods and Gravitational/landslides. Key sectors have been identified to assess related impacts: Urban infrastructure, Forestry, Tourism and Health. You'll find out below some of our pilots' updates and recent activities.

### ***Grenoble-Alpes Métropole***

Through ADAPTNOW project, Grenoble-Alpes Métropole wish develop and improve the decision support tools, highlight, decline and transfer the tools to the local stakeholders and ADAPTNOW European partners and lead a local community of risks with the technicians and local rulers.

Linked with the Major Risk Institute, GAM organized an exercise on October 3rd focused on addressing flash floods to assess the effectiveness of the Gradual Anticipation Plan (GAP). The simulation engaged the municipalities of Gières and Saint-Martin-D'Hères, along with GAM's GEMAPI service. The scenario simulated heavy winter rainfall coupled with rapid snowmelt, leading to a rare flash flood from the mountain watercourse "the Sonnant." To ready the municipalities, GAM conducted multiple training sessions to assist them in adapting the GAP into their Communal Safeguard Plan.



### ***Comunità Comprensoriale Val Pusteria***

#### ***Development of measures in the forestry and tourism sectors in the Puster Valley pilot***

After extensive consultation with various stakeholders through preliminary interviews and the stakeholder workshop held in Brunico on July 19th, the following adaptation needs for the tourism and forestry sectors became evident:

- The need to raise awareness of the impacts of climate change (CC) and provide expandable knowledge about risks and climate change adaptation (CCA) options in the tourism sector
- The need for additional resources and information to improve forest management in the context of CCA (especially of protective forests) among fragmented forest owners.

Through exchanges with key actors from both sectors, the subsequent design of the two measures is being developed, thereby jointly defining the structure, content, and formats of the pilot measures. In addition, external experts will be involved in the detailed planning phase of the measures.



Together with various representatives of the tourism sector (both summer and winter tourism), a roadmap for enhancing climate change adaptation is to be developed in the tourism sector, focusing on the process of adapting international best practice examples to the local context and respective climate risks.

In the forestry sector, the focus is on training foresters through a workshop and developing corresponding materials to provide knowledge on climate-resilient reforestation. As key multipliers, they will pass this on to the actual target group, the forest owners, with the aim of considering future climate risks in today's planning decisions.

While the orientation of the measures to the natural local conditions is fundamental for successful implementation, the focus of the output is not on the specific result but rather on the process of the measure (e.g., the necessary steps to assess the status quo, identify suitable measures, and plan steps for their implementation), so to enable replication in other contexts and thus achieve the broadest possible impact.

The first outputs of this ongoing process from the identification of CCA capacity to the co-designing CCA tools was also presented at two scientific conferences: at the XIV National Conference of the Italian Association for Environmental Sociology in Siracusa in September 2023, and at the XI Conference of the Italian Society for Climate Sciences in Milan in November 2023.



### **Chivasso Municipality**

#### ***Chivasso Climate Resilient Master Plan”: a good practice developed***

The Higher Institute for Environmental Protection and Research (ISPRA), Italian public research body, as part of the GELSO Project (Local Management for Sustainability), whose goal is to identify, evaluate and disseminate good sustainability practices implemented in Italy, has published the experience of the Municipality of Chivasso, pilot case study implemented by iiSBE Italia R&D in ADAPTNOW, in reviewing its City Master Plan.

Namely, within the Italian Climate Change Adaptation Platform it has been included the on-going experience of Chivasso municipality in developing its Climate Resilient Master Plan.



Through a specific process concerning the identification and mapping of the climate risks affecting the area (heat waves, intense rainfall, drought, etc.), the Municipality of Chivasso, together with iSBE Italia, are developing the **new Master Plan of the city including adaptation measures** at urban and micro-urban scale, in relation to the sectors of interest (urban infrastructure and health).



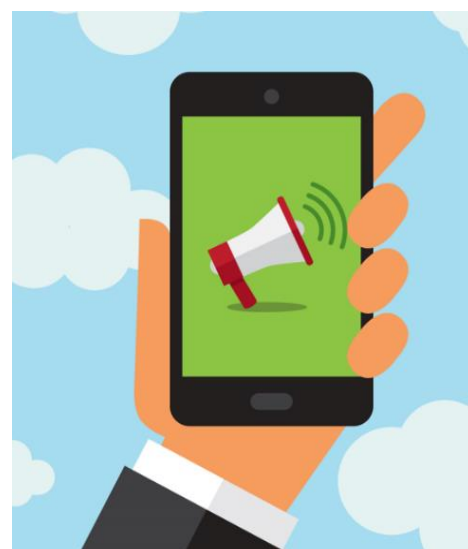
The process foresees **the use of GIS data and indicators able to measure the effectiveness of the adaptation measures** implementable within a Strategic Environmental Assessment and the setting up of a monitoring system for them is also guaranteed. This methodology is replicable and transferable to any Italian municipal context.

## Apply to ADAPTNOW Open Call to select Promoting Organizations

[The Open Call to select Promoting Organizations in Alpine territory](#) to participate in a joint exchange with one of ADAPTNOW expert partners in climate adaptation and risk mitigation in order to test the replicability of tools and practices, climate service and policy recommendation to ensure that Highly Affected and Exposed Alpine Territories (HAET) in the Alps can strengthen their adaptation capacities has been published and a short on line [QUESTIONNAIRE](#) is available to fill it up by **May 15<sup>th</sup> 2024**. You can find more information on the website [HERE](#).

ADAPTNOW will offer a joint exchange tailor made to specific challenges and based on the needs and interests of the candidates. Selected Promoting Organization will benefit from:

- matching with an ADAPTNOW partner based on their requirements,
- an in-depth observation through an onsite visit at ADAPTNOW partner's premises,
- onsite coaching support at PO's premises from an ADAPTNOW partner,
- follow up webinar will be available to promoting organization.



**The list of selected organizations will be communicated on the project website. So, stay tuned and follow us!**



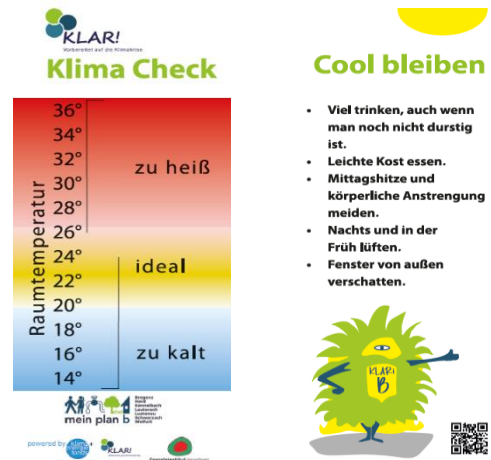
## ADAPTNOW News & Events

### Sun detectives are spreading in Vorarlberg

This year in 2024 a partner Energieinstitut Vorarlberg is reaching 50 kindergarten and school groups with their Sun Detectives awareness-raising programme.

After their test run in 2023 with 3 kindergarten groups, 4 primary school classes and 3 secondary school classes, the Sun Detectives are spreading in Vorarlberg. Schools in two climate change adaptation regions were approached and are participating in the programme with 50 classes and over 700 children in 2024. The children's measurements led to interesting discussions with the municipal staff during last year's test run, as the data obtained enabled us to address specific cases of overheating that could also be remedied.

A classic example is a classroom on the west side of the building where the children measure 30 degrees Celsius in the morning in May. The simple solution: close the sun blinds when leaving the classroom at midday and ensure sufficient air exchange at night. The room overheats due to the low sun in the west in the evening and has to be cooled down overnight.



### ADAPTNOW at the World Sustainable Energy Days 2024



The World Sustainable Energy Days (WSED) are a leading conference on the energy transition and climate neutrality. The event was held from 5 to 8 March 2024 in Wels/Austria.

The whole energy transition community met in Wels – over 650 experts from 60 countries participated in the conference. “Energy transition now – fast, smart, resilient!” This was the motto of the World Sustainable Energy days 2024.

ADAPTNOW with the ENERGAP team was present at the poster presentation, which was an integrated part of the WSED.

Around 70 companies and organisations took this opportunity to showcase their energy efficiency and renewable energy projects.

### ADAPTNOW at the INTERPRAEVENT conference in Austria in June 2024

INTERPRAEVENT is a professional congress focusing on preventing natural disasters. The conference bridges research and practice, fostering discussions on the latest developments in natural hazard prevention. The exchange of ideas and experiences is central to INTERPRAEVENT's mission.

In 2024, the conference will be held in Austria for the ninth time and for the first time in Vienna, from June 10-13. The theme will address the challenge of managing risks under global warming, recognizing the need for sustainable social adaptation processes in the face of extreme natural disasters. The ADAPTNOW will contribute with scientific contribution.



## Project meeting in Genoa, Italy

From 7th until 9th of November 2023, project partners met at the second project meeting in Genoa in Italy to review the progress of the project. On the second and third day the workshops and study visits were organized. All project partners were present. On the 2nd workshop Methods, tools, financial and funding mechanisms for the integrated implementation of climate adaptation measures were presented and discussed.



## ADAPTNOW meets ReMED Project Synergy and cooperation promoting climate change adaptation

On February 21st, iiSBE Italia, partner of ADAPTNOW had the kick-off meeting of ReMED “Towards Climate Resilient Mediterranean Cities”, an Interreg Euro-Med Project promoting climate change adaptation and disaster risk prevention, resilience, taking into account eco-system-based approaches.

iiSBE Italia R&D is a technical partner of ReMED, together with the Municipality of Genoa; the sharing of knowledge acquired so far in ADAPTNOW on climate adaptation, has been made available to ReMED consortium in order to create synergy and cooperation since the very beginning between the two EU Project.

ReMED indeed, will develop an innovative set of affordable tools, along with an overarching decision support framework, to help cities in:

- assessing and understanding the level of climate risk at urban and building scale
- designing optimal climate adaptation measures in relation to local conditions
- implementing climate adaptation measures through the most suitable policy instruments
- monitoring and evaluating the results of adaptation measures over time.



**Stay tuned to see the progress of this mutual exchange and support!**

## What is new on the ADAPTNOW website?

Our project website was launched in January. It is constantly updated with new information.

Follow us on <https://www.alpine-space.eu/project/adaptnow/>



## Project partners

- Auvergne-Rhône-Alpes Energy Environment Agency
- Regional Agency for Infrastructure development, building Renovation and Energy of Liguria – IRE spa
- EURAC Research
- National Research Institute for Agriculture, Food and the Environment
- University of the Bundeswehr Munich
- iiSBE Italia R&D S.r.l. - I.S
- Energy and Environmental Centre Allgaeu
- Energy Institute Vorarlberg
- Energy and Climate Agency of Podravje
- Municipality of Genoa
- Municipality Selnica ob Dravi
- Grenoble-Alps Metropole



## LET'S STAY IN CONTACT!



<https://www.linkedin.com/groups/12746578/>

**Rogelio Bonilla**- Auvergne-Rhône-Alpes Energy Environment Agency (Lead partner)  
[rogelio.bonilla@auvergnerhoealpes-ee.fr](mailto:rogelio.bonilla@auvergnerhoealpes-ee.fr)



**Noemie Bichon** - Auvergne-Rhône-Alpes Energy Environment Agency  
[noemie.bichon@auvergnerhonealpes-ee.fr](mailto:noemie.bichon@auvergnerhonealpes-ee.fr)

**Vlasta Krmelj** – Energy and Climate Agency of Podravje (Communication coordinator)  
[vlasta.krmelj@energap.si](mailto:vlasta.krmelj@energap.si)



This Newsletter provides information about the Interreg Alpine Space project ADAPTNOW as well as other information about news, events and initiatives in thematic areas covered by or connected with the project and the Alpine Space programme.