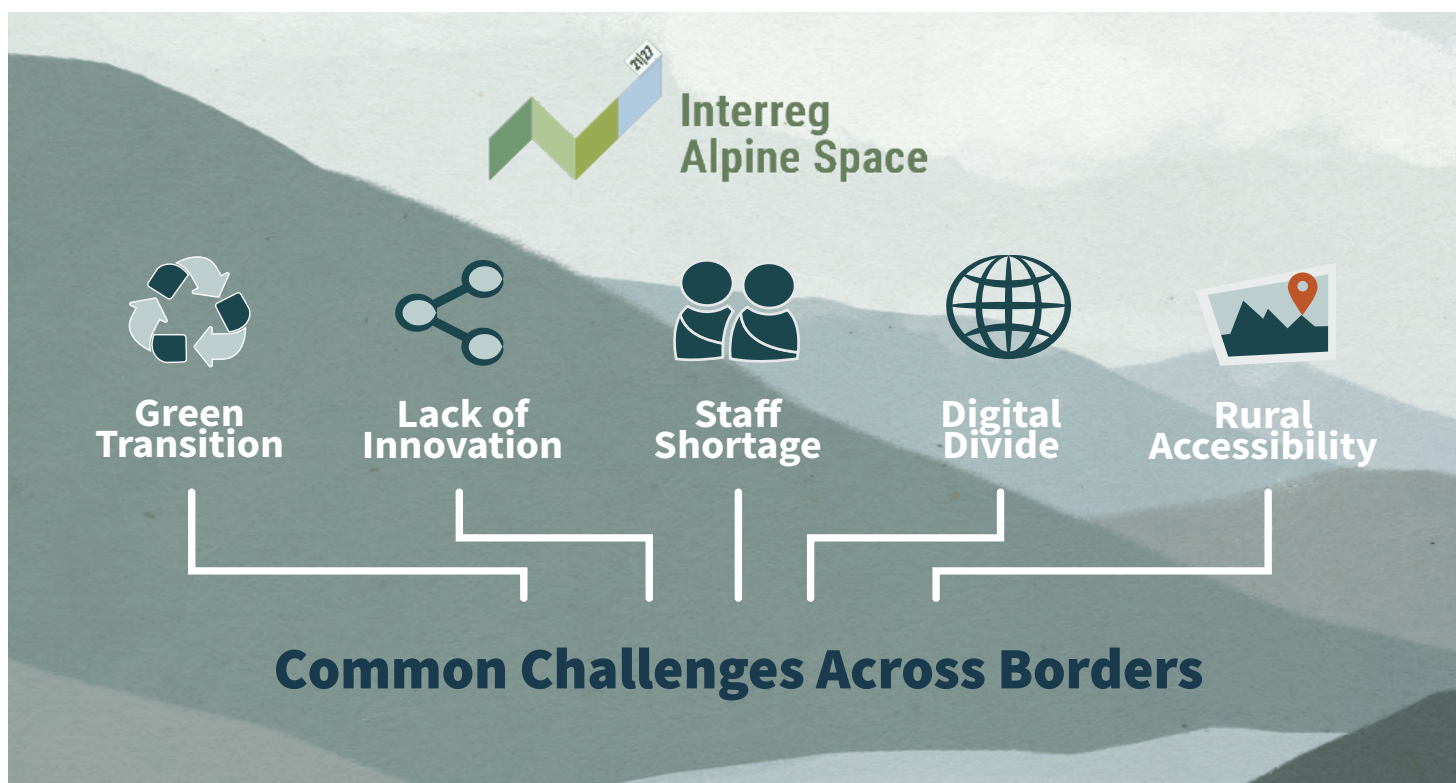
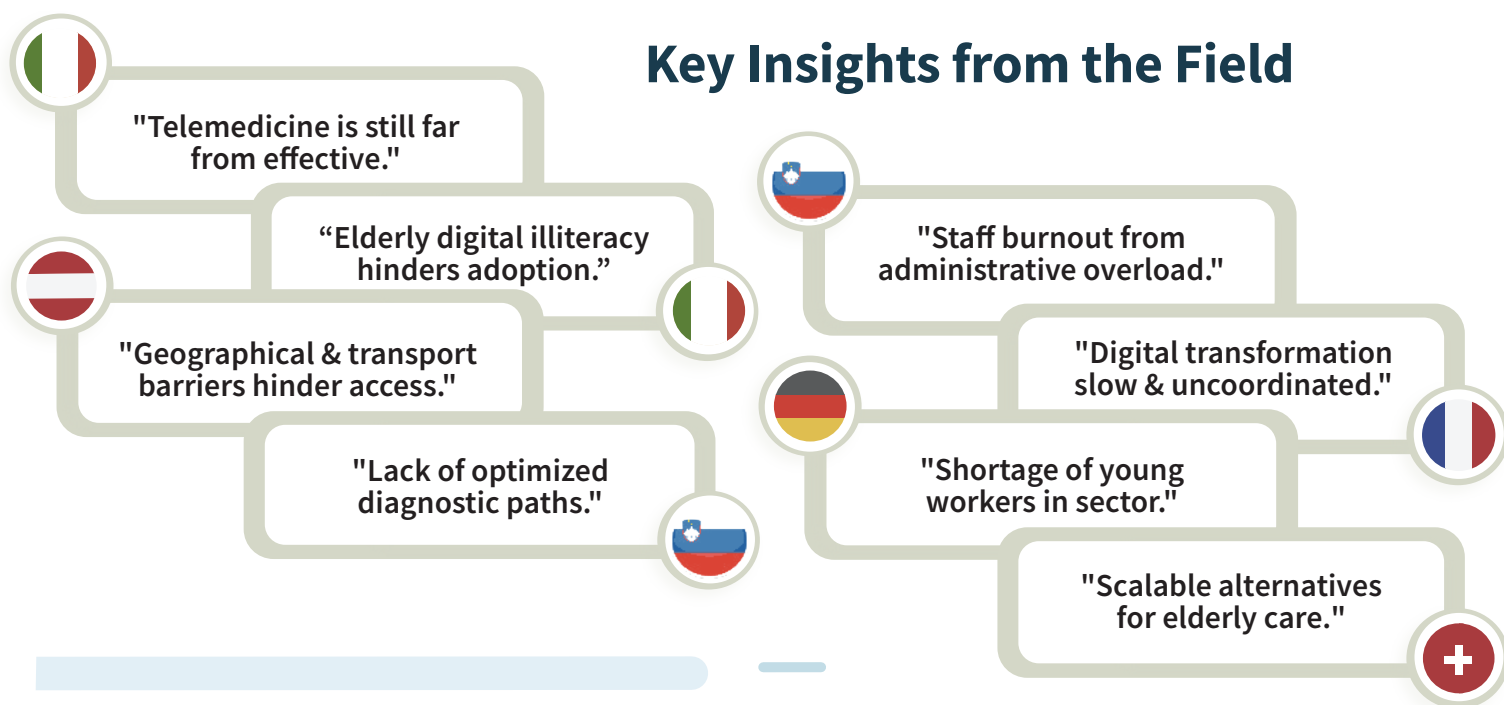


# Regional Voices in Health & Care: Emerging Critical Issues

HACK-IT-NET

Drawing on 101 interviews conducted by HACK-IT-NET across the Alpine regions, these are the key challenges reported by Health & Care Providers, Administrators, Policymakers, and Citizen/Patient Associations in Italy, Austria, Slovenia, France, Germany, Switzerland.

## Key Insights from the Field



## Most Pressing Issues



**Workforce shortages**



**Aging population**



**Waiting lists & inefficiencies**



**Digital & green transition**



**Territorial fragmentation**

Interreg Co-funded by the European Union

Alpine Space

HACK-IT-NET

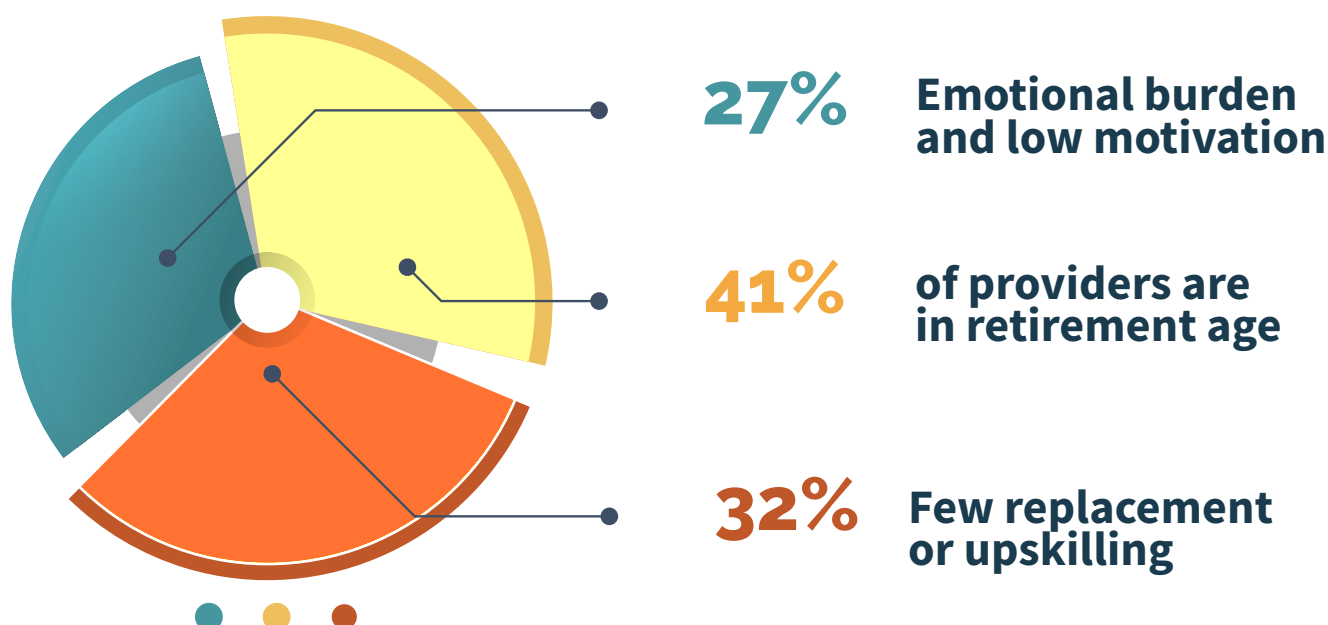
**Alpine healthcare systems** face growing pressure from staff shortages, an aging workforce, and burnout. Few young professionals enter the field, while many staff near retirement.

**Digital tools** are underused due to big infrastructure gaps, lack of training, and low digital literacy, especially in rural areas.

**The green transition** is largely missing from healthcare strategies despite its importance.

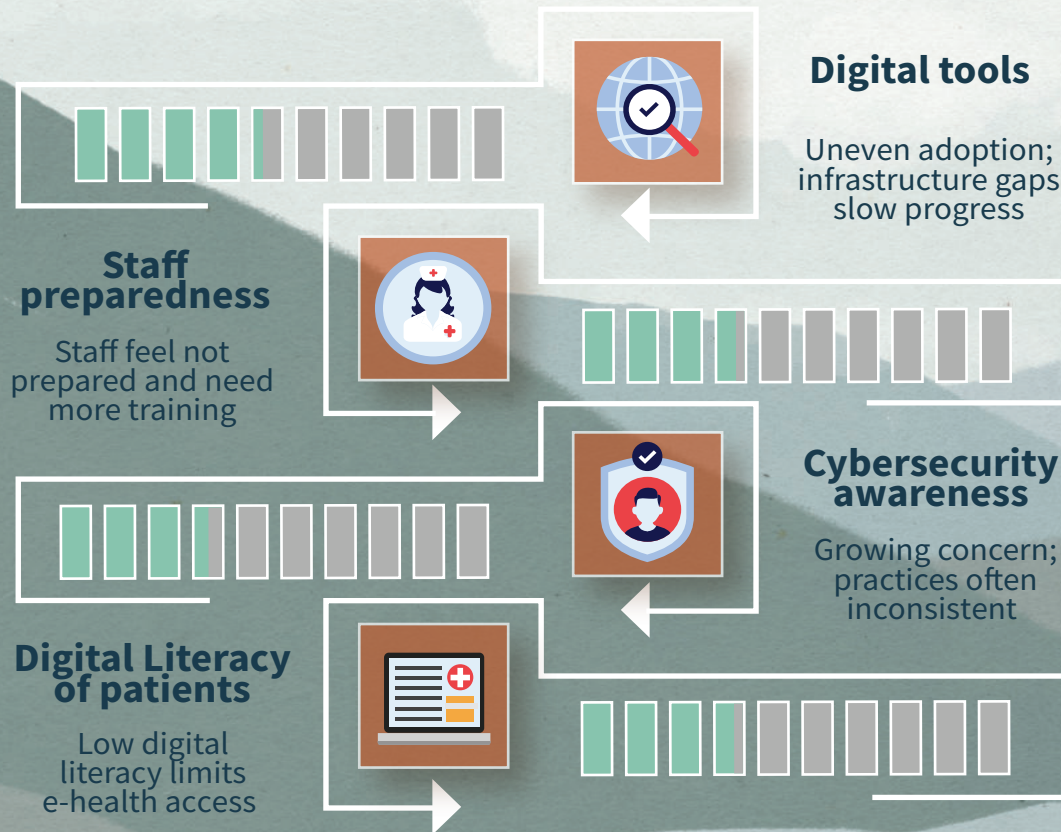
**It's time** to make Alpine health systems stronger, smarter, and greener for today and tomorrow.

## A System Under Strain: Health Workforce & Caregivers



# DIGITAL TOOLS:

## Expectations vs. Readiness



## What Keeps Health Providers Awake at Night?

Hospitals need to become more sustainable."

We lack interregional cooperation in digital tools."

AI is a big challenge for both, staff and patients."

Many elderly patients struggle to use digital platforms."

We are facing different transitions today, particularly the ecological transition."

## Insights Into Action: Key Demands for Change

- Personalized and participatory care
- Smarter, integrated systems
- Better education and preventive strategies
- Supportive digital tools
- Greener Healthcare Facilities

## Conclusions & Recommendations

### Key Cross-Cutting Findings



#### Workforce shortages

Staff shortages are worsened by the aging of the healthcare workers, with limited generational turnover and burnout levels



#### Digital health tools

Digital tools are available but adoption is uneven due to lack of training, cultural resistance, and weak policy coordination.



#### Rural area access

Rural areas still face major barriers to specialist and mental health services due to distance and limited local resources.



#### Sustainability & Green transition

The green transition is seen as important but remains marginal in health planning and budget allocation.



#### Citizens' engagement & Awareness

Citizen involvement is uneven and not systematically integrated into healthcare innovation processes.



#### Waiting Lists & Inefficiencies

Delays and administrative bottlenecks slow down access to care, leaving patients waiting too long for treatments and diagnostics.