

O.2.1 – Transnational multiple stakeholders, sector-based pilots aiming at implementing Cradle2Cradle transformative activities into industrial practice.

Tobias Schwarzmüller, Chemie-Cluster Bayern



"This project is co-funded by the European Union through the Interreg Alpine Space programme."

Interest in Cradle-ALP activities

Cradle-ALP



Chemistry

- Süd-West-Chemie
- Polytives
- CSC JÄKLECHEMIE
- Kemijski inštitut
- Belinka Perkemija
- MITOL
- Bloom Biorenewables
- ADLER-Werk Lackfabrick
- Neue Materialien Bayreuth
- Fraunhofer ICT
- HEIA-FR
- WKOÖ



Polymers

- FH Nordwestschweiz
- Institut für Kunststofftechnik
- GROSFILLEX
- DELFINGEN
- Lab'Stories
- Biofibre
- Polymaterials
- SILSEF
- ADEME
- Fraunhofer ICT
- Delfingen
- Realcycle
- Hutchinson
- Composite Recycling



Packaging

- Danfoss Power Solutions
- Pulp and Paper Institute
- Roto ECO
- Fibran
- BOKU
- Jamnik
- Kering Eyewear
- CARLO SESSA
- EcoLoop
- Waypoint



Textiles

- Saubermacher
- Chamber of Commerce
Upper Austria
- Climate Lab
- Löffler
- TURNS
- Chamber of Commerce and
Industry of Slovenia
- GZS
- Association Techtera
- Linz AG
- Saint-Gobain Research Paris
- RECENDT



Wood

- Waypoint-light
- Eointelligentgrowth
- T2i
- Buzzoni
- open innovation
- AP2T
- BOKU
- Hali
- Uni Padova
- Pavanello Serramenti
- Matech

> 60 organisations participated in roadmapping workshops and showed interest in Cradle-ALP topics:

circularity, sustainability, cradle 2 cradle

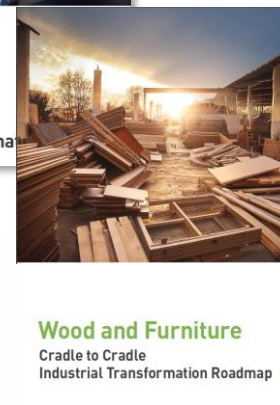
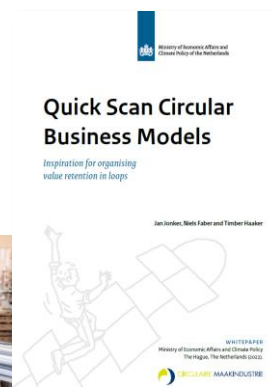
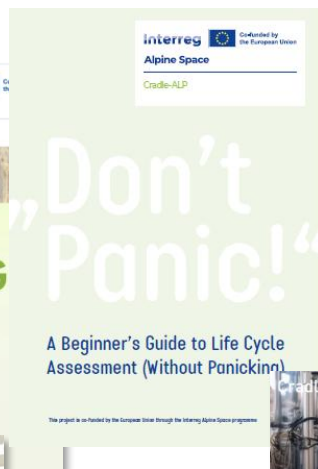
→ Good starting point for pilot activities offering individual and collective support

"This project is co-funded by the European Union through the Interreg Alpine Space programme."



Cradle-ALP support offers

Cradle-ALP



Individual Support



SBMC



QuickScan



Circularity Compass



Value Chain Generator

Collective Activities



LCA/LSP workshops



Match making/Visit



Direct matching



Joint booth

"This project is co-funded by the European Union through the Interreg Alpine Space programme."



Individual support & collective activities

Project partner	Name of organization	# of SMEs assisted
LP1	CCIAA Padova	20
PP2	TZ Horb	9
PP3	CCB	21
PP4	BOKU	-
PP5	Biz-Up	24
PP6	UniSMART	16
PP7	CCIS	14
PP8	Polymeris	24
PP9	HEIA-FR	5
Total		133

- **A total of 133 SMEs** were supported by Cradle-ALP project partners
- Another **96 organizations** benefited from workshops and knowledge transfer offered in the partner regions
- **130 companies** participated in cross-border online and on-site match making events.

"This project is co-funded by the European Union through the Interreg Alpine Space programme."



Match Making events as successful tool

#	Match Making Event	Type	# registered/ participated	# bilateral meetings
1	Polymers/Composites & Chemistry	online	73 / 56	27
2	Packaging, plastics, recycling	onsite	97 / >40	49
3	Wood/Furniture	online	42 / >30	4
4	Packaging	online	18 / 19	5

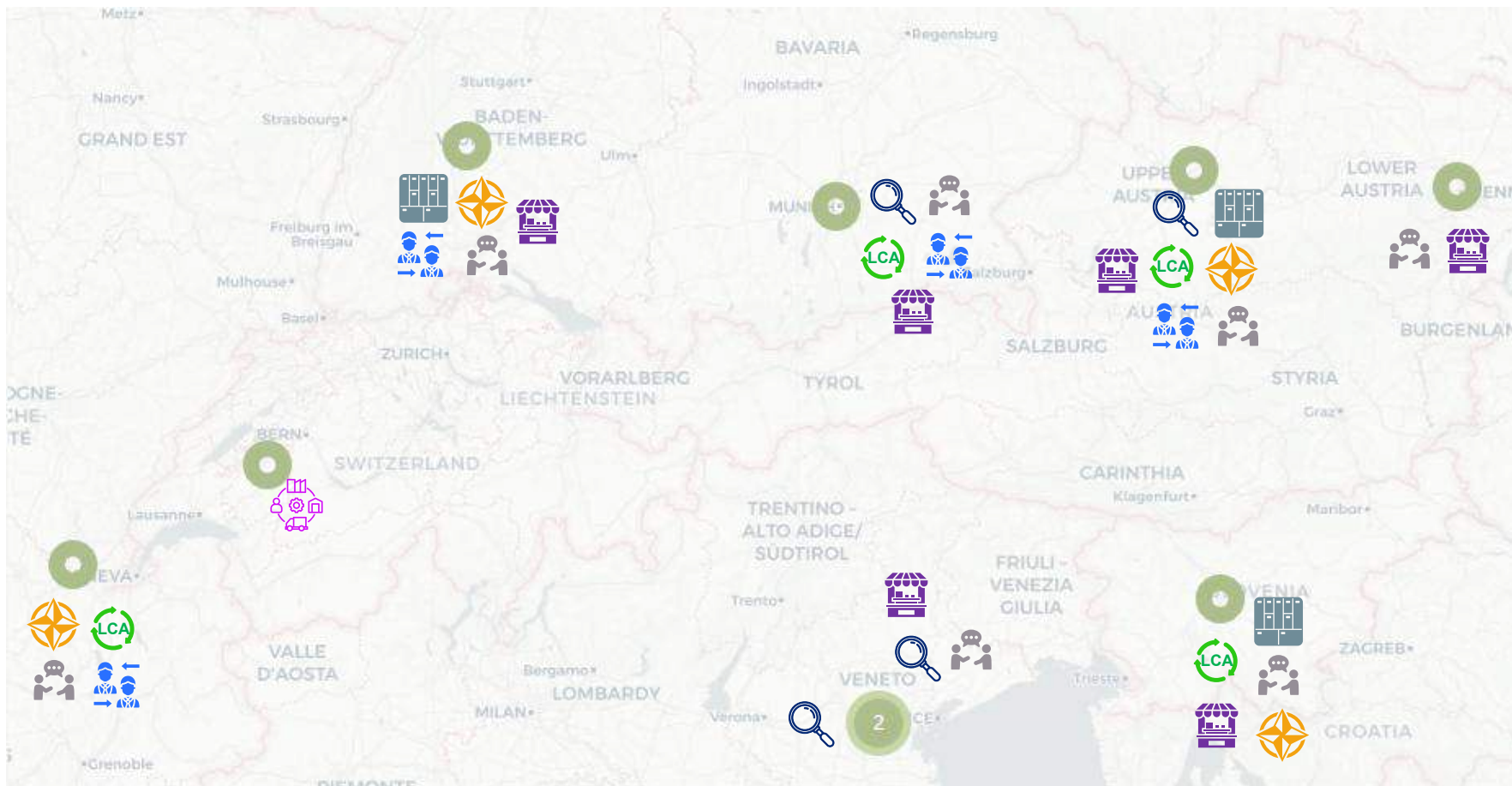
- Major challenge: intensification of cross-border exchange & collaborations
- Solution → Find and apply a format to personally/directly connect SMEs with putative R&D or business partners



"This project is co-funded by the European Union through the Interreg Alpine Space programme."

Overview: tools applied by project partners

Cradle-ALP



Individual Support



SBMC



QuickScan



Circularity Compass



Value Chain Generator

Collective Activities



LCA/LSP workshops



Match making/Visit



Direct matching



Joint booth

"This project is co-funded by the European Union through the Interreg Alpine Space programme."



Direct Matching – Grüne Erde & Rottal Hanf

Cradle-ALP



- Initiation of direct contact
- Regional collaboration

"This project is co-funded by the European Union through the Interreg Alpine Space programme."

Direct Matching – Grüne Erde & Rottal Hanf

Cradle-ALP



ROTTAL
HANF®

100% Nutzung der Pflanze



Grüne  Erde



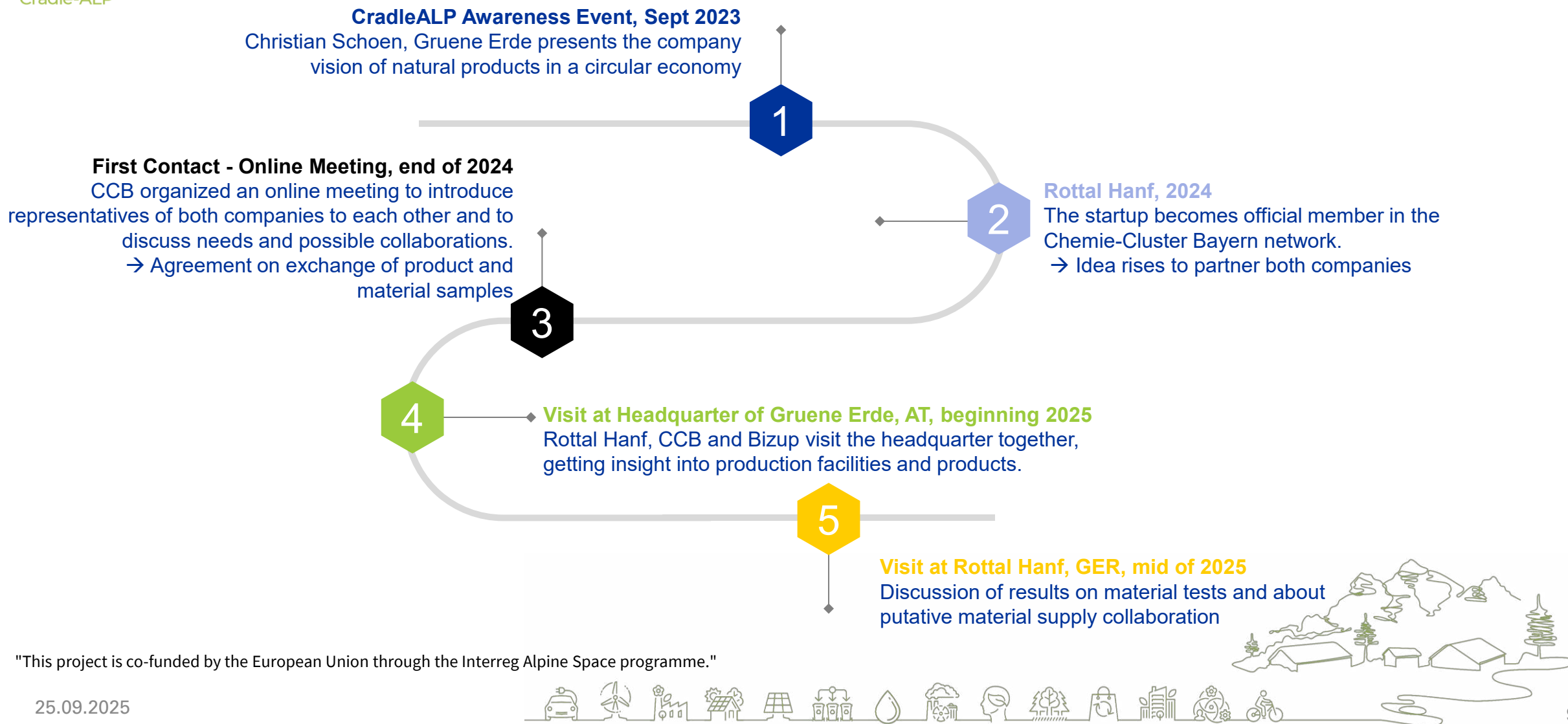
- Bavarian startup
- Hemp & hemp fibers: supply, processing, application development, recycling
- Interest in regional partners and projects in construction, textile, furniture, cosmetics and circular economy

- Upper Austrian Furniture Company
- Ecopioneer, since 1983 on the market
- Products mainly made from renewable resources produced in a sustainable, ecologically and socially fair way
- Looking for regional partners to deliver renewable resources

"This project is co-funded by the European Union through the Interreg Alpine Space programme."



Direct Matching – Grüne Erde & Rottal Hanf



Success – Agreement on supply collaboration



"This project is co-funded by the European Union through the Interreg Alpine Space programme."

