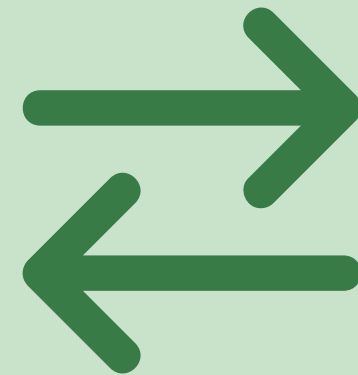


- Resource Efficient and Cleaner Production (RECP)
- Low-carbon technology
- Green chemistry
- Renewable energy
- Energy efficiency

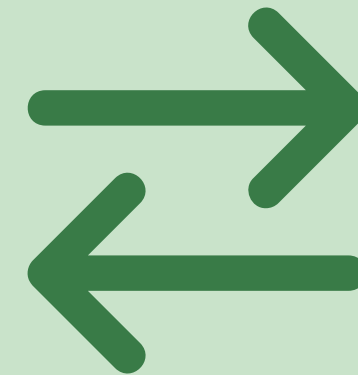
**Company**



**Collective resource efficiency solutions and shared:**

- Resources
- Infrastructure
- Supply
- Services

**Industrial Park**



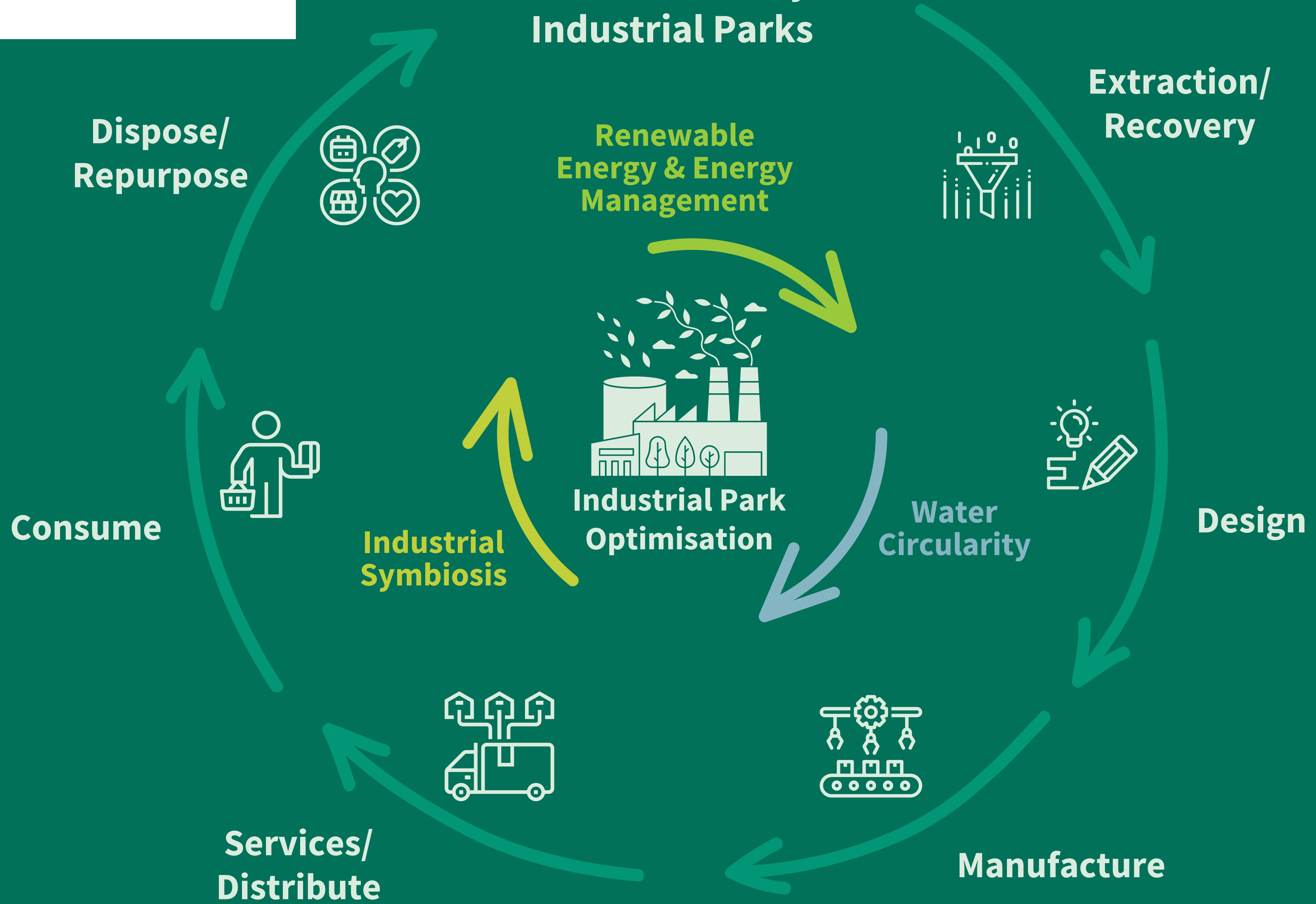
**Sustainable symbiosis:**

- Waste Management
- Recycling
- Corporate social responsibility

**Sustainable Cities**



# Circular Economy & Industrial Parks





# Compliance with national and local regulations, and fundamental international rights

## Park Management Performance

- Park management entity
- Park property, common infrastructure and services
- Monitoring performance and risks
- Climate risk assessment
- Information on applicable regulations and standards
- Planning and park design

## Environmental Performance

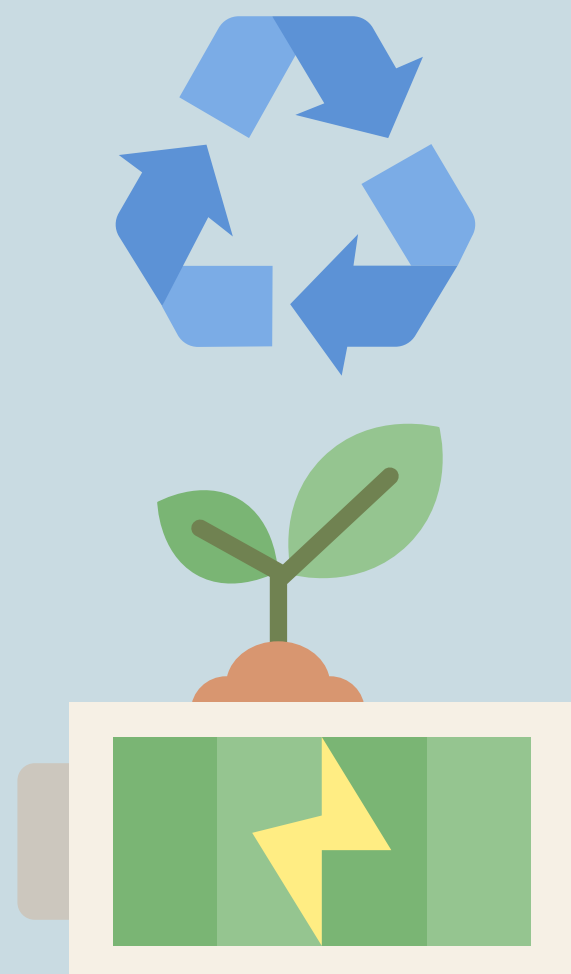
- Environmental and energy monitoring systems
- Energy efficiency
- Renewable and clean energy
- Energy network and waste heat recovery
- Water efficiency, reuse and recycling
- Dangerous and toxic material
- Resource conservation
- Treatment and disposal of waste
- Air, GHG emissions and pollution prevention
- Environmental assessment and ecosystem services

## Social Performance

- Management team
- Primary social infrastructure: gender equality, facilities, services and networks that support wellbeing and quality of life

## Economic Performance

- SME development
- Maximizing local benefits
- Market demand for EIP services and infrastructure
- Service delivery pricing



# Dual application of CE principles in:



## Single enterprises action area

some non-exhaustive examples:

Renewable energy supply, renewable thermal supply, hazardous waste

Circular packaging, LCA studies

Product innovation, process innovation and digital innovation

Water recovery, destination of waste, water recovery, circular design

Employee incentives on regeneration, circular skills, internal training

## EIP action area

some non-exhaustive examples:

Rate of achievement of energy targets, water targets and waste reduction targets

Circular strategy, natural capital pressure studies

Joining Innovation Network and land monitoring systems

Energetic symbiosis, water recovery, destination of waste

Supply chain management systems, industrial symbiosis, joining a network

Participation in regeneration projects, regenerative cultivation

Well-being local communities, local suppliers

Reduce

Rethink

Innovate

Revalue

Collaborate

Regenerate

Inclusiveness



# Strategies and principles of the CE: the Rs' strategies



**Smarter  
product use  
and  
manufacture**

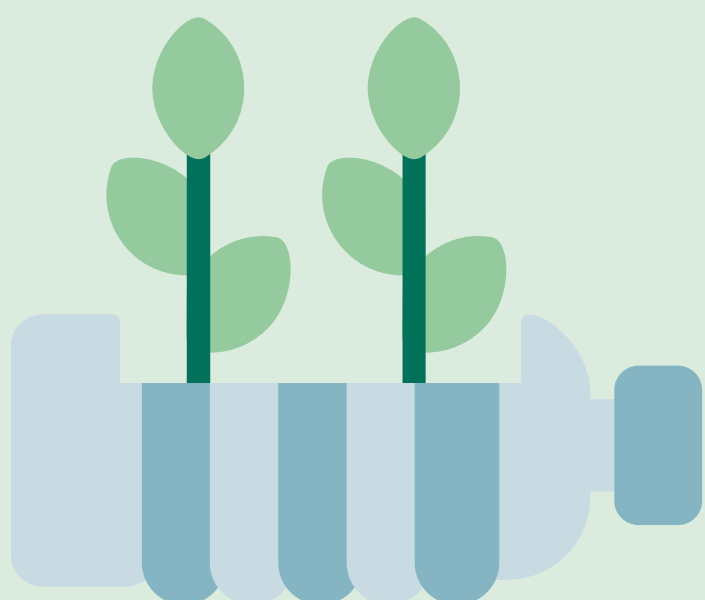
Refuse  
Rethink  
Reduce

Re-use  
Refurbish  
Repair  
Repurpose  
Re-  
manufacture

**Extend lifespan  
of product and  
its parts**

**Useful  
application of  
materials**

Recycle  
Recover



**Interreg**  
**Alpine Space**



Co-funded by  
the European Union

ECOLE

# Circular economy

